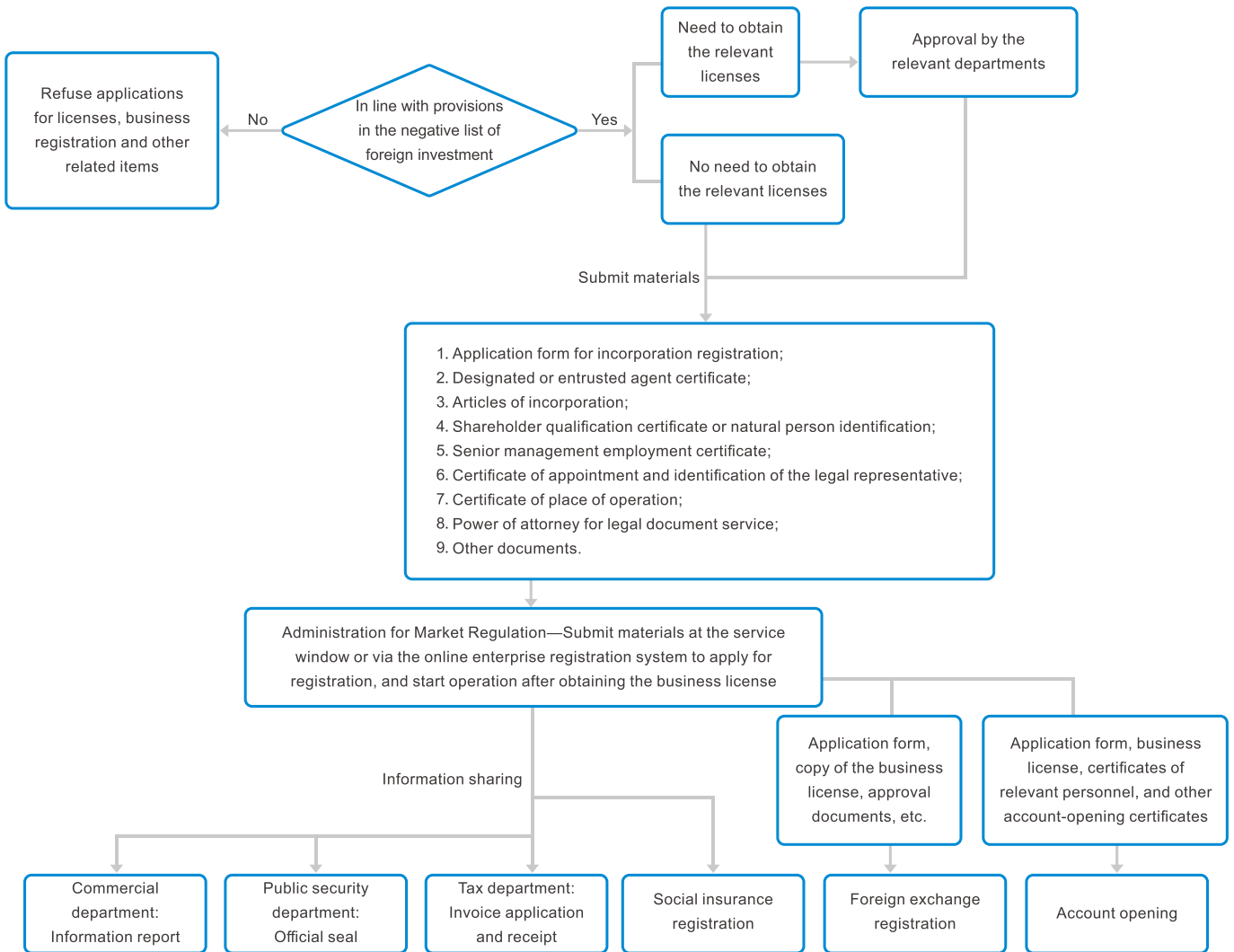


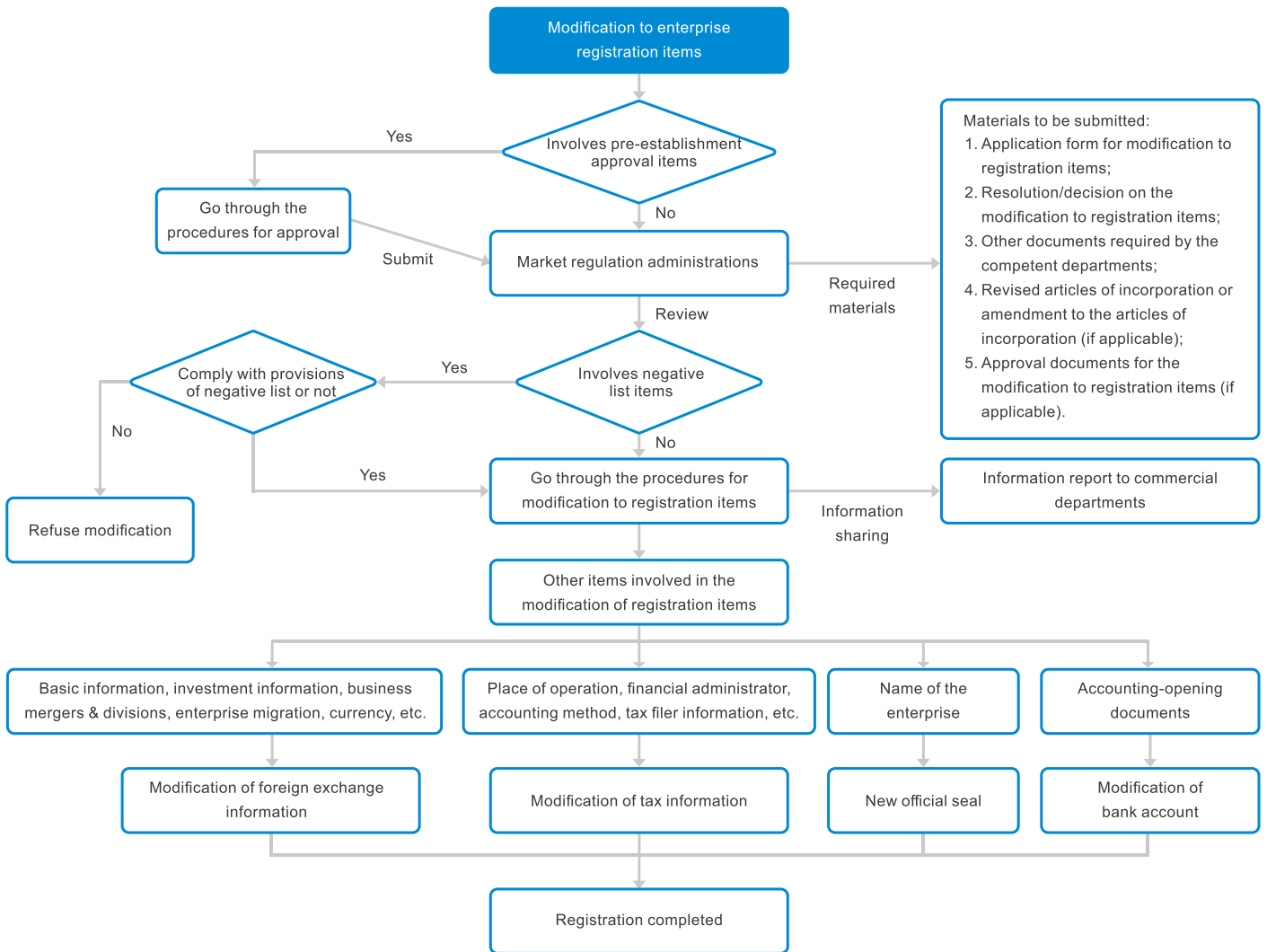
Enterprise Incorporation/Modification

Enterprise Incorporation



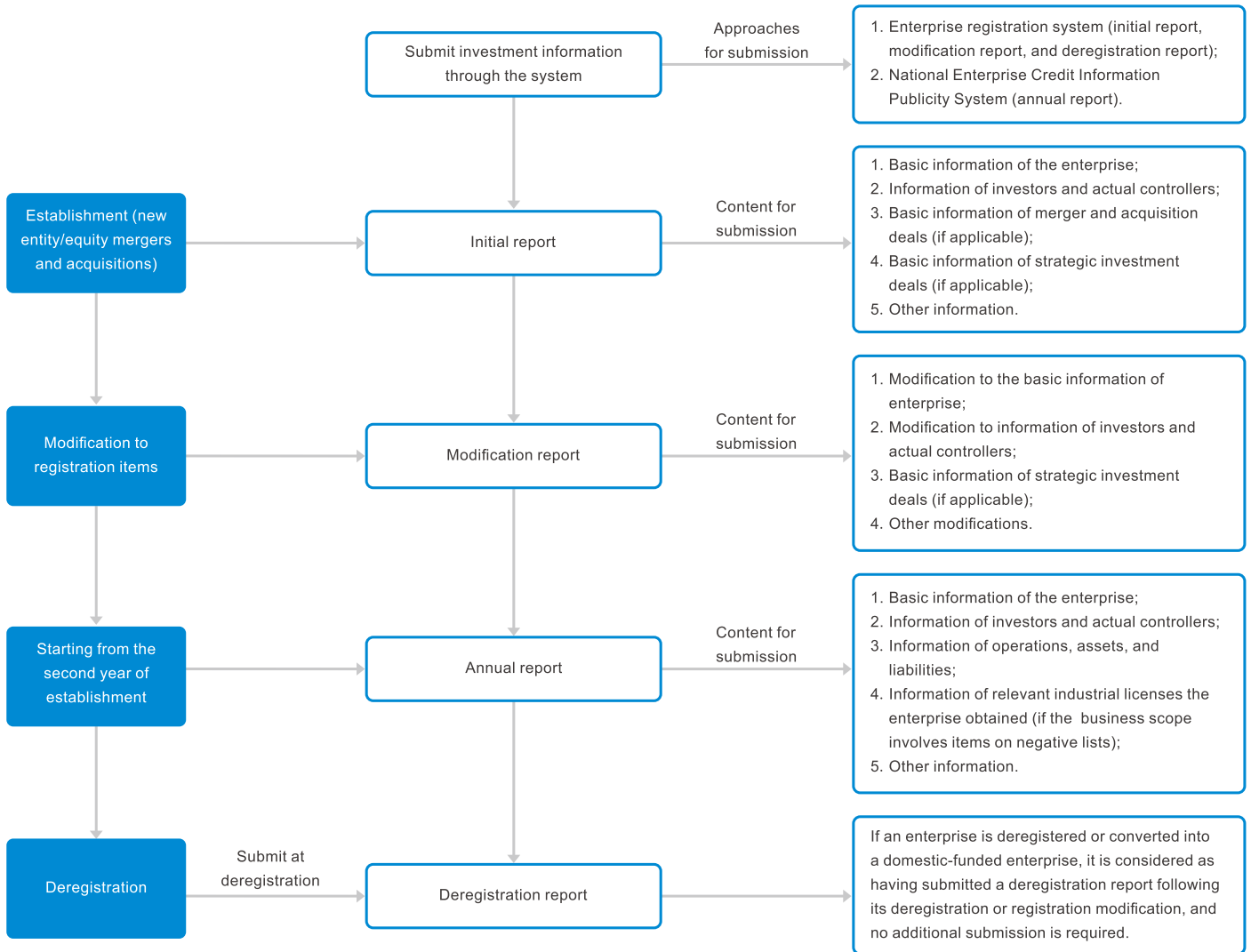
Enterprise Incorporation/Modification

Enterprise Modification

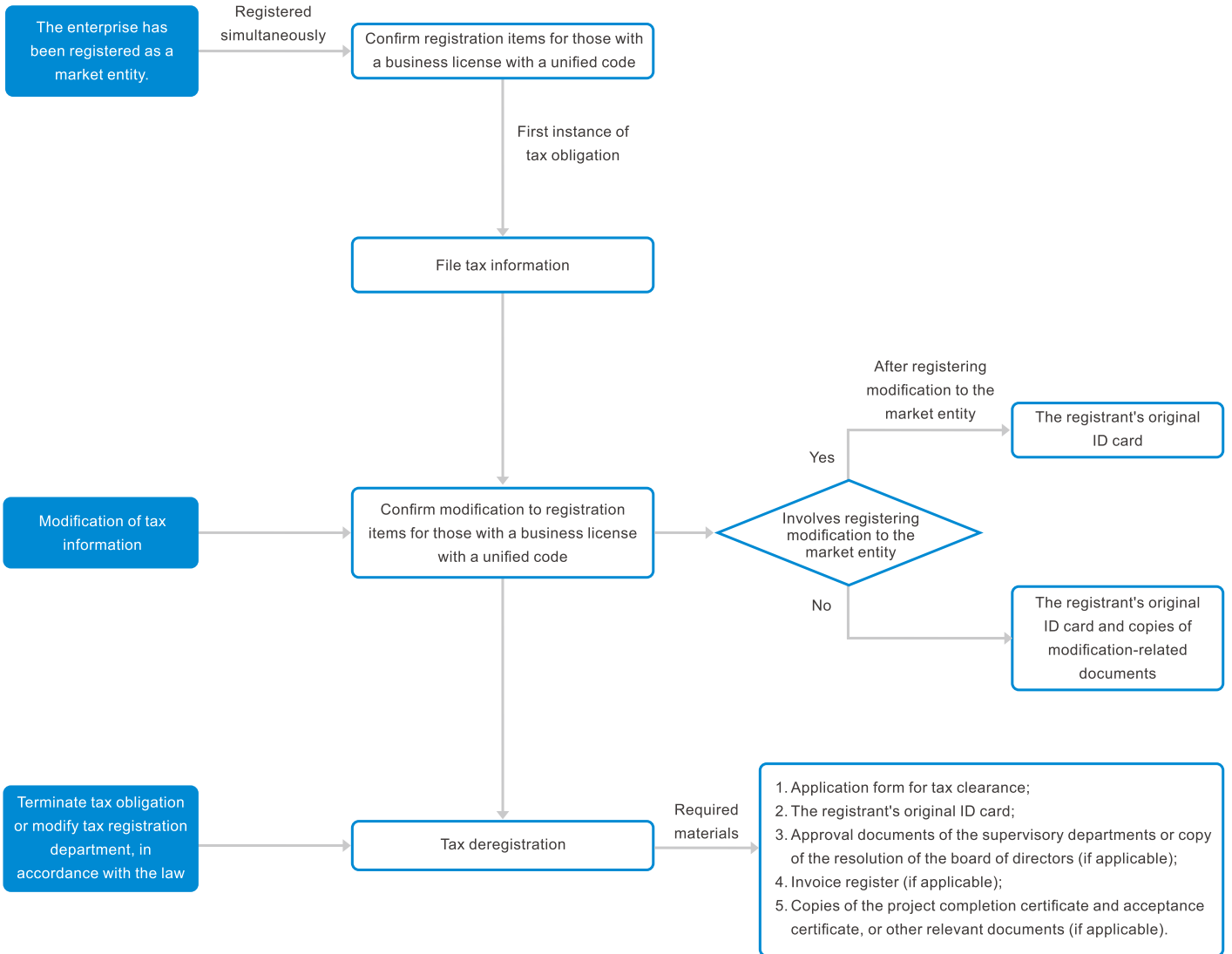


Enterprise Incorporation/Modification

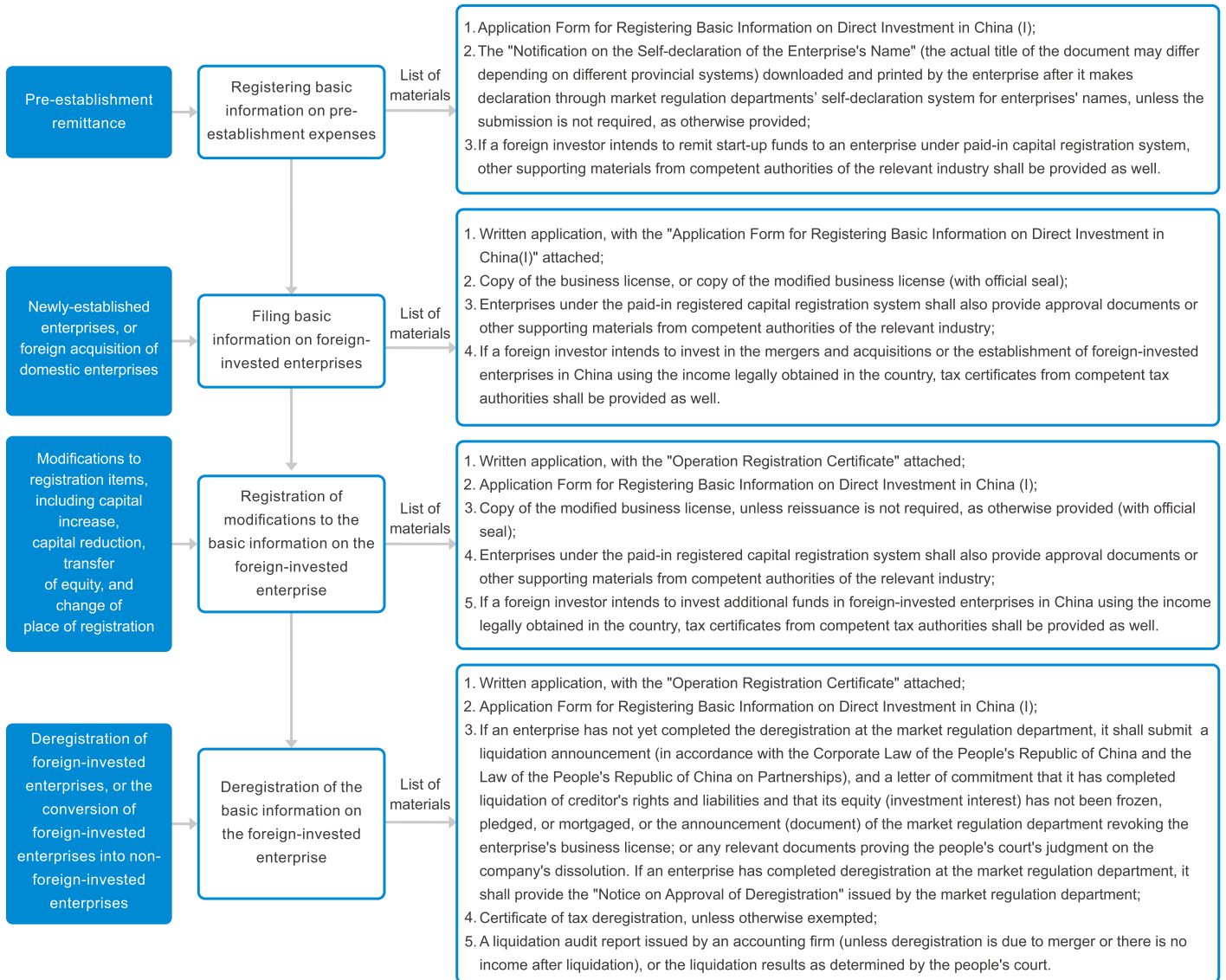
Enterprise Information Report



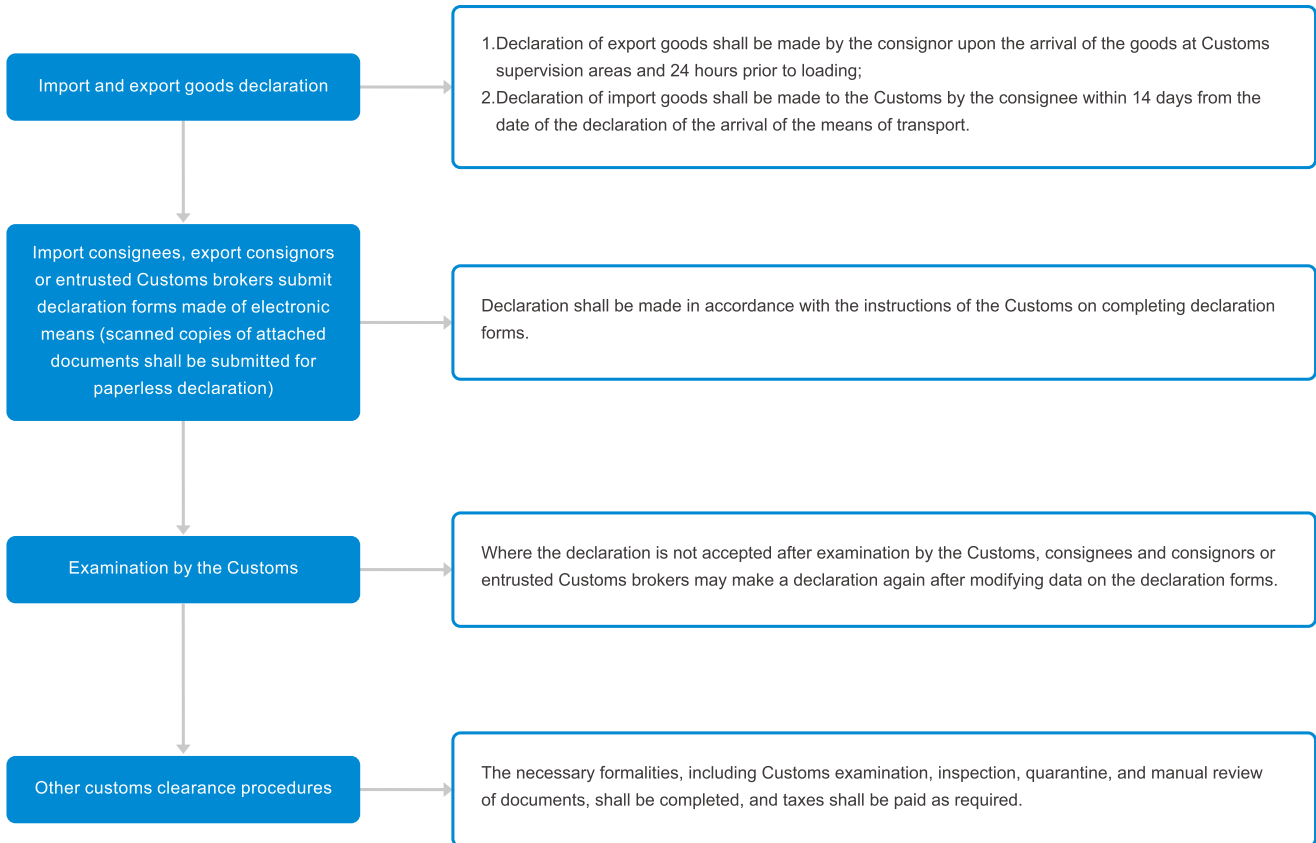
Taxation



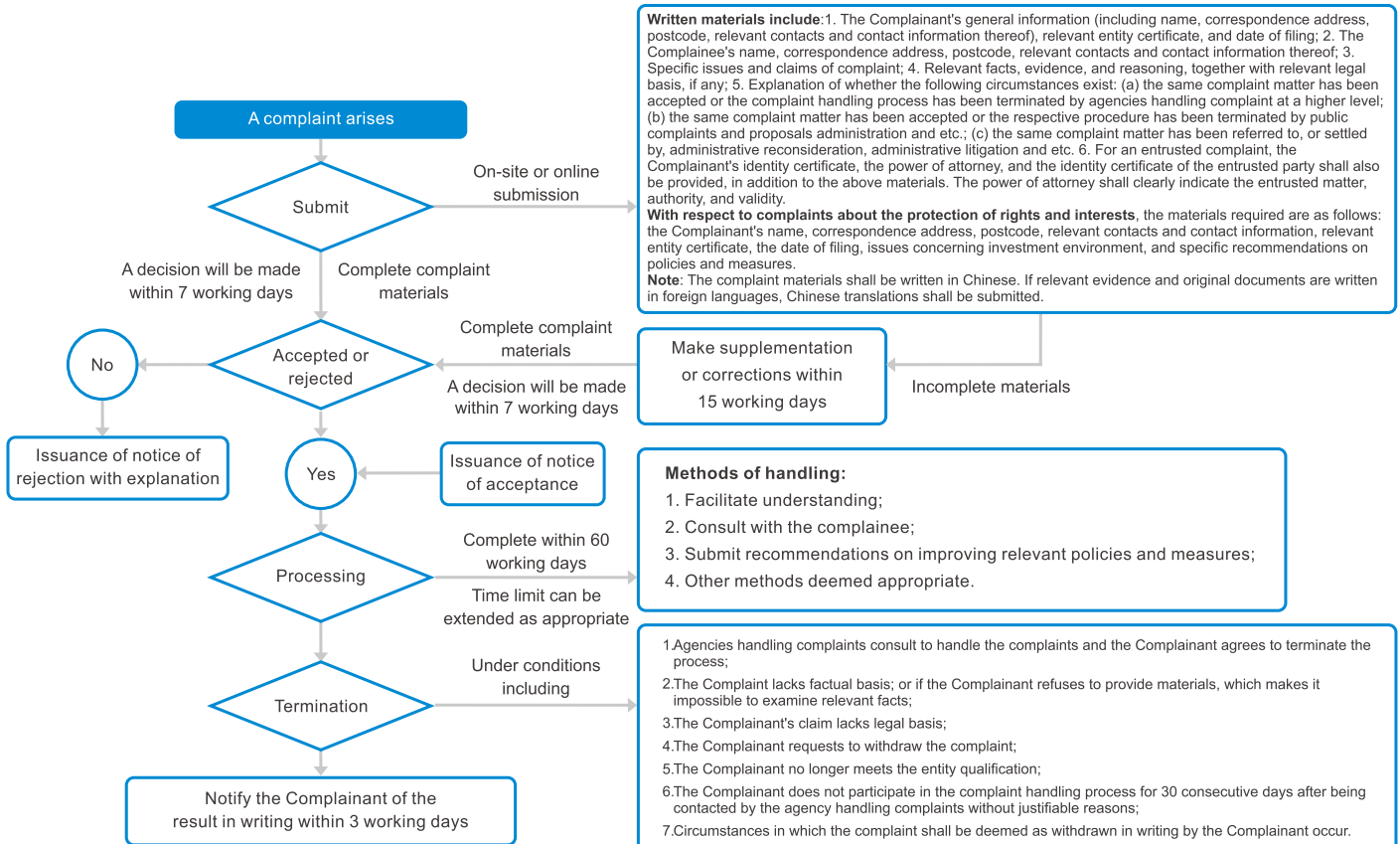
Foreign Exchange



Customs



Complaint Management for Foreign-invested Enterprises



Notes:
 This procedure is based on the Rules on Handling Complaints of Foreign-Invested Enterprises.

- "The complainant"** refers to foreign-invested enterprises and foreign investors.
- "Complaints"** include:
 - The Complainant alleges that their legitimate rights and interests have been infringed upon by the administrative actions of administrative bodies and their staff members;
 - The Complainant reports issues concerning the investment environment and suggests improvements of relevant policies and measures to agencies handling complaints.**The complaints do not include** applications of the Complainant for coordination to settle civil and commercial disputes with other natural persons, legal persons, or other organizations.
- "Agencies Handling Complaints"** include:
 - The National Center for Complaints of Foreign-Invested Enterprises;
 - Departments or institutions designated by local people's governments at and above the county level that are responsible for accepting complaints of foreign-funded enterprises.