

中国外资统计公报

STATISTICAL BULLETIN OF FDI IN CHINA

2018



INvest in China

中华人民共和国商务部

MINISTRY OF COMMERCE OF THE PEOPLE'S REPUBLIC OF CHINA

目 录

一、2017 年中国外商投资综述	1
二、外商投资经济运行情况	3
(一) 规模以上外商投资企业工业增加值情况	3
(二) 实际使用外资金额占固定资产投资情况	3
(三) 税收情况	4
(四) 进出口情况	4
三、外商投资来源分布	6
(一) 对华投资前 15 位国家/地区投资情况	6
(二) 主要对华投资国家/地区投资情况	7
(三) 香港地区投资情况	8
(四) 台湾地区投资情况	9
(五) 日本投资情况	10
(六) 新加坡投资情况	11
(七) 韩国投资情况	12
(八) 美国投资情况	13
(九) 欧盟投资情况	14
(十) 东盟投资情况	15
(十一) 金砖国家投资情况	16
(十二) “一带一路” 沿线国家投资情况	17
四、外商投资结构分布	19
(一) 外商直接投资方式	19
(二) 外商直接投资产业	19
(三) 东、中、西部地区外商直接投资情况	21
五、全球外商直接投资情况	22
(一) 全球 FDI 流动情况	22

(二) 全球 FDI 流入量前 10 位国家/地区	22
(三) 全球 FDI 流出量前 10 位国家/地区	23
(四) 世界各区域 FDI 流入情况	24
(五) 世界各区域 FDI 流出情况	24
(六) 主要对华投资国家 FDI 流出情况	25
(七) “一带一路”沿线国家 FDI 流动情况	25
(八) “金砖国家” FDI 流动情况	27
(九) 发展中国家 FDI 流动情况	28
附表:	29
附表 1 截至 2017 年外商直接投资情况	29
附表 2 全国工业增加值及规模以上外商投资企业工业增加值增幅表	30
附表 3 1992-2017 年实际使用外资占全社会固定资产投资情况表	31
附表 4 1992-2017 年外商投资企业税收统计 (不包括关税和土地费)	32
附表 5 2017 年外商投资企业进出口商品总值统计	33
附表 6 1986-2017 年外商投资企业进出口商品总值统计	34
附表 7 截至 2017 年对华投资前十五位国家/地区情况	35
附表 8 2017 年部分国家/地区对华直接投资情况	36
附表 9 截至 2017 年部分国家/地区对华直接投资情况	37
附表 10 1987-2017 年香港地区投资情况一览	38
附表 11 1990-2017 年台湾地区投资情况一览	39
附表 12 1987-2017 年日本投资情况一览	40
附表 13 1987-2017 年新加坡投资情况一览	41
附表 14 1992-2017 年韩国投资情况一览	42
附表 15 1987-2017 年美国投资情况一览	43
附表 16 1987-2017 年欧洲联盟投资情况一览	44
附表 17 1987-2017 东盟投资情况一览	45
附表 18 2010-2017 金砖国家投资情况一览	46
附表 19 2013-2017 “一带一路”沿线国家投资情况一览	46
附表 20 2017 年外商直接投资主要行业参考数据	47
附表 21 2017 年全球对外投资前 5 位国家/地区及欧盟、东盟在华投资情况对比表	49
附表 22 2017 年 “一带一路”沿线国家 FDI 流动情况	50

图目录

图 1	1979-2017 年中国实际使用外资情况	1
图 2	2017 年对华投资前 15 位国家/地区情况	2
图 3	2017 年外商投资企业工业增加值增幅情况	3
图 4	1992-2017 年实际使用外资金额占固定资产投资比重情况	4
图 5	1997-2017 年外商投资企业税收情况	4
图 6	1986-2017 年外商投资企业进出口总值占比情况	5
图 7	截至 2017 年 12 月对华投资前十五位国家/地区情况	7
图 8	2017 年投资企业来源地区概况	7
图 9	2017 年实际投入外资金额来源地区概况	8
图 10	1987-2017 年香港地区投资情况	8
图 11	1990-2017 年台湾地区投资情况	9
图 12	1987-2017 年日本对华投资情况	10
图 13	1987-2017 年新加坡对华投资情况	11
图 14	1992-2017 年韩国对华投资情况	12
图 15	1987-2017 年美国对华投资情况	13
图 16	1987-2017 年欧盟对华投资情况	14
图 17	1987-2017 年东盟对华投资情况	15
图 18	2010-2017 年金砖国家对华投资情况	16
图 19	2013-2017 年“一带一路”沿线国家对华投资情况	17
图 20	2017 外商直接投资行业结构概况	20
图 21	2004—2017 年全球跨国直接投资情况	22
图 22	2017 年“一带一路”沿线国家 FDI 流入情况	26
图 23	2017 年“一带一路”沿线国家 FDI 流出情况	27

表目录

表 1	2017 年外商直接投资分方式统计	2
表 2	2017 年对华投资前 15 位国家/地区情况	6
表 3	2017 香港地区投资前 5 位行业	9
表 4	2017 台湾地区投资前 5 位行业	10
表 5	2017 日本外商直接投资前 5 位行业	11
表 6	2017 新加坡外商直接投资前 5 位行业	12
表 7	2017 韩国外商直接投资前 5 位行业	13
表 8	2017 美国外商直接投资前 5 位行业	14
表 9	2017 欧盟外商直接投资前 5 位行业	15
表 10	2017 东盟外商直接投资前 5 位行业	16
表 11	2017 金砖国家外商直接投资前 5 位行业	17
表 12	2017 “一带一路” 沿线国家外商直接投资前 5 位行业	18
表 13	截至 2017 年 12 月外商直接投资分方式统计	19
表 14	2017 年外商直接投资产业结构	19
表 15	2017 年外商直接投资高技术产业情况	20
表 16	2017 年东部、中部、西部地区外商直接投资情况	21
表 17	2017 年全球 FDI 流入量前 10 位国家/地区一览	23
表 18	2017 年全球 FDI 流出量前 10 位国家/地区一览	23
表 19	2017 年世界各区域 FDI 流入情况	24
表 20	2017 年世界各区域 FDI 流出情况	24
表 21	2017 年对华投资前 10 位国家/地区 FDI 流出对比表	25
表 22	2017 年“金砖国家” FDI 流动情况	28
表 23	2017 年发展中国家的 FDI 流动情况	28

2017年，中国政府积极营造更加公平透明便利、更有吸引力的投资环境，优化区域开放布局，利用外资实现平稳增长，质量和水平进一步提高。

在全球FDI同比下降23.4%的情况下，我国利用外资逆势上涨，全国新设立外商投资企业35662家，同比增长27.8%；实际使用外资达1363.2亿美元，同比增长2%，创历史新高。吸收外资持续稳中向好的态势将为推动中国经济高质量发展作出新贡献。

一、2017年中国外商投资综述

2017年，中国实际使用外资金额1363.2亿美元，较2016年增加2.0%。截至2017年12月，累积实际使用外资金额突破2万亿美元，达20109.3亿美元^①。

2017年，中国新设立外商投资企业35662家，较2016年增加27.8%；截至2017年12月，累积设立外商投资企业900165家。（详见附表1）

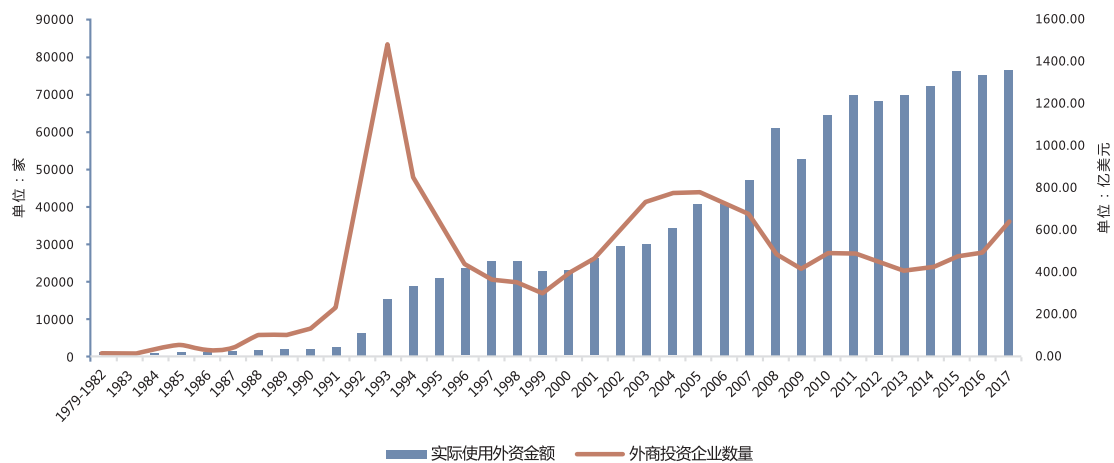


图1 1979-2017年中国实际使用外资情况

数据来源：商务部外资统计

2017年，对华投资前15位国家/地区实际投入外资金额1257.0亿美元，占当年全部实际投入外资金额比重92.2%，新设企业数27637家，占当年全部新设企业数77.5%。（详见附表7）

^① 实际使用外资金额，是指合同外资金额的实际执行数，外方投资者根据外商投资企业的合同（章程）的规定实际缴付的出资额。

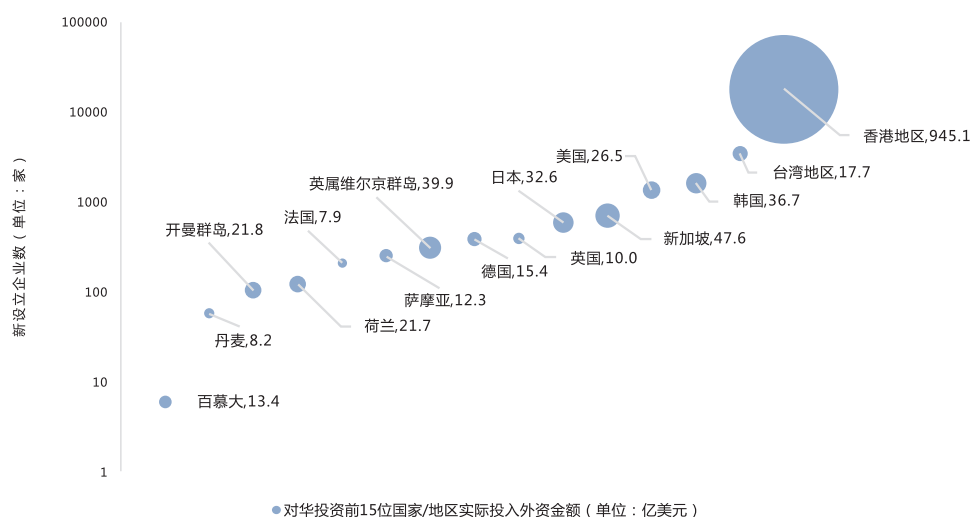


图 2 2017 年对华投资前 15 位国家/地区情况

数据来源: 商务部外资统计

2017 年, 外商直接投资方式以外资企业为主, 新设立 27007 家, 占比 75.7%, 实际使用外资金额 913.4 亿美元, 占比 67.0%; 其次是中外合资企业, 新设立 8364 家, 占比 23.5%, 实际使用外资金额 297.4 亿美元, 占比 21.8%。

表 1 2017 年外商直接投资分方式统计

金额单位: 亿美元

方 式	企业数		实际使用外资金额	
	数量	比重%	金额	比重%
总计	35662	100	1363.2	100
中外合资企业	8364	23.5	297.4	21.8
中外合作企业	124	0.4	8.1	0.6
外资企业	27007	75.7	913.4	67.0
股份有限公司	125	0.4	64.8	4.8
其它	42	0.1	79.5	5.8

注: 其他外商投资企业包括合伙企业和合作开发项目等。

数据来源: 商务部外资统计

2017 年, 中国在全球吸引外资国家/地区中排名第二, 吸引外资 1363.2 亿美元, 同比上升 2.0%, 占全球吸引外资总量的 9.5%。

二、外商投资经济运行情况

（一）规模以上外商投资企业工业增加值情况

2017年，外商投资经济体运行情况仍然保持良好态势。全国工业增加值增幅6.4%，规模以上外商投资企业工业增加值增幅6.6%，高于全国水平。1992-2017年，全国工业增加值平均增幅为11.1%，而规模以上外商投资企业工业增加值平均增幅达到了15.0%。（详见附表2）

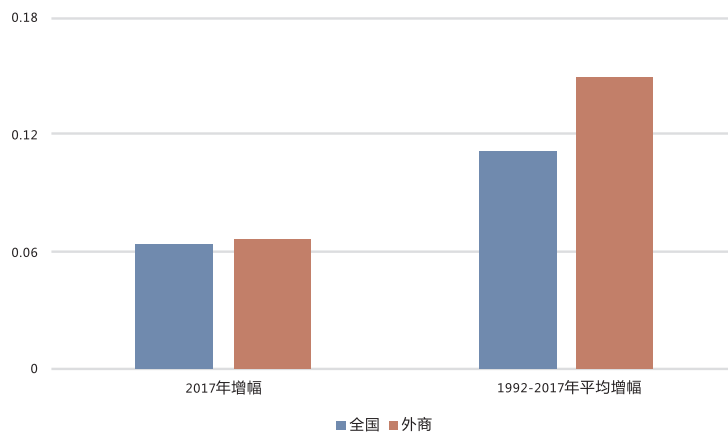


图3 2017年外商投资企业工业增加值增幅情况

数据来源：各年度《国民经济和社会发展统计公报》，按可比价格计算。

（二）实际使用外资金额占固定资产投资情况

2017年，全社会固定资产投资94972.9亿美元，实际使用外资金额占全社会固定资产投资比重为1.4%。（详见附表3）

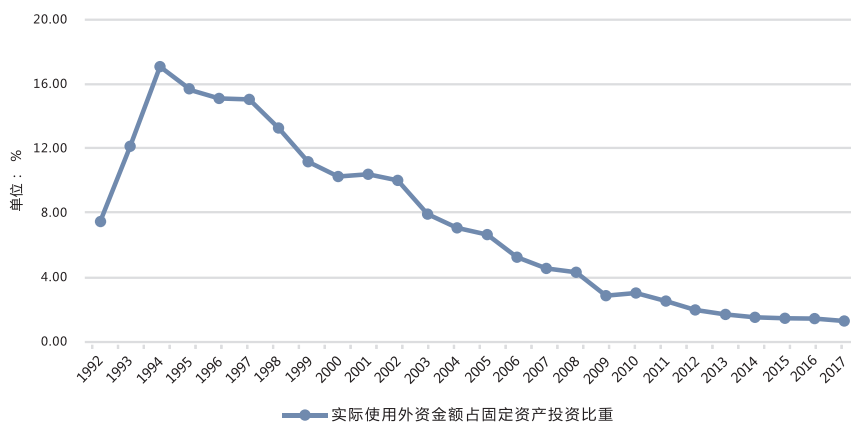


图4 1992-2017年实际使用外资金额占固定资产投资比重情况

数据来源：《中国统计年鉴》

（三）税收情况

2017年，全国税收收入为155739.3亿元，增幅为10.8%，其中外商投资企业税收总额为29185.1亿元，增幅13.7%，占全国税收收入的18.7%。1992-2017年外商投资企业税收总额占全国税收收入比重平均达18.1%。（详见附表4）

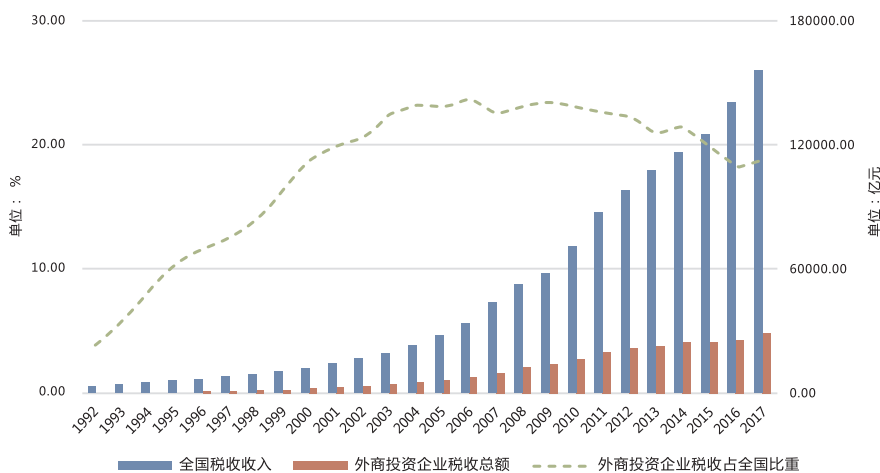


图5 1997-2017年外商投资企业税收情况

数据来源：历年《中国统计年鉴》、国家税务总局。

（四）进出口情况

2017年，全国进出口商品总值达41045.0亿美元，同比增加11.4%，其中外商投资企业进出口商品总

值 18391.4 亿美元，同比增加 9.0%，占全国比重 44.8%；全国进口商品总值 18409.8 亿美元，同比增加 15.9%，其中外商投资企业进口商品总值 8615.8 亿美元，同比增加 11.8%，占全国比重比 46.8%；全国出口商品总值 22635.2 亿美元，同比增加 7.9%，其中外商投资企业出口商品总值 9775.6 亿美元，同比增加 6.6%，占全国比重 43.2%。（详见附表 5）

近 20 年以来，外商投资企业进出口总值占全国比重始终保持在百分之四十以上。（详见附表 6）

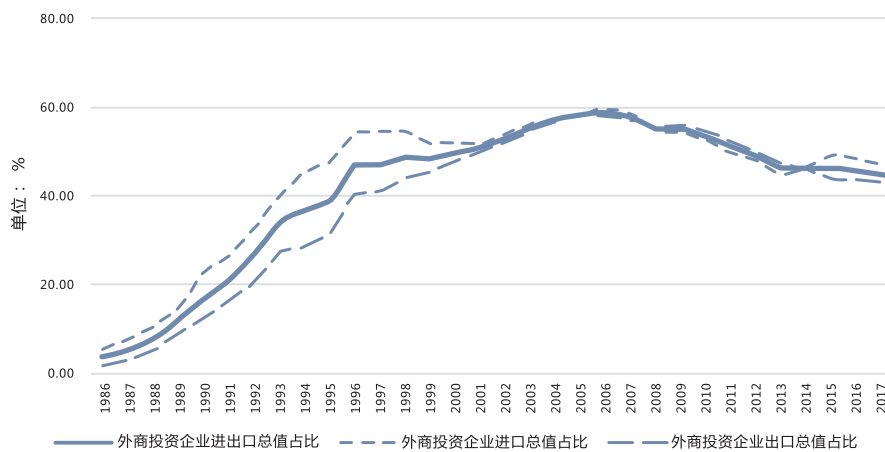


图 6 1986-2017 年外商投资企业进出口总值占比情况

数据来源: 海关统计

三、外商投资来源分布

(一) 对华投资前 15 位国家/地区投资情况

2017 年，对华投资国家/地区按新设企业数排名前三位的分别是香港地区、台湾地区和韩国；按实际投入外资金额排名前三位的分别是香港地区、新加坡和英属维尔京群岛。

表 2 2017 年对华投资前 15 位国家/地区情况

金额单位：万美元

国别/地区	企业数	比重%	实际投入外资金额	比重%
总计	35662	100	13631513	100
香港地区	18066	50.7	9450901	69.3
新加坡	706	2.0	476318	3.5
英属维尔京群岛	309	0.9	399076	2.9
韩国	1627	4.6	367253	2.7
日本	590	1.7	326100	2.4
美国	1346	3.8	264905	1.9
开曼群岛	105	0.3	217690	1.6
荷兰	122	0.3	217398	1.6
台湾地区	3464	9.7	177247	1.3
德国	387	1.1	154163	1.1
百慕大	6	0.0	134213	1.0
萨摩亚	250	0.7	122943	0.9
英国	393	1.1	100333	0.7
丹麦	57	0.2	81947	0.6
法国	209	0.6	79018	0.6
其他	8025	22.5	1062008	7.8

数据来源：商务部外资统计

截至 2017 年 12 月，按照累积对华投资企业数量排名前三的国家/地区是香港地区、台湾地区和美国；按照累积实际投入外资金额排名前三的国家/地区是香港地区、英属维尔京群岛和日本。（详见附表 7）

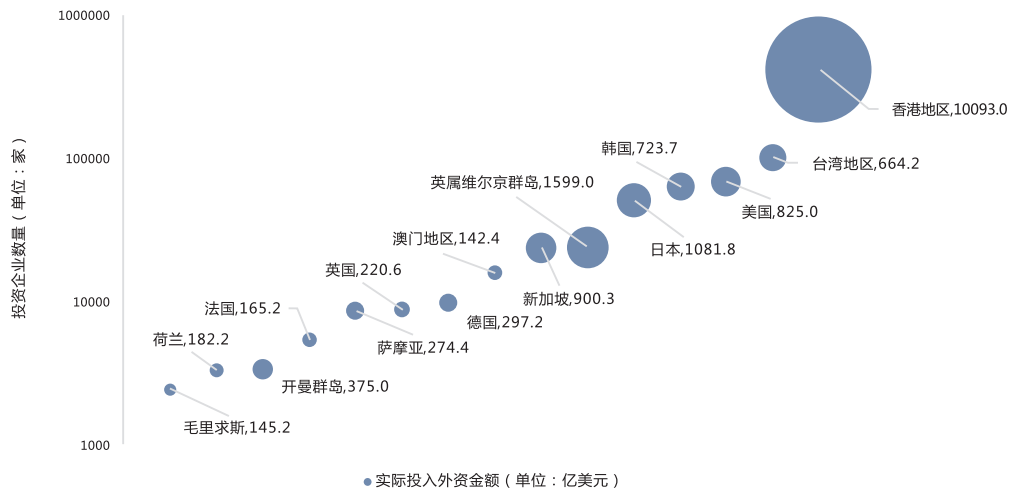


图7 截至2017年12月对华投资前十五位国家/地区情况

数据来源: 商务部外资统计

(二) 主要对华投资国家/地区投资情况

对华投资主要来源地区是亚洲、欧盟、北美及部分自由港地区。2017年亚洲十国/地区（香港地区、印度尼西亚、日本、澳门地区、马来西亚、菲律宾、新加坡、韩国、泰国、台湾地区）对华新设企业数占比72.3%，实际投入外资金额占比79.8%；欧盟主要国家（比利时、丹麦、英国、德国、法国、爱尔兰、意大利、卢森堡、荷兰、希腊、葡萄牙、西班牙、奥地利、芬兰、瑞典）对华新设企业数占比4.8%，实际投入外资金额占比6.0%；北美（美国、加拿大）对华新设企业数占比5.1%，实际投入外资金额占比2.2%；部分自由港地区（毛里求斯、巴巴多斯、开曼群岛、英属维尔京群岛、百慕大、萨摩亚）对华新设企业数占比1.9%，实际投入外资金额占比6.7%。（详见附表8）

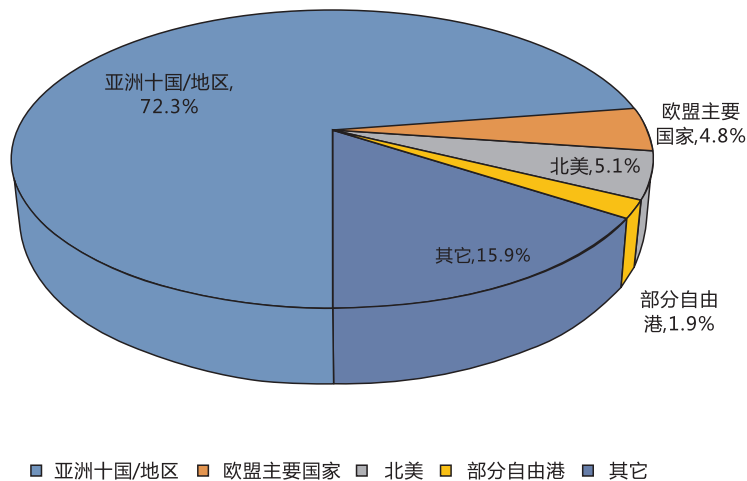


图8 2017年投资企业来源地区概况

数据来源: 商务部外资统计

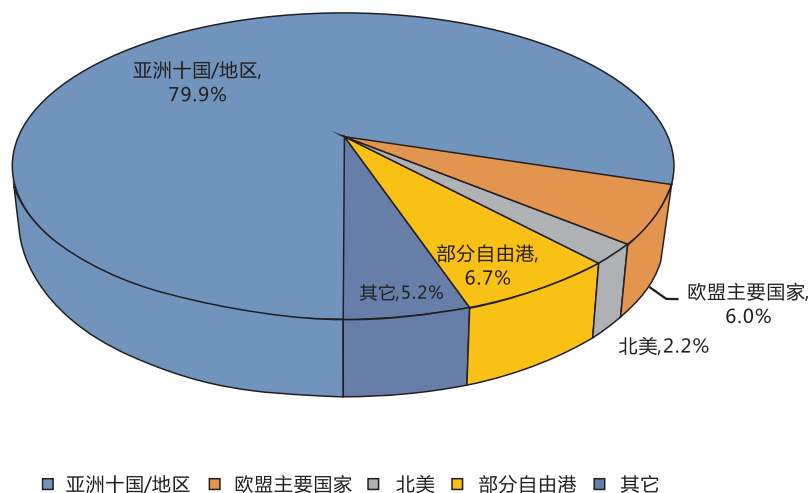


图9 2017年实际投入外资金额来源地区概况

数据来源：商务部外资统计

（三）香港地区投资情况

2017年，香港地区新设企业数18066家，同比增加41.7%，占当年全部新设企业数的50.7%；实际投入金额945.1亿美元，同比增加16.0%，占当年全部实际投入外资金额的69.3%。（详见附表10）

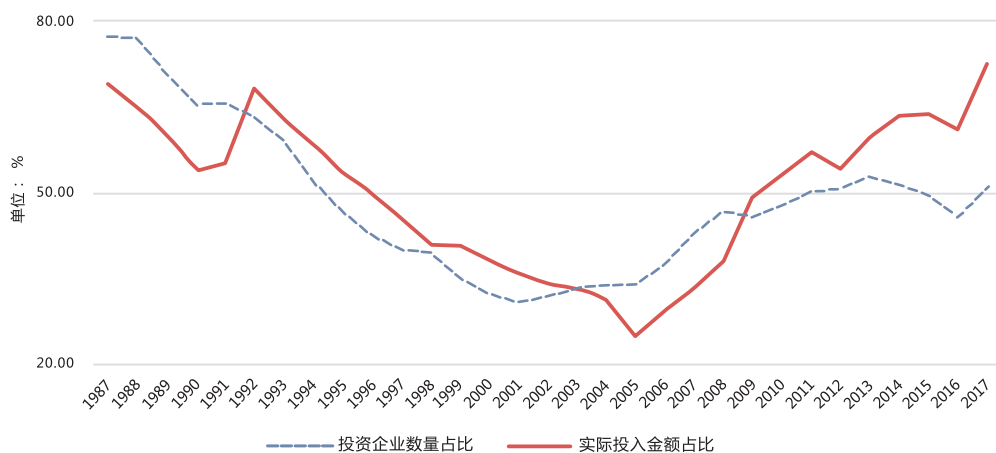


图10 1987-2017年香港地区投资情况

数据来源：商务部外资统计

2017年，香港地区投资行业前5位分别是信息传输、软件和信息技术服务业，制造业，房地产业，租赁和商务服务业，批发零售业；5个行业新设企业数占比70.8%，实际投入金额占比74.3%。

表3 2017 香港地区投资前5位行业

金额单位：万美元

行业	企业数	比重%	实际投入金额	比重%
总计	18066	100	9450901	100
信息传输、软件和信息技术服务业	1909	10.6	1937808	20.5
制造业	2117	11.7	1660347	17.6
房地产业	473	2.6	1384341	14.6
租赁和商务服务业	2673	14.8	1226753	13.0
批发和零售业	5615	31.1	816458	8.6

数据来源：商务部外资统计

（四）台湾地区投资情况

2017年，台湾地区新设立企业3464家，同比下降1.5%，占当年全部新设企业数的9.7%；实际投入金额17.7亿美元，同比下降9.7%，占当年全部实际投入外资金额的1.3%。（详见附表11）

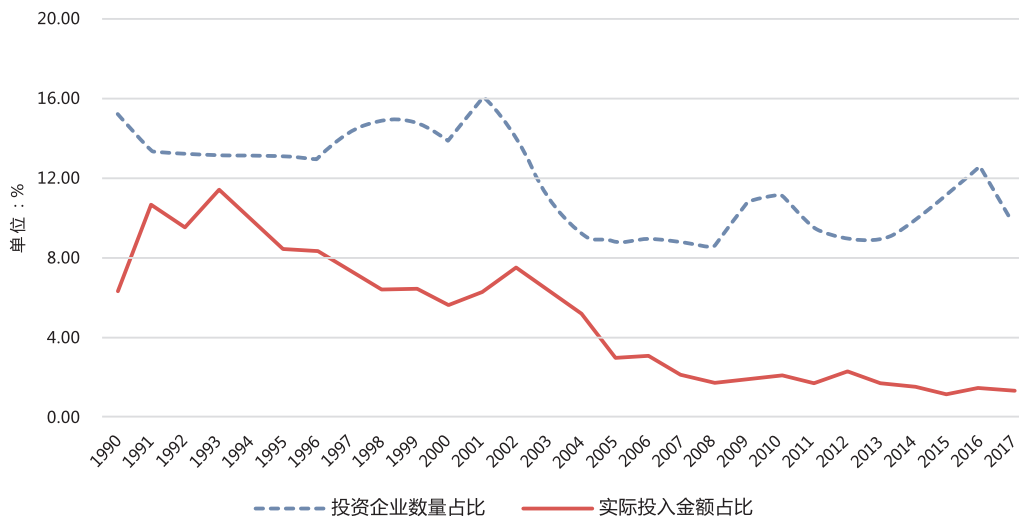


图11 1990-2017年台湾地区投资情况

数据来源：商务部外资统计

2017年，台湾地区投资行业前5位分别是制造业、批发和零售业、租赁和商务服务业、房地产业、科学研究和技术服务业；5个行业新设企业数占比77.8%，实际投入金额占比91.1%。

表 4 2017 台湾地区投资前 5 位行业

金额单位：万美元

行业	企业数	比重%	实际投入金额	比重%
总计	3464	100	177247	100
制造业	519	15.0	118656	66.9
批发和零售业	1108	32.0	15185	8.6
租赁和商务服务业	489	14.1	11008	6.2
房地产业	36	1.0	8579	4.8
科学研究和技术服务业	542	15.6	8000	4.5

数据来源：商务部外资统计

（五）日本投资情况

2017 年，日本新设立外商投资企业 590 家，同比增加 2.4%，占当年全部新设企业数的 1.7%；实际投入外资金额 32.6 亿美元，同比增加 2.4%，占当年全部实际投入外资金额的 2.4%。（详见附表 12）

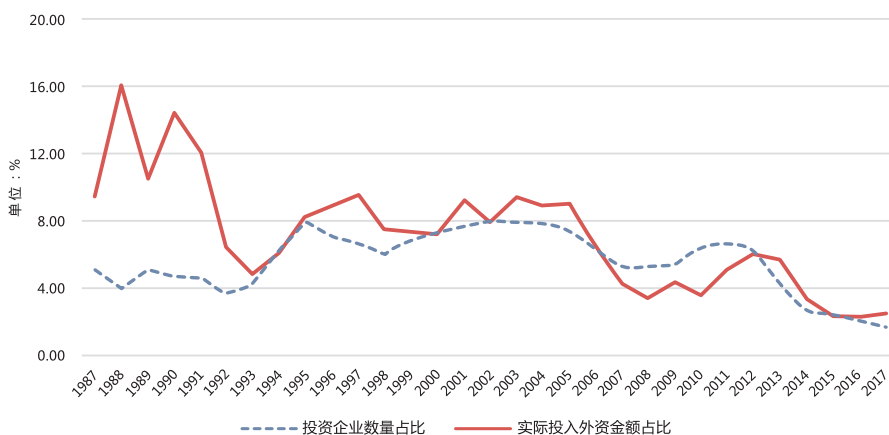


图 12 1987-2017 年日本对华投资情况

数据来源：商务部外资统计

2017 年，日本投资行业前 5 位分别是制造业，租赁和商务服务业，批发和零售业，交通运输、仓储和邮政业，金融业；5 个行业新设企业数占比 73.1%，实际投入外资金额占比 93.9%。

表 5 2017 日本外商直接投资前 5 位行业

金额单位：万美元

行业	企业数	比重%	实际投入外资金额	比重%
总计	590	100	326100	100
制造业	155	26.3	194317	59.6
租赁和商务服务业	84	14.2	57989	17.8
批发和零售业	182	30.8	44233	13.6
交通运输、仓储和邮政业	7	1.2	5199	1.6
金融业	3	0.5	4476	1.4

数据来源：商务部外资统计

（六）新加坡投资情况

2017 年，新加坡新设立外商投资企业 706 家，同比增加 3.2%，占当年全部新设企业数的 2.0%；实际投入外资金额 47.6 亿美元，同比下降 21.2%，占当年全部实际投入外资金额的 3.5%。（详见附表 13）

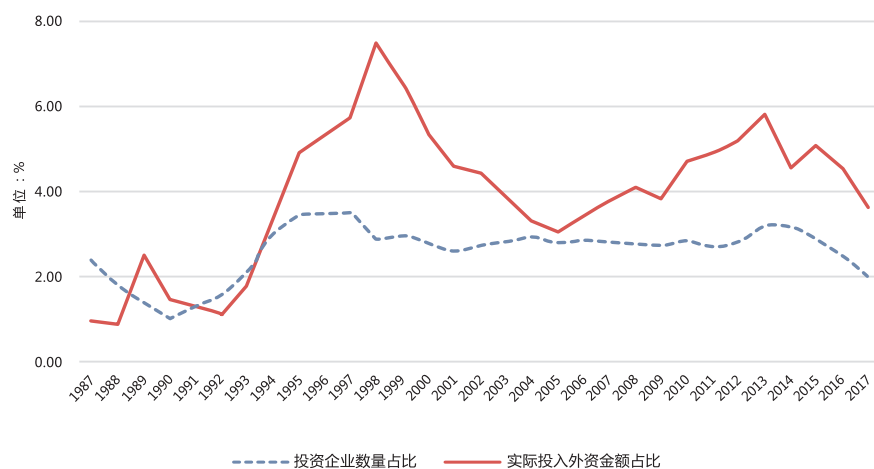


图 13 1987-2017 年新加坡对华投资情况

数据来源：商务部外资统计

2017 年，新加坡投资行业前 5 位分别是制造业，房地产业，租赁和商务服务业，批发和零售业，交通运输、仓储和邮政业；5 个行业新设企业数占比 68.6%，实际投入外资金额占比 77.9%。

表 6 2017 新加坡外商直接投资前 5 位行业

金额单位：万美元

行业	企业数	比重%	实际投入外资金额	比重%
总计	706	100	476318	100
制造业	111	15.7	122627	25.7
房地产业	19	2.7	103484	21.7
租赁和商务服务业	159	22.5	64208	13.5
批发和零售业	160	22.7	42072	8.8
交通运输、仓储和邮政业	35	5.0	38715	8.1

数据来源：商务部外资统计

（七）韩国投资情况

2017 年，韩国新设立外商投资企业 1627 家，同比下降 19.4%，占当年全部新设企业数的 4.6%；实际投入外资金额 36.7 亿美元，同比下降 22.7%，占当年全部实际投入外资金额的 2.7%。（详见附表 14）

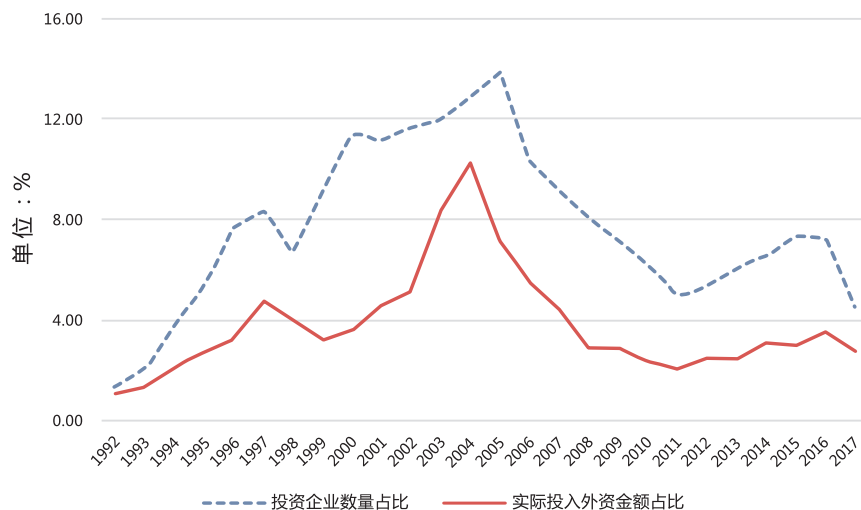


图 14 1992-2017 年韩国对华投资情况

数据来源：商务部外资统计

2017 年，韩国投资行业前 5 位分别是制造业、批发和零售业、租赁和商务服务业、房地产业、科学研究和技术服务业；5 个行业新设企业数占比 78.1%，实际投入外资金额占比 96.6%。

表 7 2017 韩国外商直接投资前 5 位行业

金额单位：万美元

行业	企业数	比重%	实际投入外资金额	比重%
总计	1627	100	367253	100
制造业	364	22.4	282856	77.0
批发和零售业	665	40.9	28059	7.6
租赁和商务服务业	128	7.9	25754	7.0
房地产业	8	0.5	10527	2.9
科学研究和技术服务业	106	6.5	7571	2.1

数据来源：商务部外资统计

（八）美国投资情况

2017 年，美国新设立外商投资企业 1346 家，同比增加 8.7%，占当年全部新设企业数的 3.8%；实际投入外资金额 26.5 亿美元，同比增加 11.0%，占当年全部实际投入外资金额的 1.9%。（详见附表 15）

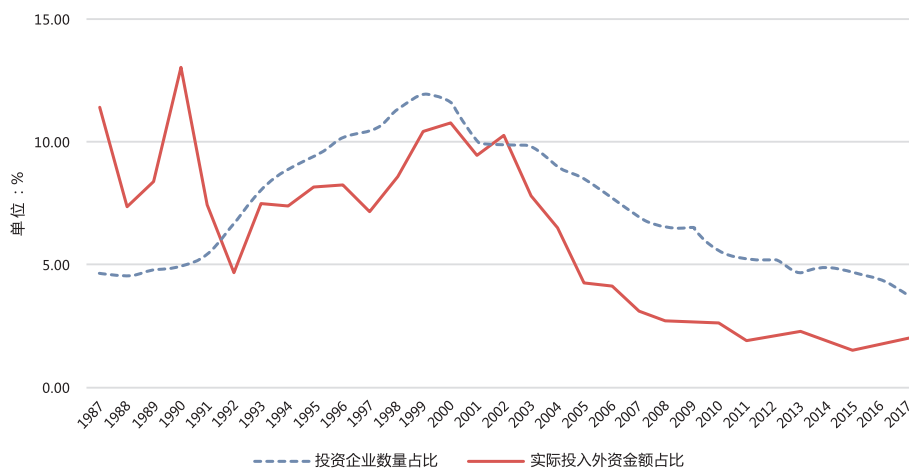


图 15 1987-2017 年美国对华投资情况

数据来源：商务部外资统计

2017 年，美国投资行业前 5 位分别是制造业，科学研究和技术服务业，采矿业，租赁和商务服务业，信息传输、软件和信息技术服务业；5 个行业新设企业数占比 71.1%，实际投入外资金额占比 90.9%。

表 8 2017 美国外商直接投资前 5 位行业

金额单位：万美元

行业	企业数	比重%	实际投入外资金额	比重%
总计	1346	100	264905	100
制造业	259	19.2	93440	35.3
科学研究和技术服务业	304	22.6	56337	21.3
采矿业	1	0.1	38641	14.6
租赁和商务服务业	215	16.0	32873	12.4
信息传输、软件和信息技术服务业	178	13.2	19395	7.3

数据来源：商务部外资统计

（九）欧盟投资情况

2017 年，欧盟新设立外商投资企业 1817 家，同比增加 8.2%，占当年全部新设企业数的 5.1%；实际投入外资金额 82.9 亿美元，同比下降 5.8%，占当年全部实际投入外资金额的 6.1%。（详见附表 16）

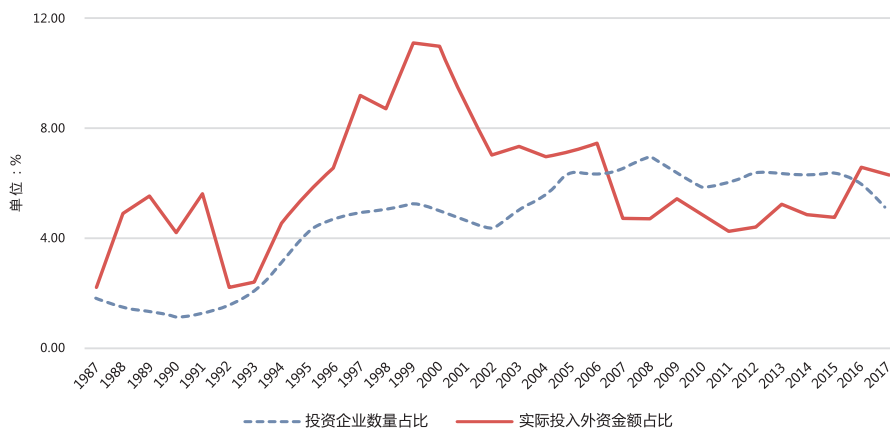


图 16 1987-2017 年欧盟对华投资情况

数据来源：商务部外资统计

2017 年，欧盟投资行业前 5 位分别是制造业、租赁和商务服务业、房地产业、批发和零售业、金融业；5 个行业新设企业数占比 72.0%，实际投入外资金额占比 88.2%。

表 9 2017 欧盟外商直接投资前 5 位行业

金额单位：万美元

行业	企业数	比重%	实际投入外资金额	比重%
总计	1817	100	828811	100
制造业	382	21.0	424025	51.2
租赁和商务服务业	322	17.7	100426	12.1
房地产业	10	0.6	70662	8.5
批发和零售业	585	32.2	69114	8.3
金融业	9	0.5	67128	8.1

数据来源：商务部外资统计

（十）东盟投资情况

2017 年，东盟新设立外商投资企业 1261 家，同比增加 10.4%，占当年全部新设企业数的 3.5%；实际投入外资金额 50.8 亿美元，同比下降 22.2%，占当年全部实际投入外资金额的 3.7%。（详见附表 17）

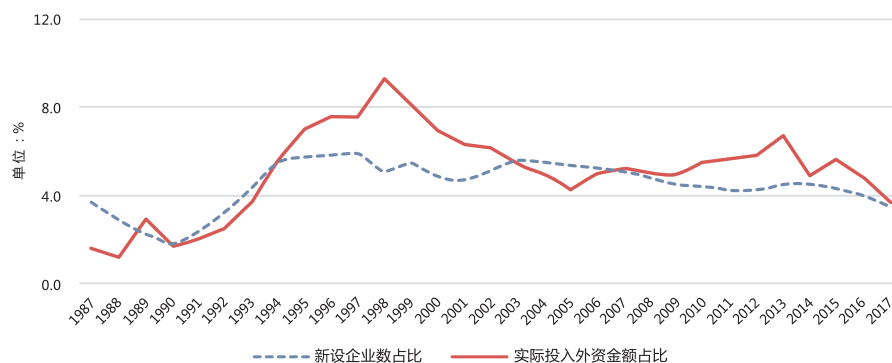


图 17 1987-2017 年东盟对华投资情况

数据来源：商务部外资统计

2017 年，东盟投资行业前 5 位分别是制造业，房地产业，租赁和商务服务业，批发和零售业，交通运输、仓储和邮政业；5 个行业新设企业数占比 70.5%，实际投入外资金额占比 78.9%。

表 10 2017 东盟外商直接投资前 5 位行业

金额单位：万美元

行业	企业数	比重%	实际投入外资金额	比重%
总计	1261	100	508436	100
制造业	177	14.0	137439	27.0
房地产业	23	1.8	105212	20.7
租赁和商务服务业	230	18.2	71303	14.0
批发和零售业	419	33.2	48196	9.5
交通运输、仓储和邮政业	40	3.2	38776	7.6

数据来源：商务部外资统计

（十一）金砖国家投资情况

2017 年，金砖国家新设立外商投资企业 568 家，同比增加 43.1%，占当年全部新设企业数的 1.6%；实际投入外资金额 2.9 亿美元，同比增加 169.3%，占当年全部实际投入外资金额的 0.2%。（详见附表 18）

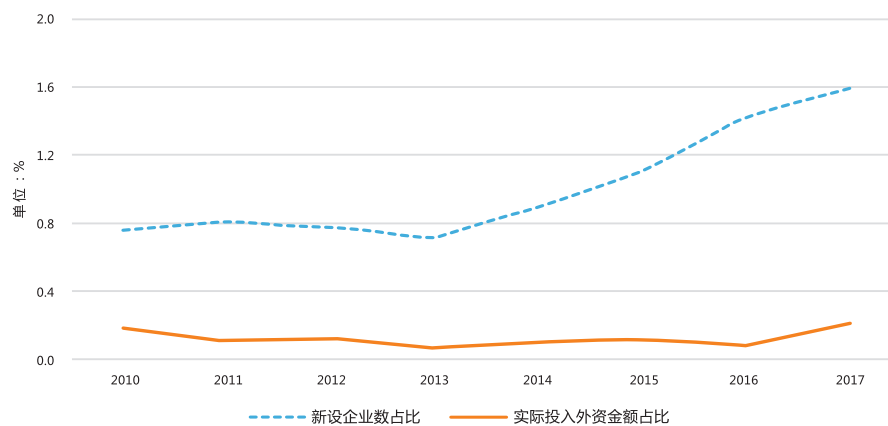


图 18 2010-2017 年金砖国家对华投资情况

数据来源：商务部外资统计

2017 年，金砖国家投资行业前 5 位分别是制造业，信息传输、软件和信息技术服务业，批发和零售业，采矿业，交通运输、仓储和邮政业房地产业；5 个行业新设企业数占比 80.1%，实际投入外资金额占比 99.4%。

表 11 2017 金砖国家外商直接投资前 5 位行业

金额单位：万美元

行业	企业数	比重%	实际投入外资金额	比重%
总计	568	100	28902	100
制造业	47	8.3	15291	52.9
信息传输、软件和信息技术服务业	27	4.8	12675	43.9
批发和零售业	369	65.0	336	1.2
采矿业	1	0.2	247	0.9
交通运输、仓储和邮政业	11	1.9	194	0.7

数据来源：商务部外资统计

（十二）“一带一路”沿线国家投资情况

2017 年，“一带一路”沿线国家新设立外商投资企业 3827 家，同比增加 32.6%，占当年全部新设企业数的 10.7%；实际投入外资金额 54.3 亿美元，同比下降 19.9%，占当年全部实际投入外资金额的 4.0%。（详见附表 19）

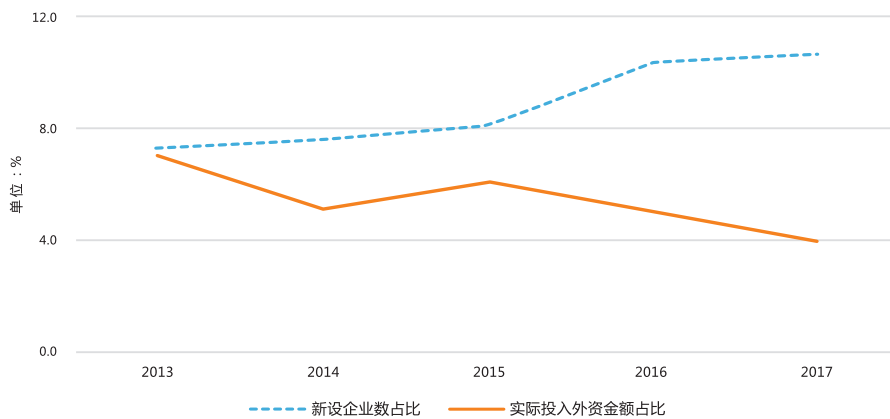


图 19 2013-2017 年“一带一路”沿线国家对华投资情况

数据来源：商务部外资统计

2017 年，“一带一路”沿线国家投资行业前 5 位分别是制造业，房地产业，租赁和商务服务业，批发和零售业，信息传输、软件和信息技术服务业；5 个行业新设企业数占比 86.0%，实际投入外资金额占比 78.5%。

表 12 2017 “一带一路” 沿线国家外商直接投资前 5 位行业

金额单位：万美元

行业	企业数	比重%	实际投入外资金额	比重%
总 计	3827	100	543360	100
制造业	314	8.2	152759	28.1
房地产业	24	0.6	105218	19.4
租赁和商务服务业	380	9.9	73956	13.6
批发和零售业	2416	63.1	49795	9.2
信息传输、软件和信息技术服务业	159	4.2	44961	8.3

数据来源：商务部外资统计

四、外商投资结构分布

（一）外商直接投资方式

截至 2017 年 12 月，外商直接投资方式以外资企业为主。其中，外资企业数量 506156 家，占全部外商投资企业的 56.2%，实际使用外资金额 12444.0 亿美元，占全部实际使用外资金额的 61.9%；中外合资企业 331829 家，占比 36.9%，实际使用外资金额 4982.7 亿美元，占比 24.8%；中外合作企业 60912 家，占比 6.8%，实际使用外资金额 1116.4 亿美元，占比 5.6%。

表 13 截至 2017 年 12 月外商直接投资分方式统计

金额单位：亿美元

方 式	企业数		实际使用外资金额	
	数量	比重%	金额	比重%
总计	900165	100	20109.3	100
中外合资企业	331829	36.9	4982.7	24.8
中外合作企业	60912	6.8	1116.4	5.6
外资企业	506156	56.2	12444.0	61.9
股份公司	802	0.1	339.7	1.7
合作开发	193	0.0	86.9	0.4
其它	273	0.0	1139.7	5.7

数据来源：商务部外资统计

（二）外商直接投资产业

2017 年，三大产业中，第三产业是外商直接投资的主要方向，新设企业数占比 81.5%，实际使用外资金额占比 69.4%。

表 14 2017 年外商直接投资产业结构

金额单位：亿美元

行业名称	企业数	比重%	实际使用外资金额	比重%
总计	35662	100	1363.2	100
第一产业	579	1.6	7.9	0.6
第二产业	6017	16.9	409.5	30.0
第三产业	29066	81.5	945.8	69.4

数据来源：商务部外资统计

2017年，外商直接投资涉及的行业主要集中在批发和零售业、租赁和商务服务业、制造业、科学研究和技术服务业、信息传输、软件和信息技术服务业、金融业、房地产业，投资于这7个行业的企业数量占比88.1%，实际使用外资金额占比87.7%。（详见附表20）

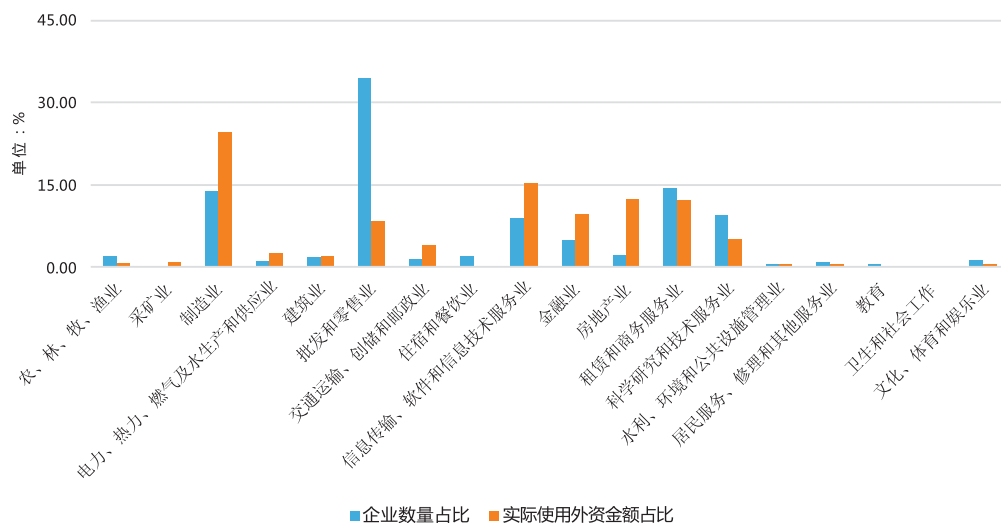


图20 2017外商直接投资行业结构概况

数据来源：商务部外资统计

2017年高技术产业中外商直接投资主要集中在高技术服务业，新设立企业数5990家，占全年新设立企业数的16.8%；实际使用外资金额260.7亿美元，占全年实际使用外资金额的19.1%。高技术制造业新设立企业数1032家，占全年新设立企业数的2.9%；实际使用外资金额98.9亿美元，占全年实际使用外资金额的7.3%。

表15 2017年外商直接投资高技术产业情况

金额单位：亿美元

行业	企业数		实际使用外资金额	
	数量	比重%	金额	比重%
总计	35662	100	1363.2	100
高技术产业	7022	19.7	359.6	26.4
高技术制造业	1032	2.9	98.9	7.3
高技术服务业	5990	16.8	260.7	19.1

数据来源：商务部外资统计

（三）东、中、西部地区外商直接投资情况

2017年，按照地域分布，外商直接投资重点区域是我国东部地区，新设企业数占比90.4%，实际使用外资金额占比84.1%；中部地区新设企业数占比4.7%，实际使用外资金额占比6.1%；西部地区新设企业数占比5.0%，实际使用外资金额占比6.0%。

表 16 2017 年东部、中部、西部地区外商直接投资情况

金额单位:亿美元

地方名称	企业数	比重%	实际使用外资金额	比重%
总 计	35662	100	1363.2	100
东部地区	32219	90.4	1145.9	84.1
中部地区	1672	4.7	83.1	6.1
西部地区	1761	4.9	81.3	6.0
有关部门	10	0.0	52.8	3.9

注：有关部门项下包含银行、证券、保险行业吸收外商直接投资数据。

东部地区：北京、天津、河北、辽宁、上海、江苏、浙江、福建、山东、广东、海南。

中部地区：山西、吉林、黑龙江、安徽、江西、河南、湖北、湖南。

西部地区：内蒙古、广西、四川、重庆、贵州、云南、陕西、甘肃、青海、宁夏、新疆、西藏。

数据来源：商务部外资统计

五、全球外商直接投资情况

（一）全球 FDI 流动情况

2017 年 FDI 流入金额 14298.1 亿美元，同比下降 23.4%，流出金额 14299.7 亿美元，同比下降 2.9%。全球跨国直接投资整体情况看，近年来，FDI 流入和流出相对稳定，2005-2017 年平均流入金额 14928.8 亿美元，平均流出金额 14334.8 亿美元。

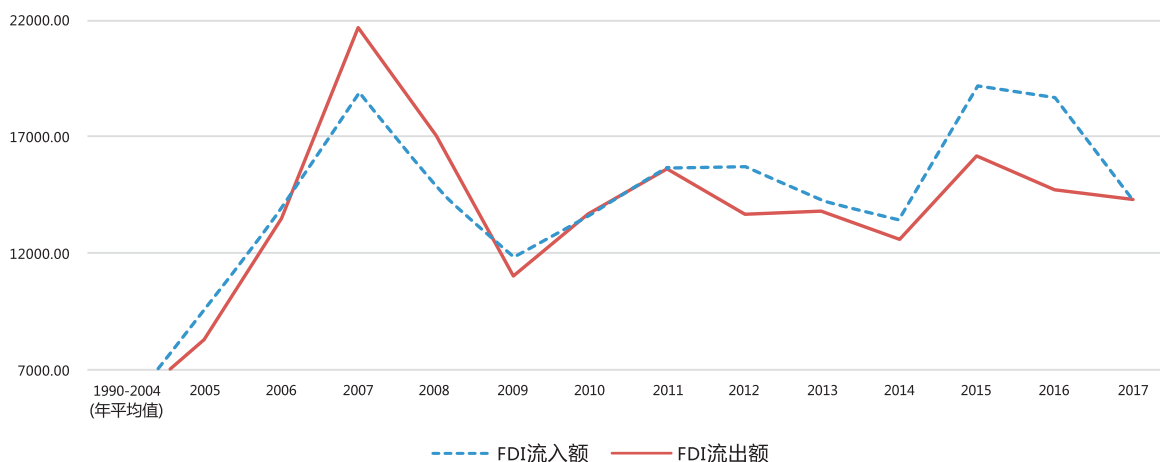


图 21 2004—2017 年全球跨国直接投资情况

数据来源：联合国贸发会议《世界投资报告 2018》

（二）全球 FDI 流入量前 10 位国家/地区

2017 年全球 FDI 流入总额 14298.1 亿美元，同比下降 23.4%；FDI 流入量排名第一的是美国，FDI 流入量 2753.8 亿美元，占比 19.3%，同比下降 39.8%；中国排名第二，FDI 流入量 1363.2 亿美元，占比 9.5%，同比上升 2.0%。

表 17 2017 年全球 FDI 流入量前 10 位国家/地区一览

金额单位：亿美元

国别/地区	金额	占全球总流量%	同比%
世界	14298.1	100	-23.4
美国	2753.8	19.3	-39.8
中国	1363.2	9.5	2.0
香港地区	1043.3	7.3	-11.1
巴西	627.1	4.4	8.1
新加坡	620.1	4.3	-20.0
荷兰	579.6	4.1	-32.4
法国	498.0	3.5	41.6
澳大利亚	463.7	3.2	-2.9
瑞士	409.9	2.9	-15.2
印度	399.2	2.8	-10.3

数据来源：联合国贸发会议《世界投资报告 2018》

（三）全球 FDI 流出量前 10 位国家/地区

2017 年全球 FDI 流出总额 14299.7 亿美元，同比下降 2.9%；2017 年，FDI 流出量排名第一的是美国，FDI 流出量 3422.69 亿美元，占比 23.9%，同比增加 21.9%；日本排名第二，FDI 流出量 1604.5 亿美元，占比 11.2%，同比增加 10.5；中国排名第三，FDI 流出量 1246.3 亿美元，占比 8.7%，同比下降 36.5%。

表 18 2017 年全球 FDI 流出量前 10 位国家/地区一览

金额单位：亿美元

国别/地区	金额	占全球总流量%	同比%
世界	14299.7	100.0	-2.9
美国	3422.7	23.9	21.9
日本	1604.5	11.2	10.5
中国	1246.3	8.7	-36.5
英国	996.1	7.0	21.9
香港地区	828.4	5.8	38.8
德国	823.4	5.8	60.0
加拿大	769.9	5.4	4.7
英属维尔京群岛	707.8	5.0	92.7
法国	581.2	4.1	-8.1
卢森堡	411.6	2.9	-7.2

数据来源：联合国贸发会议《世界投资报告 2018》

（四）世界各区域 FDI 流入情况

2017 年，全球 FDI 流入区域主要集中于亚洲、北美和欧盟地区，其中东亚、南亚和东南亚吸收 FDI 占比 31.5%，欧盟占比 21.2%，北美占比 21.0%。

表 19 2017 年世界各区域 FDI 流入情况

金额单位：亿美元

地区	金额	占全球总流量%	同比%
全球总计	14298.1	100.0	-23.4
发达经济体	7123.8	49.8	-37.1
欧盟	3035.8	21.2	-42.1
欧洲其他发达国家	301.4	2.1	-26.4
北美	2996.3	21.0	-39.4
其他发达国家	790.4	5.5	7.0
发展中经济体	6706.6	46.9	0.1
非洲	417.7	2.9	-21.5
亚洲	4758.4	33.3	0.1
东亚、南亚和东南亚	4503.3	31.5	1.3
西亚	255.1	1.8	-17.1
拉美和加勒比	1513.4	10.6	8.3
大洋洲	17.1	0.1	-11.1
东南欧和独联体	449.1	3.1	-1.8

数据来源：联合国贸发会议《世界投资报告 2018》

（五）世界各区域 FDI 流出情况

2017 年，全球 FDI 流出区域主要集中于发达国家经济体，其中欧盟 FDI 流出占比 30.5%，北美占比 29.3%，其他发达国家占比 12.0%。

表 20 2017 年世界各区域 FDI 流出情况

金额单位：亿美元

地区	金额	占全球总流量%	同比%
全球总计	14299.7	100.0	-2.9
发达经济体	10092.1	70.6	-3.1
欧盟	4357.4	30.5	-3.8
欧洲其他发达国家	-179.3	-1.3	-124.4
北美	4192.6	29.3	18.4
其他发达国家	1721.5	12.0	7.1

地区	金额	占全球总流量%	同比%
发展中经济体	3807.8	26.6	-6.4
非洲	120.8	0.8	7.5
亚洲	3501.5	24.5	-9.0
东亚、南亚和东南亚	3168.7	22.2	-8.7
西亚	332.8	2.3	-11.2
拉美和加勒比	173.3	1.2	85.6
大洋洲	12.2	0.1	-15.2
东南欧和独联体	397.2	2.8	60.5

数据来源：联合国贸发会议《世界投资报告 2018》

（六）主要对华投资国家 FDI 流出情况

2017 年，FDI 流出量前 10 位国家/地区中，香港地区、台湾地区、新加坡、韩国的对华投资额占其 FDI 流出量的比重均超过 10%，是中国重要的投资来源国家/地区。

表 21 2017 年对华投资前 10 位国家/地区 FDI 流出对比表

金额单位：亿美元

国别/地区	2017 年 FDI 流出量	2017 年对华投资额	对华投资占中国吸收 FDI%	对华投资占其 FDI 流出量%
香港地区	828.4	945.1	69.3	-
新加坡	246.8	47.6	3.5	19.3
英属维尔京群岛	707.8	39.9	2.9	5.6
韩国	316.8	36.7	2.7	11.6
日本	1604.5	32.6	2.4	2.0
美国	3422.7	26.5	1.9	0.8
开曼群岛	303.7	21.8	1.6	7.2
荷兰	233.2	21.7	1.6	9.3
台湾地区	113.6	17.7	1.3	15.6
德国	823.4	15.4	1.1	1.9
合计	8600.8	1205.1	88.4	14.0

数据来源：联合国贸发会议《世界投资报告 2018》、商务部外资统计

（七）“一带一路”沿线国家 FDI 流动情况

2017 年，“一带一路”沿线国家 FDI 流入量 3153.4 亿美元，占全球 FDI 流入量的 22.1%。排名前五位国家分别是，新加坡，FDI 流入量 620.1 亿美元；印度，FDI 流入量 399 亿美元；俄罗斯，FDI 流入量 252.8 亿美元；以色列，FDI 流入量 189.5 亿美元；越南，FDI 流入量 141 亿美元。（详见附表 22）

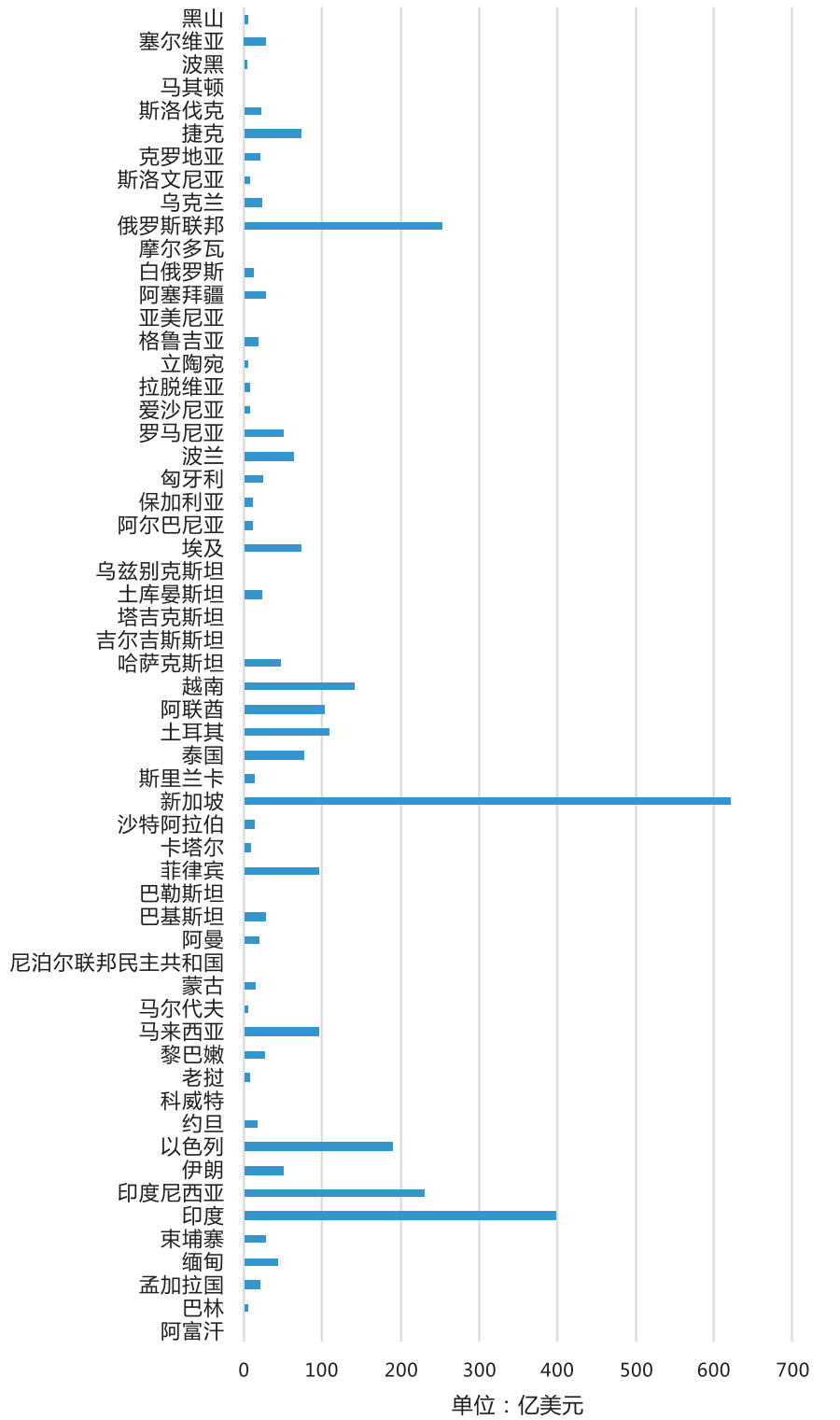


图 22 2017 年“一带一路”沿线国家 FDI 流入情况

数据来源：联合国贸发会议《世界投资报告 2018》

2017年，“一带一路”沿线国家FDI流出量2601.0亿美元，占全球FDI流出量18.2%。排名前五位国家分别是，俄罗斯，FDI流出量360.3亿美元；新加坡，FDI流出量246.8亿美元；泰国，FDI流出量192.8亿美元；阿联酋，FDI流出量130.6亿美元；印度，FDI流出量113.0亿美元。（详见附表22）

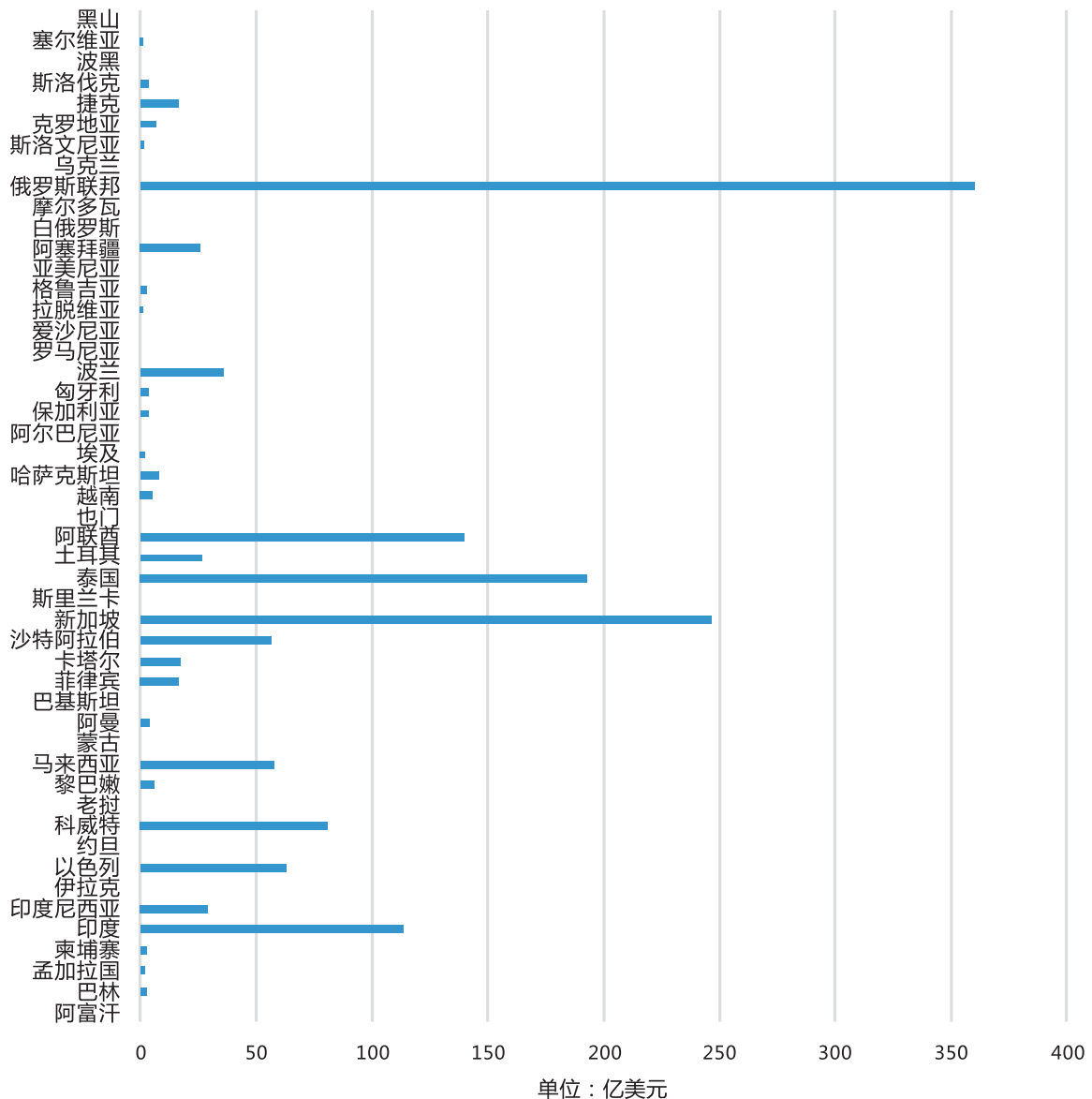


图 23 2017年“一带一路”沿线国家 FDI 流出情况

数据来源：联合国贸发会议《世界投资报告 2018》

（八）“金砖国家” FDI 流动情况

2017年金砖国家 FDI 流入量 1292.4 亿美元（不包括中国），占全球 FDI 流入量的 9.0%，FDI 流出量

533.5 亿美元，占全球 FDI 流出量的 3.7%，对华投资金额 2.9 亿美元。FDI 流入量最多的国家是巴西，FDI 流入量 627.1 亿美元；FDI 流出量最多的国家是俄罗斯，对外投资 360.3 亿美元。

表 22 2017 年“金砖国家” FDI 流动情况

金额单位：亿美元

国家/地区	FDI 流入量	占全球总流入量%	FDI 流出量	占全球总流出量%	对华投资金额
中国	1363.2	9.5	1246.0	8.7	-
金砖国家	1292.4	9.0	533.5	3.7	2.9
印度	399.2	2.8	113.0	0.8	1.6
南非	13.3	0.1	73.6	0.5	0.7
俄罗斯	252.8	1.8	360.3	2.5	0.2
巴西	627.1	4.4	-13.5	-0.1	0.4

数据来源：商务部外资统计和联合国贸发会议《世界投资报告 2018》

（九）发展中国家 FDI 流动情况

2017 年，发展中国家呈现净 FDI 流入状态，净流入 2989.8 亿美元，其中，FDI 流出量占全球流出量的 26.6%，FDI 流入量占全球流入量的 46.9%。亚洲（主要东亚、南亚和东南亚地区）是主要的 FDI 流动地区，亚洲发展中国家 FDI 流出量占全球流出量比例 24.5%，FDI 流入量占全球流入量的 33.3%

表 23 2017 年发展中国家的 FDI 流动情况

金额单位：亿美元

地区	FDI 流出量		FDI 流入量		净流入
	金额	占全球流量%	金额	占全球流量%	
发展中经济体	3807.8	26.6	6706.6	46.9	2898.8
非洲	120.8	0.8	417.7	2.9	296.9
亚洲	3501.5	24.5	4758.4	33.3	1256.9
东亚、南亚和东南亚	3168.7	22.2	4503.3	31.5	1334.7
西亚	332.8	2.3	255.1	1.8	-77.8
拉美和加勒比	173.3	1.2	1513.4	10.6	1340.1
大洋洲	12.2	0.1	17.1	0.1	4.9
东南欧和独联体	397.2	2.8	449.1	3.1	51.8

数据来源：联合国贸发会议《世界投资报告 2018》

附表:

附表 1 截至 2017 年外商直接投资情况

金额单位: 亿美元

年 度	企业数	实际使用外资金额
总 计	900165	20109.3
1979-1982	920	17.7
1983	638	9.2
1984	2166	14.2
1985	3073	19.6
1986	1498	22.4
1987	2233	23.1
1988	5945	31.9
1989	5779	33.9
1990	7273	34.9
1991	12978	43.7
1992	48764	110.1
1993	83437	275.2
1994	47549	337.7
1995	37011	375.2
1996	24556	417.3
1997	21001	452.6
1998	19799	454.6
1999	16918	403.2
2000	22347	407.2
2001	26140	468.8
2002	34171	527.4
2003	41081	535.1
2004	43664	606.3
2005	44019	724.1
2006	41496	727.2
2007	37892	835.2
2008	27537	1083.1
2009	23442	940.7
2010	27420	1147.3
2011	27717	1239.9
2012	24934	1210.7
2013	22819	1239.1
2014	23794	1285.0
2015	26584	1355.8
2016	27908	1337.1
2017	35662	1363.2

数据来源: 商务部外资统计

附表 2 全国工业增加值及规模以上外商投资企业工业增加值增幅表

金额单位：亿元人民币

年份	全国工业增加值	增幅%	规模以上外商投资企业工业增加值增幅%
1992	10341	21.0	48.8
1993	14249	20.0	46.2
1994	19547	18.8	28.0
1995	25024	14.0	19.0
1996	29530	12.5	13.1
1997	33024	11.3	13.4
1998	34135	8.9	12.7
1999	36015	8.6	12.9
2000	40260	9.9	14.6
2001	43856	8.7	11.9
2002	47776	10.0	13.3
2003	55364	12.8	20.0
2004	65777	11.6	18.8
2005	77961	11.6	16.6
2006	92238	12.9	16.9
2007	111694	14.9	17.5
2008	131728	10.0	9.9
2009	138096	9.1	6.2
2010	165126	12.6	14.5
2011	195143	10.9	10.4
2012	208906	8.1	6.3
2013	222338	7.7	8.3
2014	233856	7.0	6.3
2015	236506	6.0	3.7
2016	247860	6.0	4.5
2017	279997	6.4	6.6

资料来源：各年度《国民经济和社会发展统计公报》，其中，工业增加值绝对数按现价计算，增长速度按可比价格计算

附表3 1992-2017年实际使用外资占全社会固定资产投资情况表

年度	全社会固定资产投资		实际使用外资金额 (亿美元)	占固定资产投资比重(%)
	(亿元人民币)	(折合亿美元)		
1992	8080.1	1465.2	110.1	7.5
1993	13072.3	2268.7	275.2	12.1
1994	17042.1	1977.3	337.7	17.1
1995	20019.3	2397.2	375.2	15.7
1996	22913.5	2756.0	417.3	15.1
1997	24941.1	3008.7	452.6	15.0
1998	28406.2	3431.1	454.6	13.3
1999	29854.7	3606.4	403.2	11.2
2000	32917.7	3976.3	407.2	10.2
2001	37213.5	4496.0	468.5	10.4
2002	43499.9	5255.5	527.4	10.0
2003	55566.6	6713.4	535.1	8.0
2004	70477.4	8515.1	606.3	7.1
2005	88773.6	10837.0	724.1	6.7
2006	109998.2	13798.4	727.2	5.3
2007	137323.9	18059.4	835.2	4.6
2008	172828.4	24884.9	1083.1	4.4
2009	224598.8	32879.3	940.7	2.9
2010	251683.8	37179.1	1147.3	3.1
2011	311485.1	48226.5	1239.9	2.6
2012	374694.7	59357.6	1210.7	2.0
2013	446294.1	72062.0	1239.1	1.7
2014	512020.7	83353.0	1285.0	1.5
2015	562000.0	90231.8	1355.8	1.5
2016	606466.0	91303.6	1337.1	1.5
2017	641238.0	94972.9	1363.2	1.4

数据来源：《中国统计年鉴》、商务部外资统计。按当年平均汇率折合亿美元。

附表4 1992-2017年外商投资企业税收统计（不包括关税和土地费）

金额单位：亿元人民币

年度	全国税收收入	增幅%	其中：外商投资企业税收额	增幅%	占全国%
1992	3084.2	-	122.3	-	4.0
1993	3998.8	29.7	226.6	85.3	5.7
1994	4854.2	21.4	402.6	77.7	8.3
1995	5746.2	18.4	604.5	50.1	10.5
1996	6608.0	15.0	764.1	26.4	11.6
1997	7914.6	19.8	993.0	30.0	12.6
1998	8949.8	13.1	1230.0	23.9	13.7
1999	10120.4	13.1	1648.9	34.1	16.3
2000	11831.0	16.9	2217.0	34.5	18.7
2001	14460.9	22.2	2883.0	30.0	19.9
2002	16932.2	17.1	3487.0	21.0	20.6
2003	19094.2	12.8	4268.0	22.4	22.4
2004	23121.9	21.1	5355.0	25.5	23.2
2005	27712.4	19.9	6391.3	19.4	23.1
2006	33662.6	21.5	7976.9	24.8	23.7
2007	44189.4	31.3	9972.6	25.0	22.6
2008	52453.8	18.7	12118.9	21.5	23.1
2009	58037.8	10.7	13615.2	12.4	23.5
2010	71183.0	22.7	16389.9	20.4	23.0
2011	87179.3	22.5	19638.1	19.8	22.5
2012	97830.4	12.2	21768.8	10.9	22.3
2013	107900.1	10.3	22574.9	3.7	20.9
2014	116331.9	7.8	24920.6	10.4	21.4
2015	124892.0	4.8	24817.2	-0.4	19.9
2016	140504.0	3.3	25659.2	3.4	18.3
2017	155739.3	10.8	29185.1	13.7	18.7

数据来源：《中国统计年鉴》及相关部门；其中，2017年全国税收数据来自税务总局。

附表5 2017年外商投资企业进出口商品总值统计

金额单位：亿美元

月份	进出口			进口			出口		
	全国	外商投资企业	比重%	全国	外商投资企业	比重%	全国	外商投资企业	比重%
1	3121.5	1321	42.3	1316.4	583	44.3	1805.1	738	40.9
2	2485.0	1222	49.2	1297.3	624	48.1	1187.7	598	50.4
3	3355.5	1513	45.1	1565.2	715	45.7	1790.3	798	44.6
4	3188.9	1387	43.5	1412.9	646	45.7	1776.0	741	41.7
5	3382.4	1471	43.5	1492.1	697	46.7	1890.4	774	40.9
6	3483.6	1537	44.1	1534.9	717	46.7	1948.6	820	42.1
7	3392.3	1495	44.1	1470.6	689	46.9	1921.6	806	41.9
8	3554.5	1603	45.1	1573.8	762	48.4	1980.7	841	42.5
9	3678.5	1709	46.5	1699.6	830	48.8	1978.9	879	44.4
10	3385.4	1562	46.1	1506.5	717	47.6	1878.9	845	45.0
11	3928.5	1776	45.2	1769.3	830	46.9	2159.2	946	43.8
12	4089.1	1796	43.9	1771.1	806	45.5	2318.0	990	42.7
全年	41045.0	18392	44.8	18409.8	8616	46.8	22635.2	9776	43.2

数据来源：海关统计（全国进出口），商务部外资统计（外资企业进出口）

附表6 1986-2017年外商投资企业进出口商品总值统计

金额单位:亿美元

年度	进出口			进口			出口		
	全国	外商投资企业	比重%	全国	外商投资企业	比重%	全国	外商投资企业	比重%
1986	738.5	29.9	4.0	429.0	24.0	5.6	309.4	5.8	1.9
1987	826.5	45.8	5.5	432.2	33.7	7.8	394.4	12.1	3.1
1988	1027.8	83.4	8.1	552.7	58.8	10.6	475.2	24.6	5.2
1989	1116.8	137.1	12.3	591.4	88.0	14.9	525.4	49.1	9.4
1990	1154.4	201.2	17.4	533.5	123.0	23.1	620.9	78.1	12.6
1991	1357.0	289.6	21.3	637.9	169.1	26.5	719.1	120.5	16.8
1992	1655.3	437.5	26.4	805.9	263.9	32.7	849.4	173.6	20.4
1993	1957.0	670.7	34.3	1039.6	418.3	40.2	917.4	252.4	27.5
1994	2366.2	876.5	37.0	1156.2	529.3	45.8	1210.1	347.1	28.7
1995	2808.5	1098.2	39.1	1320.8	629.4	47.7	1487.7	468.8	31.5
1996	2899.0	1371.1	47.3	1388.4	756.0	54.5	1510.7	615.1	40.7
1997	3250.6	1526.2	47.0	1423.6	777.2	54.6	1827.0	749.0	41.0
1998	3239.2	1576.8	48.7	1401.7	767.2	54.7	1837.6	809.6	44.1
1999	3606.5	1745.1	48.4	1657.2	858.8	51.8	1949.3	886.3	45.5
2000	4743.1	2367.1	49.9	2251.0	1172.7	52.1	2492.1	1194.4	47.9
2001	5097.7	2591.0	50.8	2436.1	1258.6	51.7	2661.6	1332.4	50.1
2002	6207.9	3302.2	53.2	2952.2	1602.9	54.3	3255.7	1699.4	52.2
2003	8512.1	4722.6	55.5	4128.4	2319.1	56.2	4383.7	2403.4	54.8
2004	11547.9	6631.6	57.4	5614.2	3245.6	57.8	5933.7	3386.1	57.1
2005	14221.2	8317.2	58.5	6601.2	3875.1	58.7	7620.0	4442.1	58.3
2006	17606.9	10364.4	58.9	7916.1	4726.2	59.7	9690.7	5638.3	58.2
2007	21744.4	12568.5	57.8	9562.8	5609.5	58.7	12181.5	6959.0	57.1
2008	25616.3	14105.8	55.1	11330.9	6199.6	54.7	14285.5	7906.2	55.4
2009	22072.7	12174.4	55.2	10056.0	5452.1	54.2	12016.6	6722.3	55.9
2010	29727.6	16003.1	53.8	13948.3	7380.0	52.9	15779.3	8623.1	54.6
2011	36419.4	18601.6	51.1	17460.4	8648.3	49.5	18986.0	9953.3	52.4
2012	38675.1	18940.0	49.0	18174.0	8712.5	47.9	20501.1	10227.5	49.9
2013	41603.3	19190.9	46.1	19502.9	8748.2	44.9	22100.4	10442.7	47.3
2014	43030.0	19840.0	46.1	19603.0	9093.0	46.4	23427.0	10747.0	45.9
2015	39586.4	18346.0	46.3	16820.7	8299.0	49.3	22765.7	10047.0	44.1
2016	36855.6	16871.0	45.8	15879.3	7703.0	48.5	20976.3	9168.0	43.7
2017	41045.0	18391.4	44.8	18409.8	8615.8	46.8	22635.2	9775.6	43.2

数据来源:海关统计

附表 7 截至 2017 年对华投资前十五位国家/地区情况

金额单位：亿美元

国别/地区	企业数	比重%	实际投入外资金额	比重%
总计	900165	100	20109.3	100.0
香港地区	417032	46.3	10093.0	50.2
英属维尔京群岛	24166	2.7	1599.0	8.0
日本	51006	5.7	1081.8	5.4
新加坡	23871	2.7	900.3	4.5
美国	68431	7.6	825.1	4.1
韩国	63385	7.0	723.7	3.6
台湾地区	102279	11.4	664.3	3.3
开曼群岛	3386	0.4	375.0	1.9
德国	9781	1.1	297.2	1.5
萨摩亚	8644	1.0	274.4	1.4
英国	8844	1.0	220.6	1.1
荷兰	3310	0.4	182.2	0.9
法国	5406	0.6	165.2	0.8
毛里求斯	2451	0.3	145.2	0.7
澳门地区	15917	1.8	142.4	0.7
其他	92256	10.3	2420.0	12.0

数据来源：商务部外资统计

附表 8 2017 年部分国家/地区对华直接投资情况

单位：万美元

国别/地区	企业数	比重%	实际投入外资金额	比重%
总计	35662	100	13631513	100
亚洲十国/地区	25792	72.3	10887992	79.9
香港地区	18066	50.7	9450901	69.3
印度尼西亚	51	0.1	4076	0.0
日本	590	1.7	326100	2.4
澳门地区	843	2.4	63738	0.5
马来西亚	329	0.9	10836	0.1
菲律宾	35	0.1	500	0.0
新加坡	706	2.0	476318	3.5
韩国	1627	4.6	367253	2.7
泰国	81	0.2	11023	0.1
台湾地区	3464	9.7	177247	1.3
欧盟主要国家	1697	4.8	822966	6.0
比利时	34	0.1	14759	0.1
丹麦	57	0.2	81947	0.6
英国	393	1.1	100333	0.7
德国	387	1.1	154163	1.1
法国	209	0.6	79018	0.6
爱尔兰	38	0.1	14881	0.1
意大利	201	0.6	19482	0.1
卢森堡	25	0.1	59587	0.4
荷兰	122	0.3	217398	1.6
希腊	14	0.0	85	0.0
葡萄牙	12	0.0	1499	0.0
西班牙	100	0.3	14246	0.1
奥地利	42	0.1	9488	0.1
芬兰	21	0.1	5385	0.0
瑞典	42	0.1	50695	0.4
北美	1805	5.1	294174	2.2
加拿大	459	1.3	29269	0.2
美国	1346	3.8	264905	1.9
部分自由港	685	1.9	912393	6.7
毛里求斯	15	0.0	34368	0.3
巴巴多斯	0	0.0	4103	0.0
开曼群岛	105	0.3	217690	1.6
英属维尔京群岛	309	0.9	399076	2.9
百慕大	6	0.0	134213	1.0
萨摩亚	250	0.7	122943	0.9
其它	5683	15.9	713988	5.2

数据来源：商务部外资统计

附表9 截至2017年部分国家/地区对华直接投资情况

金额单位: 亿美元

国别/地区	企业数	比重%	实际投入外资金额	比重%
总计	900165	100	20109.3	100
部分亚洲国家地区	689176	76.6	13782.4	68.5
香港地区	417032	46.3	10093.0	50.2
印度尼西亚	1937	0.2	25.8	0.1
日本	51006	5.7	1081.8	5.4
澳门地区	15917	1.8	142.4	0.7
马来西亚	6362	0.7	75.8	0.4
菲律宾	2973	0.3	33.1	0.2
新加坡	23871	2.7	900.3	4.5
韩国	63385	7.0	723.7	3.6
泰国	4414	0.5	42.2	0.2
台湾地区	102279	11.4	664.3	3.3
欧盟主要国家	42111	4.7	1185.9	5.9
比利时	1040	0.1	18.1	0.1
丹 麦	992	0.1	40.4	0.2
英 国	8844	1.0	220.6	1.1
德 国	9781	1.1	297.2	1.5
法 国	5406	0.6	165.2	0.8
爱尔兰	390	0.0	18.3	0.1
意大利	5818	0.7	70.8	0.4
卢森堡	472	0.1	50.8	0.3
荷 兰	3310	0.4	182.2	0.9
希 腊	156	0.0	1.0	0.0
葡萄牙	234	0.0	2.1	0.0
西班牙	2392	0.3	36.6	0.2
奥地利	1259	0.1	20.0	0.1
芬 兰	562	0.1	14.1	0.1
瑞 典	1455	0.2	48.5	0.2
北美	82813	9.2	929.4	4.6
加拿大	14382	1.6	104.4	0.5
美 国	68431	7.6	825.1	4.1
部分自由港	38961	4.3	2439.5	12.1
毛里求斯	2451	0.3	145.2	0.7
巴巴多斯	314	0.0	45.8	0.2
开曼群岛	3386	0.4	375.0	1.9
英属维尔京群岛	24166	2.7	1599.0	8.0
萨摩亚	8644	1.0	274.4	1.4
其他	47104	5.2	1772.2	8.8

数据来源: 商务部外资统计

附表 10 1987-2017 年香港地区投资情况一览

金额单位：万美元

年度	企业数			实际投入金额		
	香港地区	全国	比重%	香港地区	全国	比重%
1987	1721	2233	77.1	158794	231353	68.6
1988	4562	5945	76.7	206760	319368	64.7
1989	4072	5779	70.5	203690	339257	60.0
1990	4751	7273	65.3	188000	348711	53.9
1991	8502	12978	65.5	240525	436634	55.1
1992	30781	48764	63.1	750707	1100751	68.2
1993	49134	83437	58.9	1727475	2751495	62.8
1994	24622	47549	51.8	1966544	3376650	58.2
1995	17186	37011	46.4	2006037	3752053	53.5
1996	10397	24556	42.3	2067732	4172552	49.6
1997	8405	21001	40.0	2063200	4525704	45.6
1998	7805	19799	39.4	1850836	4546275	40.7
1999	5902	16918	34.9	1636305	4031871	40.6
2000	7199	22347	32.2	1549998	4071481	38.1
2001	8008	26140	30.6	1671730	4687759	35.7
2002	10845	34171	31.7	1786093	5274286	33.9
2003	13633	41081	33.2	1770010	5350467	33.1
2004	14719	43664	33.7	1899830	6062998	31.3
2005	14831	44019	33.7	1794879	7240569	24.8
2006	15496	41496	37.3	2130718	7271500	29.3
2007	16208	37892	42.8	2770342	8352089	33.2
2008	12857	27537	46.7	4103640	10831244	37.9
2009	10701	23442	45.7	4607547	9406467	49.0
2010	13070	27420	47.7	6056677	11473424	52.8
2011	13889	27717	50.1	7050016	12398500	56.9
2012	12604	24934	50.6	6556119	12107314	54.2
2013	12014	22819	52.7	7339667	12391120	59.2
2014	12169	23794	51.1	8126820	12850156	63.2
2015	13146	26584	49.5	8638672	13557660	63.7
2016	12753	27908	45.7	8146508	13371142	60.9
2017	18066	35662	50.7	9450901	13631513	69.3

数据来源：商务部外资统计

附表 11 1990-2017 年台湾地区投资情况一览

金额单位：万美元

年 度	企业数			实际投入金额		
	台湾地区	全国	比重%	台湾地区	全国	比重%
1990	1103	7273	15.2	22240	348711	6.4
1991	1735	12978	13.4	46641	436634	10.7
1992	6430	48764	13.2	105050	1100751	9.5
1993	10948	83437	13.1	313859	2751495	11.4
1994	6247	47549	13.1	339104	3376650	10.0
1995	4847	37011	13.1	316155	3752053	8.4
1996	3184	24556	13.0	347484	4172552	8.3
1997	3014	21001	14.4	328939	4525704	7.3
1998	2970	19799	15.0	291521	4546275	6.4
1999	2499	16918	14.8	259870	4031871	6.5
2000	3108	22347	13.9	229628	4071481	5.6
2001	4214	26140	16.1	297994	4687759	6.4
2002	4853	34171	14.2	397064	5274286	7.5
2003	4495	41081	10.9	337724	5350467	6.3
2004	4002	43664	9.2	311749	6062998	5.1
2005	3907	44019	8.9	215171	7240569	3.0
2006	3752	41496	9.0	222990	7271500	3.1
2007	3299	37892	8.7	177437	8352089	2.1
2008	2360	27537	8.6	189868	10831244	1.8
2009	2555	23442	10.9	188055	9406467	2.0
2010	3072	27420	11.2	247574	11473424	2.2
2011	2639	27717	9.5	218343	12398500	1.8
2012	2229	24934	8.9	284707	12107314	2.4
2013	2017	22819	8.8	208771	12391120	1.7
2014	2318	23794	9.7	201812	12850156	1.6
2015	2962	26584	11.1	153710	13557660	1.1
2016	3517	27908	12.6	196280	13371142	1.5
2017	3464	35662	9.7	177247	13631513	1.3

数据来源：商务部外资统计

附表 12 1987-2017 年日本投资情况一览

金额单位：万美元

年度	企业数			实际投入外资金额		
	日本	全国	比重%	日本	全国	比重%
1987	113	2233	5.1	21970	231353	9.5
1988	237	5945	4.0	51453	319368	16.1
1989	294	5779	5.1	35634	339257	10.5
1990	341	7273	4.7	50338	348711	14.4
1991	599	12978	4.6	53250	436634	12.2
1992	1805	48764	3.7	70983	1100751	6.5
1993	3488	83437	4.2	132410	2751495	4.8
1994	3018	47549	6.4	207529	3376650	6.2
1995	2946	37011	8.0	310846	3752053	8.3
1996	1742	24556	7.1	367935	4172552	8.8
1997	1402	21001	6.7	432647	4525704	9.6
1998	1198	19799	6.1	340036	4546275	7.5
1999	1167	16918	6.9	297308	4031871	7.4
2000	1614	22347	7.2	291585	4071481	7.2
2001	2019	26140	7.7	434842	4687759	9.3
2002	2745	34171	8.0	419009	5274286	7.9
2003	3254	41081	7.9	505419	5350467	9.5
2004	3454	43664	7.9	545157	6062998	9.0
2005	3269	44019	7.4	652977	7240569	9.0
2006	2590	41496	6.2	475941	7271500	6.6
2007	1974	37892	5.2	358922	8352089	4.3
2008	1438	27537	5.2	365235	10831244	3.4
2009	1275	23442	5.4	410497	9406467	4.4
2010	1762	27420	6.4	408372	11473424	3.6
2011	1859	27717	6.7	632963	12398500	5.1
2012	1579	24934	6.3	735156	12107314	6.1
2013	943	22819	4.1	705817	12391120	5.7
2014	653	23794	2.7	432530	12850156	3.4
2015	643	26584	2.4	319496	13557660	2.4
2016	576	27908	2.1	309585	13371142	2.3
2017	590	35662	1.7	326100	13631513	2.4

数据来源：商务部外资统计

附表 13 1987-2017 年新加坡投资情况一览

金额单位：万美元

年度	企业数			实际投入外资金额		
	新加坡	全国	比重%	新加坡	全国	比重%
1987	53	2233	2.4	2163	231353	0.9
1988	105	5945	1.8	2782	319368	0.9
1989	78	5779	1.4	8414	339257	2.5
1990	72	7273	1.0	5043	348711	1.5
1991	169	12978	1.3	5821	436634	1.3
1992	742	48764	1.5	12231	1100751	1.1
1993	1751	83437	2.1	49004	2751495	1.8
1994	1443	47549	3.0	117961	3376650	3.5
1995	1279	37011	3.5	185122	3752053	4.9
1996	851	24556	3.5	224356	4172552	5.4
1997	734	21001	3.5	260641	4525704	5.8
1998	566	19799	2.9	340397	4546275	7.5
1999	503	16918	3.0	264249	4031871	6.6
2000	622	22347	2.8	217220	4071481	5.3
2001	675	26140	2.6	214355	4687759	4.6
2002	930	34171	2.7	233720	5274286	4.4
2003	1144	41081	2.8	205840	5350467	3.9
2004	1279	43664	3.0	200814	6062998	3.3
2005	1217	44019	2.8	220432	7240569	3.0
2006	1189	41496	2.9	246300	7271500	3.4
2007	1059	37892	2.8	318457	8352089	3.8
2008	757	27537	2.8	443529	10831244	4.1
2009	640	23442	2.7	360484	9406467	3.8
2010	781	27420	2.9	542820	11473424	4.7
2011	740	27717	2.7	609681	12398500	4.9
2012	698	24934	2.8	630508	12107314	5.2
2013	731	22819	3.2	722872	12391120	5.8
2014	757	23794	3.2	582668	12850156	4.5
2015	762	26584	2.9	690407	13557660	5.1
2016	684	27908	2.5	604668	13371142	4.5
2017	706	35662	2.0	476318	13631513	3.5

数据来源：商务部外资统计

附表 14 1992-2017 年韩国投资情况一览

金额单位：万美元

年度	企业数			实际投入外资金额		
	韩国	全国	比重%	韩国	全国	比重%
1992	650	48764	1.3	11948	1100751	1.1
1993	1748	83437	2.1	37381	2751495	1.4
1994	1849	47549	3.9	72283	3376650	2.1
1995	1975	37011	5.3	104289	3752053	2.8
1996	1895	24556	7.7	135752	4172552	3.3
1997	1753	21001	8.4	214238	4525704	4.7
1998	1309	19799	6.6	180320	4546275	4.0
1999	1547	16918	9.1	127473	4031871	3.2
2000	2565	22347	11.5	148961	4071481	3.7
2001	2909	26140	11.1	215178	4687759	4.6
2002	4008	34171	11.7	272073	5274286	5.2
2003	4920	41081	12.0	448854	5350467	8.4
2004	5625	43664	12.9	624786	6062998	10.3
2005	6115	44019	13.9	516834	7240569	7.1
2006	4262	41496	10.3	399319	7271500	5.5
2007	3452	37892	9.1	367831	8352089	4.4
2008	2226	27537	8.1	313532	10831244	2.9
2009	1669	23442	7.1	270007	9406467	2.9
2010	1695	27420	6.2	269217	11473424	2.4
2011	1375	27717	5.0	255107	12398500	2.1
2012	1306	24934	5.2	303800	12107314	2.5
2013	1371	22819	6.0	305421	12391120	2.5
2014	1558	23794	6.6	396564	12850156	3.1
2015	1958	26584	7.4	403401	13557660	3.0
2016	2018	27908	7.2	475112	13371142	3.6
2017	1627	35662	4.6	367253	13631513	2.7

数据来源：商务部外资统计

附表 15 1987-2017 年美国投资情况一览

金额单位：万美元

年 度	企业数			实际投入外资金额		
	美国	全国	比重%	美国	全国	比重%
1987	104	2233	4.7	26280	231353	11.4
1988	269	5945	4.5	23596	319368	7.4
1989	276	5779	4.8	28427	339257	8.4
1990	357	7273	4.9	45599	348711	13.1
1991	694	12978	5.4	32320	436634	7.4
1992	3265	48764	6.7	51105	1100751	4.6
1993	6750	83437	8.1	206312	2751495	7.5
1994	4223	47549	8.9	249080	3376650	7.4
1995	3474	37011	9.4	308301	3752053	8.2
1996	2517	24556	10.3	344333	4172552	8.3
1997	2188	21001	10.4	323915	4525704	7.2
1998	2238	19799	11.3	389844	4546275	8.6
1999	2028	16918	12.0	421586	4031871	10.5
2000	2609	22347	11.7	438389	4071481	10.8
2001	2606	26140	10.0	443322	4687759	9.5
2002	3363	34171	9.8	542392	5274286	10.3
2003	4060	41081	9.9	419851	5350467	7.9
2004	3925	43664	9.0	394095	6062998	6.5
2005	3741	44019	8.5	306123	7240569	4.2
2006	3205	41496	7.7	299995	7271500	4.1
2007	2627	37892	6.9	261623	8352089	3.1
2008	1772	27537	6.4	294434	10831244	2.7
2009	1530	23442	6.5	255499	9406467	2.7
2010	1502	27420	5.5	301734	11473424	2.6
2011	1426	27717	5.1	236932	12398500	1.9
2012	1301	24934	5.2	259809	12107413	2.2
2013	1061	22819	4.7	281987	12391120	2.3
2014	1176	23794	4.9	237074	12850156	1.8
2015	1241	26584	4.7	208889	13557660	1.5
2016	1238	27908	4.4	238601	13371142	1.8
2017	1346	35662	3.8	264905	13631513	1.9

数据来源：商务部外资统计

附表 16 1987-2017 年欧洲联盟投资情况一览

金额单位：万美元

年 度	企业数			实际投入外资金额		
	欧盟	全国	比重%	欧盟	全国	比重%
1987	40	2233	1.8	5271	231353	2.3
1988	87	5945	1.5	15727	319368	4.9
1989	78	5779	1.4	18761	339257	5.5
1990	82	7273	1.1	14735	348711	4.2
1991	163	12978	1.3	24562	436634	5.6
1992	763	48764	1.6	24297	1100751	2.2
1993	1726	83437	2.1	67124	2751495	2.4
1994	1464	47549	3.1	153769	3376650	4.6
1995	1582	37011	4.3	213131	3752053	5.7
1996	1167	24556	4.8	273706	4172552	6.6
1997	1040	21001	5.0	417115	4525704	9.2
1998	1002	19799	5.1	397869	4546275	8.8
1999	894	16918	5.3	447906	4031871	11.1
2000	1130	22347	5.1	447946	4071481	11.0
2001	1214	26140	4.6	418270	4687759	8.9
2002	1486	34171	4.4	370982	5274286	7.0
2003	2074	41081	5.1	393031	5350467	7.4
2004	2423	43664	5.6	423904	6062998	7.0
2005	2846	44019	6.5	519378	7240569	7.2
2006	2619	41496	6.3	543947	7271500	7.5
2007	2487	37892	6.6	394529	8352089	4.7
2008	1929	27537	7.0	511526	10831244	4.7
2009	1510	23442	6.4	512233	9406467	5.5
2010	1598	27420	5.8	556883	11473424	4.9
2011	1665	27717	6.0	526695	12398500	4.3
2012	1605	24934	6.4	534536	12107314	4.4
2013	1446	22819	6.3	651793	12391120	5.3
2014	1499	23794	6.3	622672	12850156	4.9
2015	1704	26584	6.4	651285	13557660	4.8
2016	1680	27908	6.0	879992	13371142	6.6
2017	1817	35662	5.1	828811	13631513	6.1

数据来源：商务部外资统计

附表 17 1987-2017 东盟投资情况一览

金额单位：万美元

年度	企业数			实际投入外资金额		
	东盟	全国	比重%	东盟	全国	比重%
1987	82	2233	3.7	3680	231353	1.6
1988	171	5945	2.9	3917	319368	1.2
1989	133	5779	2.3	10011	339257	3.0
1990	128	7273	1.8	6046	348711	1.7
1991	303	12978	2.3	8782	436634	2.0
1992	1601	48764	3.3	27872	1100751	2.5
1993	3613	83437	4.3	102169	2751495	3.7
1994	2638	47549	5.5	189478	3376650	5.6
1995	2146	37011	5.8	264548	3752053	7.1
1996	1434	24556	5.8	318549	4172552	7.6
1997	1261	21001	6.0	342800	4525704	7.6
1998	1002	19799	5.1	422318	4546275	9.3
1999	931	16918	5.5	328877	4031871	8.2
2000	1090	22347	4.9	284458	4071481	7.0
2001	1239	26140	4.7	298395	4687759	6.4
2002	1759	34171	5.1	325594	5274286	6.2
2003	2302	41081	5.6	292543	5350467	5.5
2004	2438	43664	5.6	304053	6062998	5.0
2005	2342	44019	5.3	310543	7240569	4.3
2006	2186	41496	5.3	364286	7271500	5.0
2007	1922	37892	5.1	439124	8352089	5.3
2008	1323	27537	4.8	546099	10831244	5.0
2009	1047	23442	4.5	467820	9406467	5.0
2010	1217	27420	4.4	632368	11473424	5.5
2011	1174	27717	4.2	700478	12398500	5.6
2012	1056	24934	4.2	707299	12107314	5.8
2013	1037	22819	4.5	834734	12391120	6.7
2014	1076	23794	4.5	629976	12850156	4.9
2015	1145	26584	4.3	765772	13557660	5.6
2016	1142	27908	4.1	653124	13371142	4.9
2017	1261	35662	3.5	508436	13631513	3.7

数据来源：商务部外资统计

附表 18 2010-2017 金砖国家投资情况一览

金额单位：万美元

年度	企业数			实际投入外资金额		
	金砖国家	全国	比重%	金砖国家	全国	比重%
2010	207	27420	0.8	20800	11473424	0.2
2011	224	27717	0.8	12946	12398500	0.1
2012	194	24934	0.8	14763	12107314	0.1
2013	163	22819	0.7	8509	12391120	0.1
2014	212	23794	0.9	12563	12850156	0.1
2015	294	26584	1.1	14674	13557660	0.1
2016	397	27908	1.4	10729	13371142	0.1
2017	568	35662	1.6	28902	13631513	0.2

数据来源：商务部外资统计

附表 19 2013-2017 “一带一路” 沿线国家投资情况一览

金额单位：万美元

年度	企业数			实际投入外资金额		
	“一带一路” 沿线国家	全国	比重%	“一带一路” 沿线国家	全国	比重%
2013	1661	22819	7.3	866360	12391120	7.0
2014	1808	23794	7.6	660050	12850156	5.1
2015	2154	26584	8.1	824705	13557660	6.1
2016	2886	27908	10.3	678715	13371142	5.1
2017	3827	35662	10.7	543360	13631513	4.0

数据来源：商务部外资统计

附表 20 2017 年外商直接投资主要行业参考数据

金额单位：亿美元

行业	企业数	同比%	实际使用外资金额	同比%
总 计	35662	27.8	1363.2	2.0
农、林、牧、渔业	706	26.5	10.8	-43.4
农业	451	32.7	3.5	-30.3
稻谷种植	23	15.0	0.4	-15.3
林业	23	64.3	0.3	-77.4
畜牧业	40	-4.8	3.8	-59.7
渔业	65	22.6	0.3	-59.7
采矿业	26	0.0	13.0	1251.4
石油和天然气开采业	5	0.0	11.8	6003.2
制造业	4986	24.3	335.1	-5.6
农副食品加工业	131	-3.0	5.0	-27.9
其他谷物磨制	4	100.0	0.1	-48.1
屠宰及肉类加工	20	25.0	0.7	-71.1
水产品加工	38	8.6	0.8	-24.4
石油、煤炭及其他燃料加工业	7	-46.2	4.5	81.4
化学原料和化学制品制造业	241	19.3	23.8	6.5
合成材料制造	47	17.5	4.5	-2.3
非金属矿物制品业	236	34.1	11.8	-32.6
水泥制造	1	-50.0	0.3	-87.7
轻质建筑材料制造	14	133.3	0.5	-4.9
砖瓦、石材等建筑材料制造	109	41.6	3.2	5.1
玻璃制造	4	33.3	0.3	-60.9
平板玻璃制造	4	33.3	0.3	-60.9
陶瓷制品制造	26	30.0	0.4	46.1
建筑陶瓷制品制造	4	100.0	0.1	-58.1
通用设备制造业	574	57.7	28.9	-0.6
铁路、船舶、航空航天和其他运输设备制造业	40	0.0	5.8	140.5
计算机、通信和其他电子设备制造业	576	25.0	59.0	2.6
计算机制造	43	-14.0	3.7	65.7

行业	企业数	同比%	实际使用外资金额	同比%
通信设备制造	25	13.6	2.6	189.0
电子器件制造	155	52.0	16.6	-47.4
电力、热力、燃气及水生产和供应业	372	19.6	35.2	64.0
电力、热力生产和供应业	263	23.5	17.5	1.4
电力生产	241	31.7	15.3	5.4
火力发电	6	0.0	2.3	42.6
水力发电	9	350.0	0.7	928.6
其他电力生产	226	29.9	12.1	0.0
燃气生产和供应业	24	0.0	9.5	2018.8
自来水生产和供应	5	-44.4	3.7	750.0
建筑业	633	136.2	26.2	5.7
房屋建筑业	76	65.2	8.1	102.9
土木工程建筑业	110	52.8	15.6	-21.0
铁路工程建筑	62	148.0	11.3	-25.1
港口及航运设施工程建筑	13	160.0	0.7	-21.9
批发和零售业	12283	30.7	114.8	-27.7
交通运输、仓储和邮政业	517	21.7	55.9	9.8
住宿和餐饮业	703	13.4	4.2	14.8
旅游饭店	107	1428.6	1.4	105.6
信息传输、软件和信息技术服务业	3169	116.6	209.2	147.8
金融业	1752	-29.5	132.0	-26.7
房地产业	737	95.0	168.6	-14.2
房地产开发经营	409	212.2	154.0	-16.8
租赁和商务服务业	5087	9.9	167.4	3.8
科学研究和技术服务业	3391	38.8	68.4	5.0
水利、环境和公共设施管理业	156	60.8	5.7	35.1
居民服务、修理和其他服务业	349	42.5	5.7	15.7
教育	203	111.5	0.8	-17.9
卫生和社会工作	114	48.1	3.1	20.1
文化、体育和娱乐业	476	28.3	7.0	161.3
公共管理、社会保障和社会组织	2	-	0.3	-

数据来源：商务部外资统计

附表 21 2017 年全球对外投资前 5 位国家/地区及欧盟、东盟在华投资情况对比表

金额单位：亿美元

国家/地区	FDI 流出量	占全球总流量%	2017 年在华投资额	占中国吸收 FDI%	占其 FDI 流出量%
美国	3422.7	23.9	26.5	1.9	0.8
日本	1604.5	11.2	32.6	2.4	2.0
英国	996.1	7.0	10.0	0.7	1.0
香港地区	828.4	5.8	945.1	69.3	-
德国	823.4	5.8	15.4	1.1	1.9
欧盟	4357.4	30.5	82.9	6.1	1.9
东盟	550.3	3.9	50.8	3.7	9.2

数据来源：联合国贸发会议《世界投资报告 2018》、商务部外资统计

注：2017 年中国对外投资金额位列全球第三。

附表 22 2017 年“一带一路”沿线国家 FDI 流动情况

金额单位：万美元

国别	FDI 流入量	FDI 流入量占全球 总流量%	FDI 流出量	FDI 流出量占全球 总流量%	对华投资金额
“一带一路”沿线国家	31534112	22.1	26010096	18.2	543360
阿富汗	5394	0.0	1	0.0	73
巴林	51888	0.0	22899	0.0	30
孟加拉国	215156	0.2	16983	0.0	10
文莱	-4630	-0.0	-8470	0.0	2573
缅甸	434100	0.3	-	-	170
柬埔寨	278437	0.2	25903	0.0	1505
印度	3991609	2.8	1130435	0.8	15772
印度尼西亚	2306311	1.6	291171	0.2	4076
伊朗	501900	0.4	-	-	-
伊拉克	-503240	-0.4	7780	0.0	182
以色列	1895400	1.3	627530	0.4	773
约旦	166479	0.1	662	0.0	19
科威特	30053	0.0	811239	0.6	1474
老挝	81303	0.1	2988	0.0	1082
黎巴嫩	262796	0.2	56733	0.0	19
马来西亚	954345	0.7	579182	0.4	10836
马尔代夫	51749	0.0	-	-	-
蒙古	149435	0.1	4861	0.0	308
尼泊尔联邦民主共和国	19800	0.0	-	-	1
阿曼	186740	0.1	39603	0.0	599
巴基斯坦	280600	0.2	6700	0.0	99
巴勒斯坦	20320	0.0	-1860	0.0	73
菲律宾	952428	0.7	161398	0.1	500
卡塔尔	98599	0.1	169478	0.1	-
沙特阿拉伯	142100	0.1	562500	0.4	1493
新加坡	6200597	4.3	2468157	1.7	476318
斯里兰卡	137490	0.1	7153	0.0	22
叙利亚	-	-	-	-	934
泰国	763525	0.5	1928314	1.4	11023
土耳其	1086400	0.8	263000	0.2	674

国别	FDI 流入量	FDI 流入量占全球 总流量%	FDI 流出量	FDI 流出量占全球 总流量%	对华投资金额
阿联酋	1035422	0.7	1395550	1.0	1357
也门	-26985	0.0	560	0.0	33
越南	1410000	1.0	54000	0.0	353
哈萨克斯坦	463374	0.3	78727	0.1	561
吉尔吉斯斯坦	9379	0.0	-120	0.0	12
塔吉克斯坦	14133	0.0	-	-	2
土库曼斯坦	231350	0.2	-	-	-
乌兹别克斯坦	9577	0.0	-	-	-
埃及	739170	0.5	19900	0.0	75
阿尔巴尼亚	111912	0.1	2626	0.0	-
保加利亚	107066	0.1	29581	0.0	9
匈牙利	249164	0.2	32205	0.0	148
波兰	643352	0.5	359071	0.3	289
罗马尼亚	516003	0.4	1014	0.0	711
爱沙尼亚	78443	0.1	1859	0.0	-
拉脱维亚	72121	0.1	9241	0.0	-
立陶宛	59538	0.0	-3115	0.0	2372
格鲁吉亚	186190	0.1	26810	0.0	-
亚美尼亚	24572	0.0	2225	0.0	-
阿塞拜疆	286700	0.2	256400	0.2	-
白俄罗斯	127640	0.1	3390	0.0	824
摩尔多瓦	21384	0.0	807	0.0	-
俄罗斯联邦	2528403	1.8	3603184	2.5	2384
乌克兰	220200	0.2	800	0.0	2707
斯洛文尼亚	70200	0.1	10655	0.0	37
克罗地亚	210425	0.2	64362	0.1	-
捷克	741216	0.5	162347	0.1	797
斯洛伐克	227671	0.2	34951	0.0	44
马其顿	25634	0.0	-178	0.0	-
波黑	42517	0.0	4241	0.0	-
塞尔维亚	286672	0.2	14565	0.0	7
黑山	54587	0.0	1140	0.0	-

数据来源：联合国贸发会议《世界投资报告 2018》、商务部外资统计

Countries	FDI Inflow	Share of Global FDI Inflows%	FDI Outflow	Share of Global FDI Outflows%	Investment in China
Vietnam	1410000	1.0	54000	0.0	353
Kazakhstan	463374	0.3	78727	0.1	561
Kyrgyzstan	9379	0.0	-120	0.0	12
Tajikistan	14133	0.0	-	-	2
Turkmenistan	231350	0.2	-	-	-
Uzbekistan	9577	0.0	-	-	-
Egypt	739170	0.5	19900	0.0	75
Albania	111912	0.1	2626	0.0	-
Bulgaria	107066	0.1	29581	0.0	9
Hungary	249164	0.2	32205	0.0	148
Poland	643352	0.5	359071	0.3	289
Romania	516003	0.4	1014	0.0	711
Estonia	78443	0.1	1859	0.0	-
Latvia	72121	0.1	9241	0.0	-
Lithuania	59538	0.0	-3115	0.0	2372
Georgia	186190	0.1	26810	0.0	-
Armenia	24572	0.0	2225	0.0	-
Azerbaijan	286700	0.2	256400	0.2	-
Belarus	127640	0.1	3390	0.0	824
Moldova	21384	0.0	807	0.0	-
Russian federation	2528403	1.8	3603184	2.5	2384
Ukraine	220200	0.2	800	0.0	2707
Slovenia	70200	0.1	10655	0.0	37
Croatia	210425	0.2	64362	0.1	-
Czech	741216	0.5	162347	0.1	797
Slovakia	227671	0.2	34951	0.0	44
Macedonia	25634	0.0	-178	0.0	-
Bosnia and Herzegovina	42517	0.0	4241	0.0	-
Serbia	286672	0.2	14565	0.0	7
Montenegro	54587	0.0	1140	0.0	-

Source: UNCTAD World Investment Report 2018 & MOFCOM FDI Statistics

Appendix 22 FDI Flows of Countries Along the Belt and Road in 2017

Unit: US\$10,000

Countries	FDI Inflow	Share of Global FDI Inflows%	FDI Outflow	Share of Global FDI Outflows%	Investment in China
Countries Along the Belt and Road	31534112	22.1	26010096	18.2	543360
Afghanistan	5394	0.0	1	0.0	73
Bahrain	51888	0.0	22899	0.0	30
The People's Republic of Bangladesh	215156	0.2	16983	0.0	10
Brunei	-4630	-0.0	-8470	0.0	2573
Myanmar	434100	0.3	-	-	170
Cambodia	278437	0.2	25903	0.0	1505
India	3991609	2.8	1130435	0.8	15772
Indonesia	2306311	1.6	291171	0.2	4076
Iran	501900	0.4	-	-	-
Iraq	-503240	-0.4	7780	0.0	182
Israel	1895400	1.3	627530	0.4	773
Jordan	166479	0.1	662	0.0	19
Kuwait	30053	0.0	811239	0.6	1474
Laos	81303	0.1	2988	0.0	1082
Lebanon	262796	0.2	56733	0.0	19
Malaysia	954345	0.7	579182	0.4	10836
Maldives	51749	0.0	-	-	-
Mongolia	149435	0.1	4861	0.0	308
Federal Democratic Republic of Nepal	19800	0.0	-	-	1
Oman	186740	0.1	39603	0.0	599
Pakistan	280600	0.2	6700	0.0	99
Palestine	20320	0.0	-1860	0.0	73
The Philippines	952428	0.7	161398	0.1	500
Qatar	98599	0.1	169478	0.1	-
Saudi Arabia	142100	0.1	562500	0.4	1493
Singapore	6200597	4.3	2468157	1.7	476318
Sri Lanka	137490	0.1	7153	0.0	22
Syria	-	-	-	-	934
Thailand	763525	0.5	1928314	1.4	11023
Turkey	1086400	0.8	263000	0.2	674
The United Arab Emirates	1035422	0.7	1395550	1.0	1357
Yemen	-26985	0.0	560	0.0	33

Appendix 21 Investment in China by Top 5 FDI Outflow Countries/Regions, EU and ASEAN in 2017

Unit:US\$ 100 million

Country/Region	FDI Outflow	Global share %	Investment in China in 2017	Share in FDI in China%	Share in its FDI Outflow %
United States	3422.7	23.9	26.5	1.9	0.8
Japan	1604.5	11.2	32.6	2.4	2.0
United Kingdom	996.1	7.0	10.0	0.7	1.0
Hong Kong, China	828.4	5.8	945.1	69.3	-
Germany	823.4	5.8	15.4	1.1	1.9
European Union	4357.4	30.5	82.9	6.1	1.9
ASEAN	550.3	3.9	50.8	3.7	9.2

Sources: UNCTAD World Investment Report 2018 & MOFCOM FDI Statistics

Notes: China's FDI outflow ranked third in 2017.

Sector/Industry	No. of FIEs	Change%	Realized FDI Value	Change%
Thermal Power Generation	6	0.0	2.3	42.6
Hydro Power Generation	9	350.0	0.7	928.6
Other Power Industries	226	29.9	12.1	0.0
Production and Supply of Gas	24	0.0	9.5	2018.8
Production and Supply of Running Water	5	-44.4	3.7	750.0
Construction	633	136.2	26.2	5.7
Housing and Civil Engineering Construction	76	65.2	8.1	102.9
Building and Civil Engineering Industry	110	52.8	15.6	-21.0
Construction of Railway,Highway,Tunnel and Bridge	62	148.0	11.3	-25.1
Irrigation and Port Engineering Construction	13	160.0	0.7	-21.9
Wholesale, Retailing	12283	30.7	114.8	-27.7
Transport, Warehousing and Post	517	21.7	55.9	9.8
Accommodation and Restaurants	703	13.4	4.2	14.8
Tourism&Hotel	107	1428.6	1.4	105.6
Information Transmission, Software and Information Technology Services	3169	116.6	209.2	147.8
Finance	1752	-29.5	132.0	-26.7
Real Estate	737	95.0	168.6	-14.2
Property Development and Operation	409	212.2	154.0	-16.8
Lease and Business Service	5087	9.9	167.4	3.8
Scientific Research, Technology Service and Geological Prospecting	3391	38.8	68.4	5.0
Water conservancy, Environment and Public Facilities Management	156	60.8	5.7	35.1
Resident Service and other Service	349	42.5	5.7	15.7
Education	203	111.5	0.8	-17.9
Health Care,Social Security &Social Welfare	114	48.1	3.1	20.1
Culture and Sports and Entertainment	476	28.3	7.0	161.3
Public Administration, Social Security and Social Organization	2	-	0.3	-

Sources: MOFCOM FDI Statistics

Appendix 20 Reference Data on FDI Distribution in Major Sectors in 2017

Unit: US\$100 million

Sector/Industry	No. of FIEs	Change%	Realized FDI Value	Change%
Total	35662	27.8	1363.2	4.0
Agriculture, Forestry, Animal Husbandry&Fishery	706	26.5	10.8	-43.4
Agriculture	451	32.7	3.5	-30.3
Grain Plantation	23	15.0	0.4	-15.3
Forestry	23	64.3	0.3	-77.4
Animal Husbandry	40	-4.8	3.8	-59.7
Fishery	65	22.6	0.3	-59.7
Mining	26	0.0	13.0	1251.4
Petroleum and Natural Gas Exploration	5	0.0	11.8	6003.2
Manufacturing	4986	24.3	335.1	-5.6
Agricultural Non-staple Products Processing	131	-3.0	5.0	-27.9
Grain Milling	4	100.0	0.1	-48.1
Slaughtering and Meat Processing	20	25.0	0.7	-71.1
Aqua-products Processing	38	8.6	0.8	-24.4
Petroleum Refining & Oil Production	7	-46.2	4.5	81.4
Chemical Raw Materials & Products Manufacturing	241	19.3	23.8	6.5
Synthetic Materials Manufacturing	47	17.5	4.5	-2.3
Non-metal Mineral Products Processing	236	34.1	11.8	-32.6
Cement Production	1	-50.0	0.3	-87.7
Light Building Materials Production	14	133.3	0.5	-4.9
Tile,Stone &other Building Materials Manufacturing	109	41.6	3.2	5.1
Glass and Glass Products Manufacturing	4	33.3	0.3	-60.9
Plate Glass Manufacturing	4	33.3	0.3	-60.9
Ceramics Production Manufacturing	26	30.0	0.4	46.1
Ceramics Production for Construction Manufacturing	4	100.0	0.1	-58.1
General Equipment Manufacturing	574	57.7	28.9	-0.6
Transport Equipment Manufacturing	40	0.0	5.8	140.5
Telecommunication,Computer and other Electronic Equipment Manufacturing	576	25.0	59.0	2.6
Computer Manufacturing	43	-14.0	3.7	65.7
Telecommunications Equipment Manufacturing	25	13.6	2.6	189.0
Electronic Equipment Manufacturing	155	52.0	16.6	-47.4
Production and Supply of Electricity, Gas& Water	372	19.6	35.2	64.0
Production and Supply of Electricity&thermodynamic	263	23.5	17.5	1.4
Power Generation	241	31.7	15.3	5.4

Appendix 18 Investment from BRICS, 2010-2017

Unit: US\$ 10,000

Year	No. of FIEs			Realized FDI Value		
	BRICS	National Total	Share %	BRICS	National Total	Share %
2010	207	27420	0.8	20800	11473424	0.2
2011	224	27717	0.8	12946	12398500	0.1
2012	194	24934	0.8	14763	12107314	0.1
2013	163	22819	0.7	8509	12391120	0.1
2014	212	23794	0.9	12563	12850156	0.1
2015	294	26584	1.1	14674	13557660	0.1
2016	397	27908	1.4	10729	13371142	0.1
2017	568	35662	1.6	28902	13631513	0.2

Sources: MOFCOM FDI Statistics

Appendix 19 Investment from Countries along the Belt and Road, 1987-2017

Unit: US\$ 10,000

Year	No. of FIEs			Realized FDI Value		
	B&R	National Total	Share %	B&R	National Total	Share %
2013	1661	22819	7.3	866360	12391120	7.0
2014	1808	23794	7.6	660050	12850156	5.1
2015	2154	26584	8.1	824705	13557660	6.1
2016	2886	27908	10.3	678715	13371142	5.1
2017	3827	35662	10.7	543360	13631513	4.0

Sources: MOFCOM FDI Statistics

Appendix 17 Investment from ASEAN, 1987-2017

Unit: US\$ 10,000

Year	No. of FIEs			Realized FDI Value		
	ASEAN	National Total	Share %	ASEAN	National Total	Share %
1987	82	2233	3.7	3680	231353	1.6
1988	171	5945	2.9	3917	319368	1.2
1989	133	5779	2.3	10011	339257	3.0
1990	128	7273	1.8	6046	348711	1.7
1991	303	12978	2.3	8782	436634	2.0
1992	1601	48764	3.3	27872	1100751	2.5
1993	3613	83437	4.3	102169	2751495	3.7
1994	2638	47549	5.5	189478	3376650	5.6
1995	2146	37011	5.8	264548	3752053	7.1
1996	1434	24556	5.8	318549	4172552	7.6
1997	1261	21001	6.0	342800	4525704	7.6
1998	1002	19799	5.1	422318	4546275	9.3
1999	931	16918	5.5	328877	4031871	8.2
2000	1090	22347	4.9	284458	4071481	7.0
2001	1239	26140	4.7	298395	4687759	6.4
2002	1759	34171	5.1	325594	5274286	6.2
2003	2302	41081	5.6	292543	5350467	5.5
2004	2438	43664	5.6	304053	6062998	5.0
2005	2342	44019	5.3	310543	7240569	4.3
2006	2186	41496	5.3	364286	7271500	5.0
2007	1922	37892	5.1	439124	8352089	5.3
2008	1323	27537	4.8	546099	10831244	5.0
2009	1047	23442	4.5	467820	9406467	5.0
2010	1217	27420	4.4	632368	11473424	5.5
2011	1174	27717	4.2	700478	12398500	5.6
2012	1056	24934	4.2	707299	12107314	5.8
2013	1037	22819	4.5	834734	12391120	6.7
2014	1076	23794	4.5	629976	12850156	4.9
2015	1145	26584	4.3	765772	13557660	5.6
2016	1142	27908	4.1	653124	13371142	4.9
2017	1261	35662	3.5	508436	13631513	3.7

Sources: MOFCOM FDI Statistics

Appendix 16 Investment from European Union, 1987-2017

Unit: US\$ 10,000

Year	No. of FIEs			Realized FDI Value		
	EU	National Total	Share %	EU	National Total	Share %
1987	40	2233	1.8	5271	231353	2.3
1988	87	5945	1.5	15727	319368	4.9
1989	78	5779	1.4	18761	339257	5.5
1990	82	7273	1.1	14735	348711	4.2
1991	163	12978	1.3	24562	436634	5.6
1992	763	48764	1.6	24297	1100751	2.2
1993	1726	83437	2.1	67124	2751495	2.4
1994	1464	47549	3.1	153769	3376650	4.6
1995	1582	37011	4.3	213131	3752053	5.7
1996	1167	24556	4.8	273706	4172552	6.6
1997	1040	21001	5.0	417115	4525704	9.2
1998	1002	19799	5.1	397869	4546275	8.8
1999	894	16918	5.3	447906	4031871	11.1
2000	1130	22347	5.1	447946	4071481	11.0
2001	1214	26140	4.6	418270	4687759	8.9
2002	1486	34171	4.4	370982	5274286	7.0
2003	2074	41081	5.1	393031	5350467	7.4
2004	2423	43664	5.6	423904	6062998	7.0
2005	2846	44019	6.5	519378	7240569	7.2
2006	2619	41496	6.3	543947	7271500	7.5
2007	2487	37892	6.6	394529	8352089	4.7
2008	1929	27537	7.0	511526	10831244	4.7
2009	1510	23442	6.4	512233	9406467	5.5
2010	1598	27420	5.8	556883	11473424	4.9
2011	1665	27717	6.0	526695	12398500	4.3
2012	1605	24934	6.4	534536	12107314	4.4
2013	1446	22819	6.3	651793	12391120	5.3
2014	1499	23794	6.3	622672	12850156	4.9
2015	1704	26584	6.4	651285	13557660	4.8
2016	1680	27908	6.0	879992	13371142	6.6
2017	1817	35662	5.1	828811	13631513	6.1

Sources: MOFCOM FDI Statistics

Appendix 15 Investment from United States, 1987-2017

Unit: US\$ 10,000

Year	No. of FIEs			Realized FDI Value		
	United States	National Total	Share %	United States	National Total	Share %
1987	104	2233	4.7	26280	231353	11.4
1988	269	5945	4.5	23596	319368	7.4
1989	276	5779	4.8	28427	339257	8.4
1990	357	7273	4.9	45599	348711	13.1
1991	694	12978	5.4	32320	436634	7.4
1992	3265	48764	6.7	51105	1100751	4.6
1993	6750	83437	8.1	206312	2751495	7.5
1994	4223	47549	8.9	249080	3376650	7.4
1995	3474	37011	9.4	308301	3752053	8.2
1996	2517	24556	10.3	344333	4172552	8.3
1997	2188	21001	10.4	323915	4525704	7.2
1998	2238	19799	11.3	389844	4546275	8.6
1999	2028	16918	12.0	421586	4031871	10.5
2000	2609	22347	11.7	438389	4071481	10.8
2001	2606	26140	10.0	443322	4687759	9.5
2002	3363	34171	9.8	542392	5274286	10.3
2003	4060	41081	9.9	419851	5350467	7.9
2004	3925	43664	9.0	394095	6062998	6.5
2005	3741	44019	8.5	306123	7240569	4.2
2006	3205	41496	7.7	299995	7271500	4.1
2007	2627	37892	6.9	261623	8352089	3.1
2008	1772	27537	6.4	294434	10831244	2.7
2009	1530	23442	6.5	255499	9406467	2.7
2010	1502	27420	5.5	301734	11473424	2.6
2011	1426	27717	5.1	236932	12398500	1.9
2012	1301	24934	5.2	259809	12107413	2.2
2013	1061	22819	4.7	281987	12391120	2.3
2014	1176	23794	4.9	237074	12850156	1.8
2015	1241	26584	4.7	208889	13557660	1.5
2016	1238	27908	4.4	238601	13371142	1.8
2017	1346	35662	3.8	264905	13631513	1.9

Sources: MOFCOM FDI Statistics

Appendix 14 Investment from Korea, 1987-2017

Unit: US\$ 10,000

Year	No. of FIEs			Realized FDI Value		
	South Korea	National Total	Share %	South Korea	National Total	Share %
1992	650	48764	1.3	11948	1100751	1.1
1993	1748	83437	2.1	37381	2751495	1.4
1994	1849	47549	3.9	72283	3376650	2.1
1995	1975	37011	5.3	104289	3752053	2.8
1996	1895	24556	7.7	135752	4172552	3.3
1997	1753	21001	8.4	214238	4525704	4.7
1998	1309	19799	6.6	180320	4546275	4.0
1999	1547	16918	9.1	127473	4031871	3.2
2000	2565	22347	11.5	148961	4071481	3.7
2001	2909	26140	11.1	215178	4687759	4.6
2002	4008	34171	11.7	272073	5274286	5.2
2003	4920	41081	12.0	448854	5350467	8.4
2004	5625	43664	12.9	624786	6062998	10.3
2005	6115	44019	13.9	516834	7240569	7.1
2006	4262	41496	10.3	399319	7271500	5.5
2007	3452	37892	9.1	367831	8352089	4.4
2008	2226	27537	8.1	313532	10831244	2.9
2009	1669	23442	7.1	270007	9406467	2.9
2010	1695	27420	6.2	269217	11473424	2.4
2011	1375	27717	5.0	255107	12398500	2.1
2012	1306	24934	5.2	303800	12107314	2.5
2013	1371	22819	6.0	305421	12391120	2.5
2014	1558	23794	6.6	396564	12850156	3.1
2015	1958	26584	7.4	403401	13557660	3.0
2016	2018	27908	7.2	475112	13371142	3.6
2017	1627	35662	4.6	367253	13631513	2.7

Sources: MOFCOM FDI Statistics

Appendix 13 Investment from Singapore, 1987-2017

Unit: US\$ 10,000

Year	No. of FIEs			Realized FDI Value		
	Singapore	National Total	Share %	Singapore	National Total	Share %
1987	53	2233	2.4	2163	231353	0.9
1988	105	5945	1.8	2782	319368	0.9
1989	78	5779	1.4	8414	339257	2.5
1990	72	7273	1.0	5043	348711	1.5
1991	169	12978	1.3	5821	436634	1.3
1992	742	48764	1.5	12231	1100751	1.1
1993	1751	83437	2.1	49004	2751495	1.8
1994	1443	47549	3.0	117961	3376650	3.5
1995	1279	37011	3.5	185122	3752053	4.9
1996	851	24556	3.5	224356	4172552	5.4
1997	734	21001	3.5	260641	4525704	5.8
1998	566	19799	2.9	340397	4546275	7.5
1999	503	16918	3.0	264249	4031871	6.6
2000	622	22347	2.8	217220	4071481	5.3
2001	675	26140	2.6	214355	4687759	4.6
2002	930	34171	2.7	233720	5274286	4.4
2003	1144	41081	2.8	205840	5350467	3.9
2004	1279	43664	2.9	200814	6062998	3.3
2005	1217	44019	2.8	220432	7240569	3.0
2006	1189	41496	2.9	246300	7271500	3.4
2007	1059	37892	2.8	318457	8352089	3.8
2008	757	27537	2.8	443529	10831244	4.1
2009	640	23442	2.7	360484	9406467	3.8
2010	781	27420	2.9	542820	11473424	4.7
2011	740	27717	2.7	609681	12398500	4.9
2012	698	24934	2.8	630508	12107314	5.2
2013	731	22819	3.2	722872	12391120	5.8
2014	757	23794	3.2	582668	12850156	4.5
2015	762	26584	2.9	690407	13557660	5.1
2016	684	27908	2.5	604668	13371142	4.5
2017	706	35662	2.2	476318	13631513	3.5

Sources: MOFCOM FDI Statistics

Appendix 12 Investment from Japan, 1987-2017

Unit: US\$ 10,000

Year	No. of FIEs			Realized FDI Value		
	Japan	National Total	Share %	Japan	National Total	Share %
1987	113	2233	5.1	21970	231353	9.5
1988	237	5945	4.0	51453	319368	16.1
1989	294	5779	5.1	35634	339257	10.5
1990	341	7273	4.7	50338	348711	14.4
1991	599	12978	4.6	53250	436634	12.2
1992	1805	48764	3.7	70983	1100751	6.5
1993	3488	83437	4.2	132410	2751495	4.8
1994	3018	47549	6.4	207529	3376650	6.2
1995	2946	37011	8.0	310846	3752053	8.3
1996	1742	24556	7.1	367935	4172552	8.8
1997	1402	21001	6.7	432647	4525704	9.6
1998	1198	19799	6.1	340036	4546275	7.5
1999	1167	16918	6.9	297308	4031871	7.4
2000	1614	22347	7.2	291585	4071481	7.2
2001	2019	26140	7.7	434842	4687759	9.3
2002	2745	34171	8.0	419009	5274286	7.9
2003	3254	41081	7.9	505419	5350467	9.5
2004	3454	43664	7.9	545157	6062998	9.0
2005	3269	44019	7.4	652977	7240569	9.0
2006	2590	41496	6.2	475941	7271500	6.6
2007	1974	37892	5.2	358922	8352089	4.3
2008	1438	27537	5.2	365235	10831244	3.4
2009	1275	23442	5.4	410497	9406467	4.4
2010	1762	27420	6.4	408372	11473424	3.6
2011	1859	27717	6.7	632963	12398500	5.1
2012	1579	24934	6.3	735156	12107314	6.1
2013	943	22819	4.1	705817	12391120	5.7
2014	653	23794	2.7	432530	12850156	3.4
2015	643	26584	2.4	319496	13557660	2.4
2016	576	27908	2.1	309585	13371142	2.3
2017	590	35662	1.7	326100	13631513	2.4

Sources: MOFCOM FDI Statistics

Appendix 11 Investment from Taiwan Province of China, 1990-2017

Unit: US\$ 10,000

Year	No. of FIEs			Realized FDI Value		
	Taiwan Province of China	National Total	Share %	Taiwan Province of China	National Total	Share %
1990	1103	7273	15.2	22240	348711	6.4
1991	1735	12978	13.4	46641	436634	10.7
1992	6430	48764	13.2	105050	1100751	9.5
1993	10948	83437	13.1	313859	2751495	11.4
1994	6247	47549	13.1	339104	3376650	10.0
1995	4847	37011	13.1	316155	3752053	8.4
1996	3184	24556	13.0	347484	4172552	8.3
1997	3014	21001	14.4	328939	4525704	7.3
1998	2970	19799	15.0	291521	4546275	6.4
1999	2499	16918	14.8	259870	4031871	6.5
2000	3108	22347	13.9	229628	4071481	5.6
2001	4214	26140	16.1	297994	4687759	6.4
2002	4853	34171	14.2	397064	5274286	7.5
2003	4495	41081	10.9	337724	5350467	6.3
2004	4002	43664	9.2	311749	6062998	5.1
2005	3907	44019	8.9	215171	7240569	3.0
2006	3752	41496	9.0	222990	7271500	3.1
2007	3299	37892	8.7	177437	8352089	2.1
2008	2360	27537	8.6	189868	10831244	1.8
2009	2555	23442	10.9	188055	9406467	2.0
2010	3072	27420	11.2	247574	11473424	2.2
2011	2639	27717	9.5	218343	12398500	1.8
2012	2229	24934	8.9	284707	12107314	2.4
2013	2017	22819	8.8	208771	12391120	1.7
2014	2318	23794	9.7	201812	12850156	1.6
2015	2962	26584	11.1	153710	13557660	1.1
2016	3517	27908	12.6	196280	13371142	1.5
2017	3464	35662	9.7	177247	13631513	1.3

Sources: MOFCOM FDI Statistics

Appendix 10 Investment from Hong Kong, China, 1987-2017

Unit: US\$ 10,000

Year	No. of FIEs			Realized FDI Value		
	Hong Kong, China	National Total	Share %	Hong Kong, China	National Total	Share %
1987	1721	2233	77.1	158794	231353	68.6
1988	4562	5945	76.7	206760	319368	64.7
1989	4072	5779	70.5	203690	339257	60.0
1990	4751	7273	65.3	188000	348711	53.9
1991	8502	12978	65.5	240525	436634	55.1
1992	30781	48764	63.1	750707	1100751	68.2
1993	49134	83437	58.9	1727475	2751495	62.8
1994	24622	47549	51.8	1966544	3376650	58.2
1995	17186	37011	46.4	2006037	3752053	53.5
1996	10397	24556	42.3	2067732	4172552	49.6
1997	8405	21001	40.0	2063200	4525704	45.6
1998	7805	19799	39.4	1850836	4546275	40.7
1999	5902	16918	34.9	1636305	4031871	40.6
2000	7199	22347	32.2	1549998	4071481	38.1
2001	8008	26140	30.6	1671730	4687759	35.7
2002	10845	34171	31.7	1786093	5274286	33.9
2003	13633	41081	33.2	1770010	5350467	33.1
2004	14719	43664	33.7	1899830	6062998	31.3
2005	14831	44019	33.7	1794879	7240569	24.8
2006	15496	41496	37.3	2130718	7271500	29.3
2007	16208	37892	42.8	2770342	8352089	33.2
2008	12857	27537	46.7	4103640	10831244	37.9
2009	10701	23442	45.7	4607547	9406467	49.0
2010	13070	27420	47.7	6056677	11473424	52.8
2011	13889	27717	50.1	7050016	12398500	56.9
2012	12604	24934	50.6	6556119	12107314	54.2
2013	12014	22819	52.7	7339667	12391120	59.2
2014	12169	23794	51.1	8126820	12850156	63.2
2015	13146	26584	49.5	8638672	13557660	63.7
2016	12753	27908	45.7	8146508	13371142	60.9
2017	18066	35662	50.7	9450901	13631513	69.3

Sources: MOFCOM FDI Statistics

Appendix 9 Statistics of FDI from Selected Countries/Regions as of 2017

Unit: US\$100 million

Country/Region	No. of FIEs	Share %	Realized Value	Share %
Total	900165	100	20109.3	100
10 Asian Countries/Regions	689176	76.6	13782.4	68.5
Hong Kong, China	417032	46.3	10093.0	50.2
Indonesia	1937	0.2	25.8	0.1
Japan	51006	5.7	1081.8	5.4
Macau, China	15917	1.8	142.4	0.7
Malaysia	6362	0.7	75.8	0.4
Philippines	2973	0.3	33.1	0.2
Singapore	23871	2.7	900.3	4.5
Republic of Korea	63385	7.0	723.7	3.6
Thailand	4414	0.5	42.2	0.2
Taiwan Province of China	102279	11.4	664.3	3.3
European Union	42111	4.7	1185.9	5.9
Belgium	1040	0.1	18.1	0.1
Denmark	992	0.1	40.4	0.2
United Kingdom	8844	1.0	220.6	1.1
Germany	9781	1.1	297.2	1.5
France	5406	0.6	165.2	0.8
Ireland	390	0.0	18.3	0.1
Italy	5818	0.7	70.8	0.4
Luxembourg	472	0.1	50.8	0.3
Netherlands	3310	0.4	182.2	0.9
Greece	156	0.0	1.0	0.0
Portugal	234	0.0	2.1	0.0
Spain	2392	0.3	36.6	0.2
Austria	1259	0.1	20.0	0.1
Finland	562	0.1	14.1	0.1
Sweden	1455	0.2	48.5	0.2
North America	82813	9.2	929.4	4.6
Canada	14382	1.6	104.4	0.5
United States	68431	7.6	825.1	4.1
Some Free Ports	38961	4.3	2439.5	12.1
Mauritius	2451	0.3	145.2	0.7
Barbados	314	0.0	45.8	0.2
Cayman Islands	3386	0.4	375.0	1.9
British Virgin Islands	24166	2.7	1599.0	8.0
Samoa	8644	1.0	274.4	1.4
Others	47104	5.2	1772.2	8.8

Source: UNCTAD World Investment Report 2018

Appendix 8 Statistics of FDI from Selected Countries/Regions in 2017

Unit: US\$10,000

Country/Region	No. of FIEs	Share %	Realized Value	Share %
Total	35662	100	13631513	100
10 Asian Countries/Regions	25792	72.3	10887992	79.9
Hong Kong, China	18066	50.7	9450901	69.3
Indonesia	51	0.1	4076	0.0
Japan	590	1.7	326100	2.4
Macau, China	843	2.4	63738	0.5
Malaysia	329	0.9	10836	0.1
Philippines	35	0.1	500	0.0
Singapore	706	2.0	476318	3.5
Republic of Korea	1627	4.6	367253	2.7
Thailand	81	0.2	11023	0.1
Taiwan Province of China	3464	9.7	177247	1.3
European Union	1697	4.8	822966	6.0
Belgium	34	0.1	14759	0.1
Denmark	57	0.2	81947	0.6
United Kingdom	393	1.1	100333	0.7
Germany	387	1.1	154163	1.1
France	209	0.6	79018	0.6
Ireland	38	0.1	14881	0.1
Italy	201	0.6	19482	0.1
Luxembourg	25	0.1	59587	0.4
Netherlands	122	0.3	217398	1.6
Greece	14	0.0	85	0.0
Portugal	12	0.0	1499	0.0
Spain	100	0.3	14246	0.1
Austria	42	0.1	9488	0.1
Finland	21	0.1	5385	0.0
Sweden	42	0.1	50695	0.4
North America	1805	5.1	294174	2.2
Canada	459	1.3	29269	0.2
United States	1346	3.8	264905	1.9
Some Free Ports	685	1.9	912393	6.7
Mauritius	15	0.0	34368	0.3
Barbados	0	0.0	4103	0.0
Cayman Islands	105	0.3	217690	1.6
British Virgin Islands	309	0.9	399076	2.9
Samoa	6	0.0	134213	1.0
Others	250	0.7	122943	0.9
Total	5683	15.9	713988	5.2

Source: UNCTAD World Investment Report 2018

Appendix 7 Top 15 Investors of China as of 2017

Unit: US\$ 100 million

Country/Region	No. of FIEs	Share %	Realized FDI Value	Share %
Total	900165	100	20109.3	100.0
Hong Kong, China	417032	46.3	10093.0	50.2
British Virgin Islands	24166	2.7	1599.0	8.0
Japan	51006	5.7	1081.8	5.4
Singapore	23871	2.7	900.3	4.5
United States	68431	7.6	825.1	4.1
South Korea	63385	7.0	723.7	3.6
Taiwan Province of China	102279	11.4	664.3	3.3
Cayman Islands	3386	0.4	375.0	1.9
Germany	9781	1.1	297.2	1.5
Samoa	8644	1.0	274.4	1.4
United Kingdom	8844	1.0	220.6	1.1
Netherlands	3310	0.4	182.2	0.9
France	5406	0.6	165.2	0.8
Mauritius	2451	0.3	145.2	0.7
Macau, China	15917	1.8	142.4	0.7
others	92256	10.3	2420.0	12.0

Sources: MOFCOM FDI Statistics

Appendix 6 Total Imports and Exports by FIEs, 1986-2017

Unit: US\$ 100 million

Year	Imports and Exports			Imports			Exports		
	National	FIEs	Share%	National	FIEs	Share%	National	FIEs	Share%
1986	738.5	29.9	4.0	429.0	24.0	5.6	309.4	5.8	1.9
1987	826.5	45.8	5.5	432.2	33.7	7.8	394.4	12.1	3.1
1988	1027.8	83.4	8.1	552.7	58.8	10.6	475.2	24.6	5.2
1989	1116.8	137.1	12.3	591.4	88.0	14.9	525.4	49.1	9.4
1990	1154.4	201.2	17.4	533.5	123.0	23.1	620.9	78.1	12.6
1991	1357.0	289.6	21.3	637.9	169.1	26.5	719.1	120.5	16.8
1992	1655.3	437.5	26.4	805.9	263.9	32.7	849.4	173.6	20.4
1993	1957.0	670.7	34.3	1039.6	418.3	40.2	917.4	252.4	27.5
1994	2366.2	876.5	37.0	1156.2	529.3	45.8	1210.1	347.1	28.7
1995	2808.5	1098.2	39.1	1320.8	629.4	47.7	1487.7	468.8	31.5
1996	2899.0	1371.1	47.3	1388.4	756.0	54.5	1510.7	615.1	40.7
1997	3250.6	1526.2	47.0	1423.6	777.2	54.6	1827.0	749.0	41.0
1998	3239.2	1576.8	48.7	1401.7	767.2	54.7	1837.6	809.6	44.1
1999	3606.5	1745.1	48.4	1657.2	858.8	51.8	1949.3	886.3	45.5
2000	4743.1	2367.1	49.9	2251.0	1172.7	52.1	2492.1	1194.4	47.9
2001	5097.7	2591.0	50.8	2436.1	1258.6	51.7	2661.6	1332.4	50.1
2002	6207.9	3302.2	53.2	2952.2	1602.9	54.3	3255.7	1699.4	52.2
2003	8512.1	4722.6	55.5	4128.4	2319.1	56.2	4383.7	2403.4	54.8
2004	11547.9	6631.6	57.4	5614.2	3245.6	57.8	5933.7	3386.1	57.1
2005	14221.2	8317.2	58.5	6601.2	3875.1	58.7	7620.0	4442.1	58.3
2006	17606.9	10364.4	58.9	7916.1	4726.2	59.7	9690.7	5638.3	58.2
2007	21744.4	12568.5	57.8	9562.8	5609.5	58.7	12181.5	6959.0	57.1
2008	25616.3	14105.8	55.1	11330.9	6199.6	54.7	14285.5	7906.2	55.4
2009	22072.7	12174.4	55.2	10056.0	5452.1	54.2	12016.6	6722.3	55.9
2010	29727.6	16003.1	53.8	13948.3	7380.0	52.9	15779.3	8623.1	54.6
2011	36419.4	18601.6	51.1	17460.4	8648.3	49.5	18986.0	9953.3	52.4
2012	38675.1	18940.0	49.0	18174.0	8712.5	47.9	20501.1	10227.5	49.9
2013	41603.3	19190.9	46.1	19502.9	8748.2	44.9	22100.4	10442.7	47.3
2014	43030.0	19840.0	46.1	19603.0	9093.0	46.4	23427.0	10747.0	45.9
2015	39586.4	18346.0	46.3	16820.7	8299.0	49.3	22765.7	10047.0	44.1
2016	36855.6	16871.0	45.8	15879.3	7703.0	48.5	20976.3	9168.0	43.7
2017	41045.0	18391.4	44.8	18409.8	8615.8	46.8	22635.2	9775.6	43.2

Source: Customs Statistics

Appendix 5 Total Imports and Exports by FIEs in 2017

Unit: US\$ 100 Million

Month	Imports and Exports			Imports			Exports		
	National	FIEs	Share%	National	FIEs	Share%	National	FIEs	Share%
1	3121.5	1321	42.3	1316.4	583	44.3	1805.1	738	40.9
2	2485.0	1222	49.2	1297.3	624	48.1	1187.7	598	50.4
3	3355.5	1513	45.1	1565.2	715	45.7	1790.3	798	44.6
4	3188.9	1387	43.5	1412.9	646	45.7	1776.0	741	41.7
5	3382.4	1471	43.5	1492.1	697	46.7	1890.4	774	40.9
6	3483.6	1537	44.1	1534.9	717	46.7	1948.6	820	42.1
7	3392.3	1495	44.1	1470.6	689	46.9	1921.6	806	41.9
8	3554.5	1603	45.1	1573.8	762	48.4	1980.7	841	42.5
9	3678.5	1709	46.5	1699.6	830	48.8	1978.9	879	44.4
10	3385.4	1562	46.1	1506.5	717	47.6	1878.9	845	45.0
11	3928.5	1776	45.2	1769.3	830	46.9	2159.2	946	43.8
12	4089.1	1796	43.9	1771.1	806	45.5	2318.0	990	42.7
Whole year	41045.0	18392	44.8	18409.8	8616	46.8	22635.2	9776	43.2

Source: Customs Statistics, MOFCOM FDI Statistics

Appendix 4 Tax Revenue of FIEs, 1992-2017 (Excluding Customs Duty and Land Fees)

Unit: RMB 100 million

Year	National Tax Revenues	Growth Rate %	Tax Revenues of FIEs	Growth Rate %	Share %
1992	3084.2	-	122.3	-	4.0
1993	3998.8	29.7	226.6	85.3	5.7
1994	4854.2	21.4	402.6	77.7	8.3
1995	5746.2	18.4	604.5	50.1	10.5
1996	6608.0	15.0	764.1	26.4	11.6
1997	7914.6	19.8	993.0	30.0	12.6
1998	8949.8	13.1	1230.0	23.9	13.7
1999	10120.4	13.1	1648.9	34.1	16.3
2000	11831.0	16.9	2217.0	34.5	18.7
2001	14460.9	22.2	2883.0	30.0	19.9
2002	16932.2	17.1	3487.0	21.0	20.6
2003	19094.2	12.8	4268.0	22.4	22.4
2004	23121.9	21.1	5355.0	25.5	23.2
2005	27712.4	19.9	6391.3	19.4	23.1
2006	33662.6	21.5	7976.9	24.8	23.7
2007	44189.4	31.3	9972.6	25.0	22.6
2008	52453.8	18.7	12118.9	21.5	23.1
2009	58037.8	10.7	13615.2	12.4	23.5
2010	71183.0	22.7	16389.9	20.4	23.0
2011	87179.3	22.5	19638.1	19.8	22.5
2012	97830.4	12.2	21768.8	10.9	22.3
2013	107900.1	10.3	22574.9	3.7	20.9
2014	116331.9	7.8	24920.6	10.4	21.4
2015	124892.0	4.8	24817.2	-0.4	19.9
2016	140504.0	3.3	25659.2	3.4	18.3
2017	155739.3	10.8	29185.1	13.7	18.7

Sources: China Statistical Yearbook & relevant departments; national tax revenues of 2017 comes from State Administration of Taxation.

Appendix 3 Realized FDI as a Percentage of Total Investment in Fixed Assets, 1992-2017

Year	Total Investment in Fixed Assets		Realized FDI in US\$ 100 Million	Share in Fixed Asset Investment(%)
	(RMB 100 Million)	(USD Equivalent in \$ 100 Million)		
1992	8080.1	1465.2	110.1	7.5
1993	13072.3	2268.7	275.2	12.1
1994	17042.1	1977.3	337.7	17.1
1995	20019.3	2397.2	375.2	15.7
1996	22913.5	2756.0	417.3	15.1
1997	24941.1	3008.7	452.6	15.0
1998	28406.2	3431.1	454.6	13.3
1999	29854.7	3606.4	403.2	11.2
2000	32917.7	3976.3	407.2	10.2
2001	37213.5	4496.0	468.5	10.4
2002	43499.9	5255.5	527.4	10.0
2003	55566.6	6713.4	535.1	8.0
2004	70477.4	8515.1	606.3	7.1
2005	88773.6	10837.0	724.1	6.7
2006	109998.2	13798.4	727.2	5.3
2007	137323.9	18059.4	835.2	4.6
2008	172828.4	24884.9	1083.1	4.4
2009	224598.8	32879.3	940.7	2.9
2010	251683.8	37179.1	1147.3	3.1
2011	311485.1	48226.5	1239.9	2.6
2012	374694.7	59357.6	1210.7	2.0
2013	446294.1	72062.0	1239.1	1.7
2014	512020.7	83353.0	1285.0	1.5
2015	562000.0	90231.8	1355.8	1.5
2016	606466.0	91303.6	1337.1	1.5
2017	641238.0	94972.9	1363.2	1.4

Sources: China Statistical Yearbook & MOFCOM FDI Statistics; total investment in fixed assets of 2017 comes from the Statistical Communiqué of the People's Republic of China on the 2017 National Economic and Social Development.

Note: USD Equivalents are based on the average exchange rate of the year concerned.

Appendix 2 Growth Rate of Value-added of Industrial Enterprises and Foreign Invested Industrial Enterprises above the Designated Size, 1992-2017

Unit: RMB 100 million

Year	Total Value Added of Industrial Enterprises	Growth Rate%	Growth Rate% of Value Added of Foreign Invested Industrial Enterprises above Designated Size
1992	10341	21.0	48.8
1993	14249	20.0	46.2
1994	19547	18.8	28.0
1995	25024	14.0	19.0
1996	29530	12.5	13.1
1997	33024	11.3	13.4
1998	34135	8.9	12.7
1999	36015	8.6	12.9
2000	40260	9.9	14.6
2001	43856	8.7	11.9
2002	47776	10.0	13.3
2003	55364	12.8	20.0
2004	65777	11.6	18.8
2005	77961	11.6	16.6
2006	92238	12.9	16.9
2007	111694	14.9	17.5
2008	131728	10.0	9.9
2009	138096	9.1	6.2
2010	165126	12.6	14.5
2011	195143	10.9	10.4
2012	208906	8.1	6.3
2013	222338	7.7	8.3
2014	233856	7.0	6.3
2015	236506	6.0	3.7
2016	247860	6.0	4.5
2017	279997	6.4	6.6

Sources: Statistical Communiqué of the People's Republic of China on National Economic and Social Development of relevant years. Value added is calculated at current prices whereas growth rates are at constant prices.

Appendix:**Appendix 1 FDI Stock as of 2017**

Unit: US\$ 100 million

Year	No. of FIEs	Realized Value
Total	900165	20109.3
1979-1982	920	17.7
1983	638	9.2
1984	2166	14.2
1985	3073	19.6
1986	1498	22.4
1987	2233	23.1
1988	5945	31.9
1989	5779	33.9
1990	7273	34.9
1991	12978	43.7
1992	48764	110.1
1993	83437	275.2
1994	47549	337.7
1995	37011	375.2
1996	24556	417.3
1997	21001	452.6
1998	19799	454.6
1999	16918	403.2
2000	22347	407.2
2001	26140	468.8
2002	34171	527.4
2003	41081	535.1
2004	43664	606.3
2005	44019	724.1
2006	41496	727.2
2007	37892	835.2
2008	27537	1083.1
2009	23442	940.7
2010	27420	1147.3
2011	27717	1239.9
2012	24934	1210.7
2013	22819	1239.1
2014	23794	1285.0
2015	26584	1355.8
2016	27908	1337.1
2017	35662	1363.2

Sources: MOFCOM FDI Statistics

5.8. FDI Flows of BRICS

In 2017, FDI inflows of BRICS was US\$129.2 billion (excluding China), accounting for 9.0% of global FDI inflows. FDI outflows of BRICS was US\$53.4 billion, accounting for 3.7% of global FDI outflows, of which US\$290 million was invested in China. Brazil ranked first in FDI inflows, with an amount of US\$62.7 billion, while Russia ranked first in FDI outflows, with an amount of US\$36.0 billion.

Table 22 FDI Flows of BRICS in 2017

Unit: US\$100 million

Country/region	FDI Inflow	Share of Global FDI Inflows%	FDI Outflow	Share of Global FDI Outflows%	Investment in China
BRICS	1292.4	9.0	533.5	3.7	2.9
India	399.2	2.8	113.0	0.8	1.6
South Africa	13.3	0.1	73.6	0.5	0.7
Russia	252.8	1.8	360.3	2.5	0.2
Brazil	627.1	4.4	-13.5	-0.1	0.4

Source: UNCTAD World Investment Report 2018, MOFCOM FDI Statistics

5.9. FDI Flows of Developing Economies

In 2017, developing economies attained a net FDI inflow of US\$299.0 billion, of which FDI outflows accounted for 26.6% of the global FDI outflows and FDI inflows accounted for 46.9% of the global FDI inflows. Asia (mainly East Asia, South Asia and Southeast Asia) was the major region of FDI flows. The outflows from Asian developing countries accounted for 24.5% of global FDI outflows and inflows 33.3% of accounted for inflows.

Table 23 Net FDI Flows of Developing Economies in 2017

Unit: US\$100 million

Region	FDI Outflow		FDI Inflow		Net inflow
	Value	Global Share %	Value	Global Share %	
Developing economies	3807.8	26.6	6706.6	46.9	2898.8
Africa	120.8	0.8	417.7	2.9	296.9
Asia	3501.5	24.5	4758.4	33.3	1256.9
East, South an Southeast Asia	3168.7	22.2	4503.3	31.5	1334.7
West Asia	332.8	2.3	255.1	1.8	-77.8
Latin America and the Caribbean	173.3	1.2	1513.4	10.6	1340.1
Oceania	12.2	0.1	17.1	0.1	4.9
South-East Europe and the CIS	397.2	2.8	449.1	3.1	51.8

Source: UNCTAD World Investment Report 2018, MOFCOM FDI Statistics

In 2017, FDI outflows of countries along the Belt and Road was US\$206.1 billion, accounting for 18.2% of the global FDI outflows. The top 5 countries were Russia, with an amount of US\$26.0 billion FDI outflow; Singapore, with an amount of US\$24.7 billion FDI outflow; Thailand, with an amount of US\$19.3 billion FDI outflow; The United Arab Emirates, with an amount of US\$13.1 billion FDI outflow; and India, with an amount of US\$11.3 billion FDI outflow. (see Appendix 22 for details)

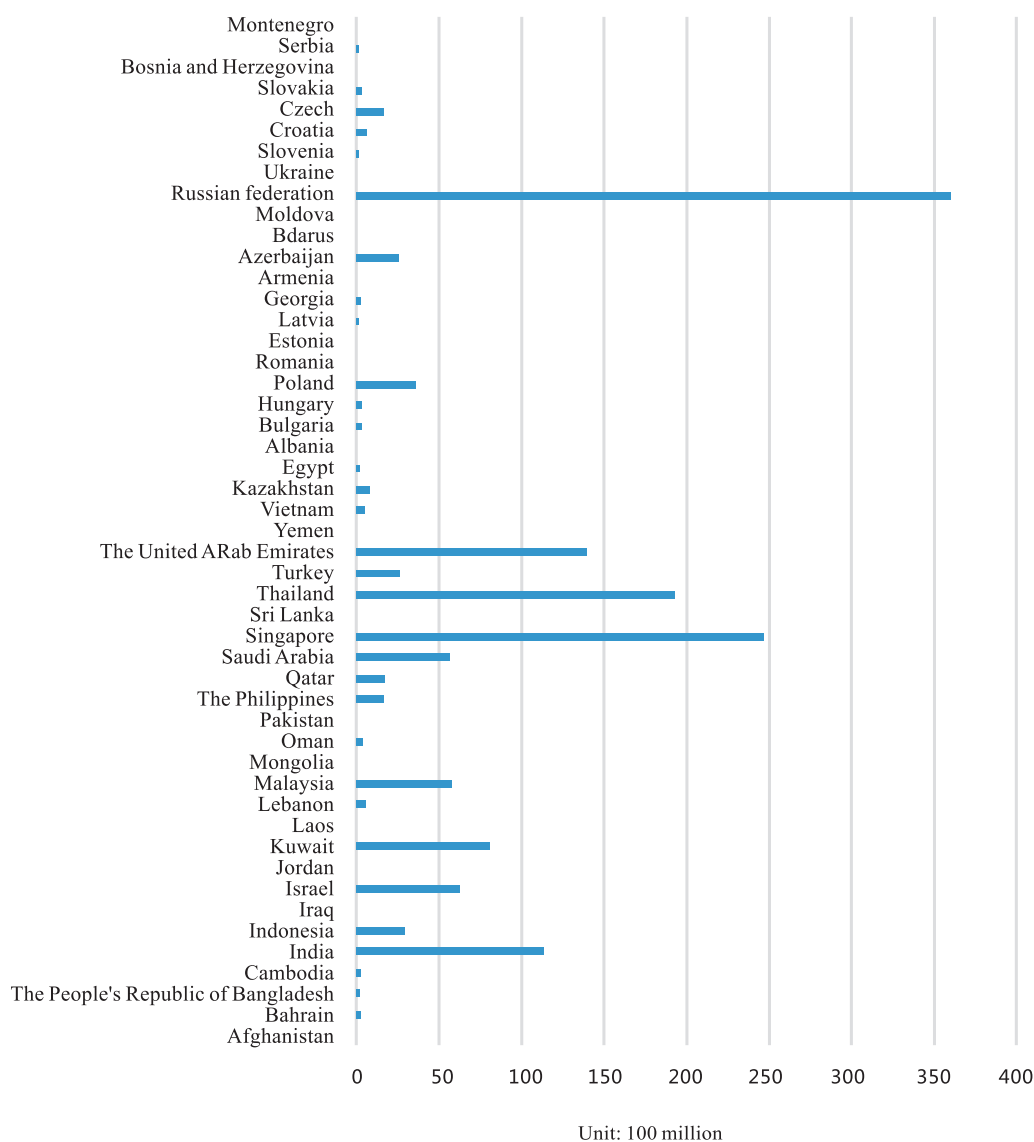


Figure 23 FDI Ourflows of Countries along the Belt and Road in 2017

Source: UNCTAD World Investment Report 2018, MOFCOM FDI Statistics

India, with an amount of US\$39.9 billion FDI inflow; Russia, with an amount of US\$25.3 billion FDI inflow; Israel, with an amount of US\$19.0 billion FDI inflow; and Vietnam, with an amount of US\$14.1 billion FDI inflow. (see Appendix 22 for details)

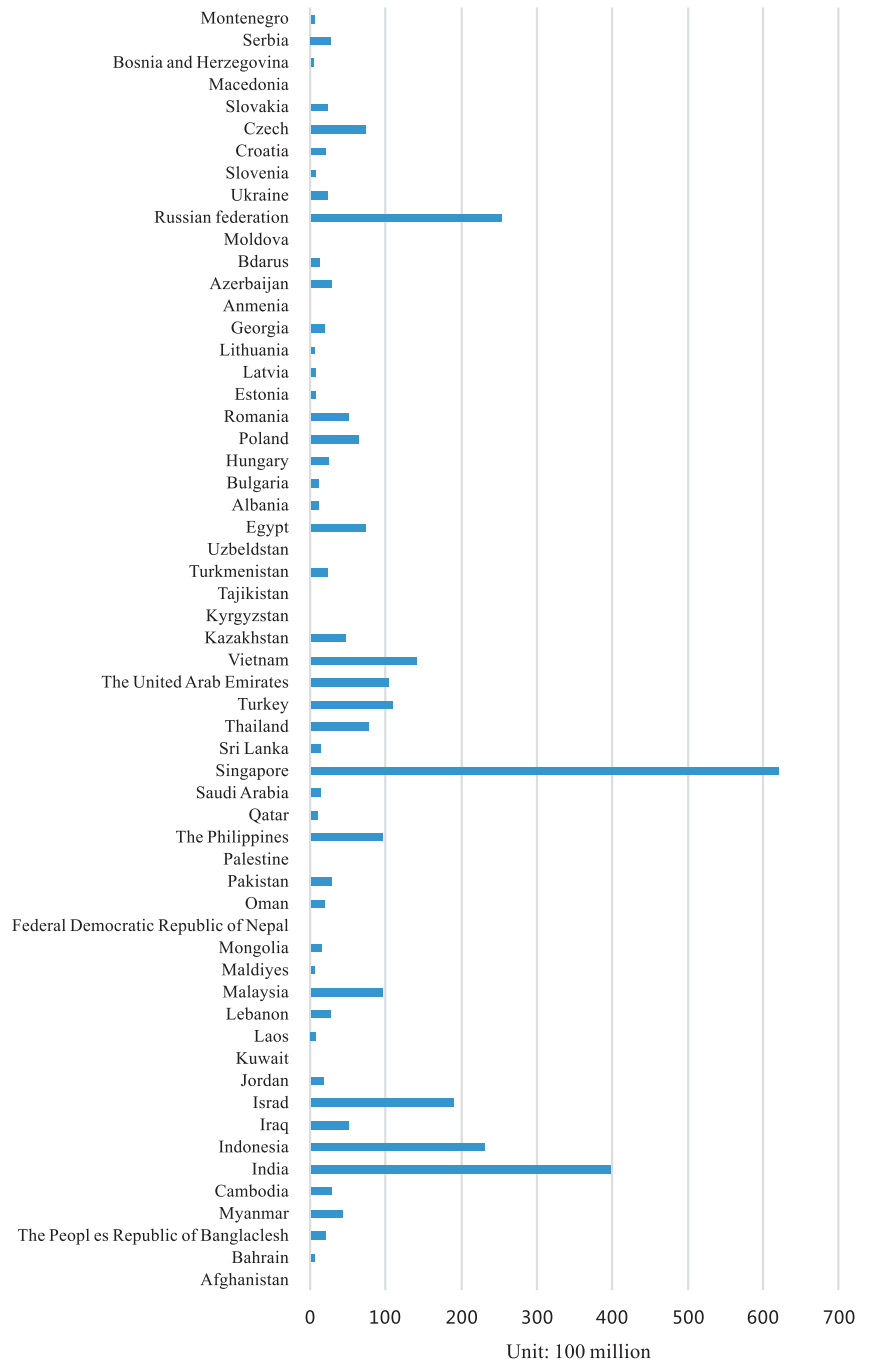


Figure 22 FDI Inflows of Countries along the Belt and Road in 2017

Source: UNCTAD World Investment Report 2018, MOFCOM FDI Statistics

Region/Economy	Volume	Global Share %	Change%
Other developed economies	1721.5	12.0	7.1
Developing economies	3807.8	26.6	-6.4
Africa	120.8	0.8	7.5
Asia	3501.5	24.5	-9.0
East, South and South-East Asia	3168.7	22.2	-8.7
West Asia	332.8	2.3	-11.2
Latin America and the Caribbean	173.3	1.2	85.6
Oceania	12.2	0.1	-15.2
South-East Europe & CIS	397.2	2.8	60.5

Source: UNCTAD World Investment Report 2018

5.6. Outflows from Major FDI Participants of China

In 2017, within the top 10 investors, FDI for China by Hong Kong, China, Taiwan Province of China, Singapore and South Korea all accounted more than 10% of their own total FDI outflows. These are which were the most important FDI sources of China.

Table 21 Outflows from Top 10 FDI Participants of China in 2017

Unit:US\$100 million

Country/Region	FDI Outflow	Investment in China in 2016	Share in FDI in China%	Share of its FDI Outflow%
Hong Kong, China	828.4	945.1	69.3	-
Singapore	246.8	47.6	3.5	19.3
British Virgin Islands	707.8	39.9	2.9	5.6
South Korea	316.8	36.7	2.7	11.6
Japan	1604.5	32.6	2.4	2.0
United States	3422.7	26.5	1.9	0.8
Cayman Islands	303.7	21.8	1.6	7.2
Netherlands	233.2	21.7	1.6	9.3
Taiwan Province of China	113.6	17.7	1.3	15.6
German	823.4	15.4	1.1	1.9
Total	8600.8	1205.1	88.4	14.0

Source: UNCTAD World Investment Report 2018; MOFCOM FDI Statistics

5.7. FDI Flows of Countries along the Belt and Road

In 2017, FDI inflows of countries along the Belt and Road was US\$315.3 billion, accounting for 22.1% of the global FDI inflows. The top 5 countries were Singapore, with an amount of US\$62.0 billion FDI inflow;

5.4. FDI Inflows by Region

In 2017, FDI inflows in the world was mainly concentrated on Asia, North America and the European Union. Among them, East Asia, South Asia and Southeast Asia accounted 31.5% of the global total FDI inflows, while European Union accounted 21.2%, North America accounted 21.0% of the grand total.

Table 19 FDI inflows, by Region and Economy in 2017

Unit: US\$100 million

Region/Economy	Volume	Global Share %	Change%
World	14298.1	100.0	-23.4
Developed economies	7123.8	49.8	-37.1
European Union	3035.8	21.2	-42.1
Other developed Europe	301.4	2.1	-26.4
North America	2996.3	21.0	-39.4
Other developed economies	790.4	5.5	7.0
Developing economies	6706.6	46.9	0.1
Africa	417.7	2.9	-21.5
Asia	4758.4	33.3	0.1
East, South and South-East Asia	4503.3	31.5	1.3
West Asia	255.1	1.8	-17.1
Latin America and the Caribbean	1513.4	10.6	8.3
Oceania	17.1	0.1	-11.1
South-East Europe & CIS	449.1	3.1	-1.8

Source: UNCTAD World Investment Report 2018

5.5. FDI Outflows by Region

In 2017, FDI outflows in the world was mainly concentrated on the developed economies. Europe Union accounted 30.5%, North America accounted 29.3%, and other developed countries accounted 12.0% of the grand total.

Table 20 FDI inflows, by Region and Economy, 2017

Unit: US\$100 million

Region/Economy	Volume	Global Share %	Change%
World	14299.7	100.0	-2.9
Developed economies	10092.1	70.6	-3.1
European Union	4357.4	30.5	-3.8
Other developed Europe	-179.3	-1.3	-124.4
North America	4192.6	29.3	18.4

Table 17 Top 10 Countries/Regions of FDI Inflows in 2017

Unit: US\$100 million

Country/Region	Volume	Global Share %	Change%
Total	14298.1	100	-23.4
United States	2753.8	19.3	-39.8
China	1363.2	9.5	2.0
Hong Kong, China	1043.3	7.3	-11.1
Brazil	627.1	4.4	8.1
Singapore	620.1	4.3	-20.0
Netherlands	579.6	4.1	-32.4
France	498.0	3.5	41.6
Australia	463.7	3.2	-2.9
Sweden	409.9	2.9	-15.2
India	399.2	2.8	-10.3

Resource: UNCTAD World Investment Report 2018

5.3. Top 10 Countries/Regions of FDI Outflows

In 2017, The total amount of global FDI outflows was US\$1430.0 billion, decreased 2.9% year-on-year. The United States ranked first with US\$342.3 billion of FDI outflows, accounting for 23.9% of the global FDI outflows, increased 21.9% year-on-year. Japan ranked second with US\$160.5 billion FDI outflows, accounting for 11.2% of the global amount, increased 10.5% year-on-year. China as the third, invested US\$124.6 billion, accounting for 8.7% of the global amount, decreased 36.5% year-on-year.

Table 18 Top 10 Countries/Regions of FDI Outflows in 2017

Unit: US\$100 million

Country/Region	Volume	Global Share %	Change%
Total	14299.7	100.0	-2.9
United States	3422.7	23.9	21.9
Japan	1604.5	11.2	10.5
China	1246.3	8.7	-36.5
United Kingdom	996.1	7.0	21.9
Hong Kong, China	828.4	5.8	38.8
Germany	823.4	5.8	60.0
Canada	769.9	5.4	4.7
British Virgin Islands	707.8	5.0	92.7
France	581.2	4.1	-8.1
Luxembourg	411.6	2.9	-7.2

Source: UNCTAD World Investment Report 2018

5. Global Foreign Direct Investment

5.1. Global FDI Flows

Global FDI inflows in 2017 were US\$1429.8 billion, decreased 23.4% year-on-year, while outflows were US\$1430.0 billion, decreased 2.9% year-on-year. Overall, FDI inflows and outflows were relatively stable in recent years, with an average of US\$1492.9 billion inflows in 2005-2017 and an average of US\$1433.5 billion outflows in 2005-2017.

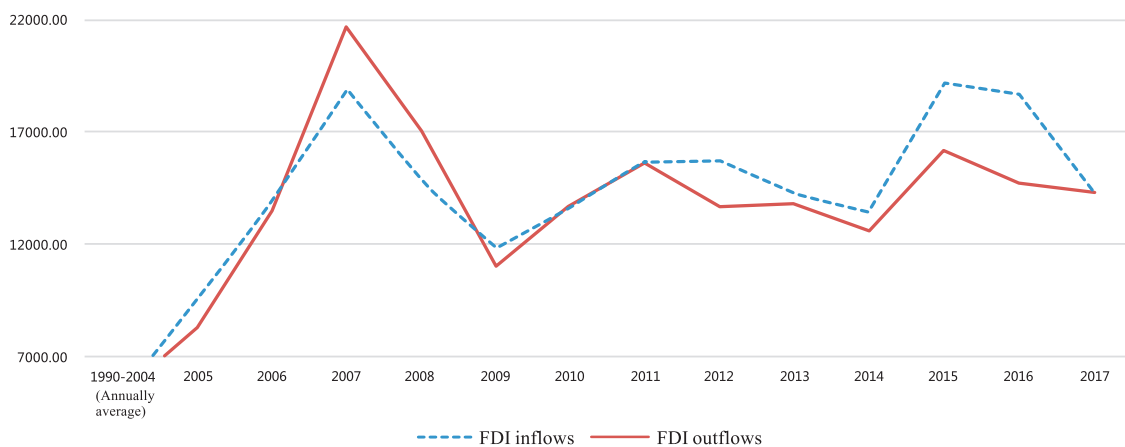


Figure 21 Global FDI Flows, 2004-2017

Source: UNCTAD World Investment Report 2018

5.2. Top 10 Countries/Regions of FDI Inflows

In 2017, the total amount of global FDI inflows was US\$1429.8 billion, decreased 23.4% year-on-year. The United States ranked first with US\$275.4 billion of FDI inflows, accounting for 19.3% of the global FDI inflows, decreased 39.8% year-on-year. China ranked second, attracted US\$136.3 billion FDI, accounting for 9.5% of the global amount, increased 2.0% year-on-year.

Table 15 Statistics of FDI in High-tech Industry in 2017

Unit: US\$ 100 million

High-tech Industry	No. of FIEs		Realized Value	
	Number	Share%	Value	Share%
Total	35662	100	1363.2	100
High-tech Industry	7022	19.7	359.6	26.4
High-tech Manufacturing	1032	2.9	98.9	7.3
High-tech Service	5990	16.8	260.7	19.1

4.3. Investment of East, Central and West parts of China

In 2017, according to the geographical distribution, the key areas of FDI are the east part of China, with 90.4% of the national total newly established FIEs and 84.1% of realized FDI. There was 4.7% of the national total newly established FIEs and 6.1% of realized FDI in the central part. There was 5.0% of the national total newly established FIEs and 6.0% of realized FDI in the west part.

Table 16 FDI Inflow to East, Central and West Parts of China in 2017

Unit: US\$ 100 million

Region	No. of FIEs	Share%	Realized FDI Value	Share%
Total	35662	100	1363.2	100
East	32219	90.4	1145.9	84.1
Central	1672	4.7	83.1	6.1
West	1761	4.9	81.3	6.0
Relevant departments	10	0.0	52.8	3.9

Note: Relevant departments involve banking, securities and insurance industries FDI statistics

East part: Beijing, Tianjin, Hebei, Liaoning, Shanghai, Jiangsu, Zhejiang, Fujian, Shandong, Guangdong, Hainan.

Central part: Shanxi, Jilin, Heilongjiang, Anhui, Jiangxi, Henan, Hubei, Hunan.

West part: Inner Mongolia, Guangxi, Sichuan, Chongqing, Guizhou, Yunnan, Shaanxi, Gansu, Qinghai, Ningxia, Xinjiang, Tibet.

Sources: MOFCOM FDI Statistics

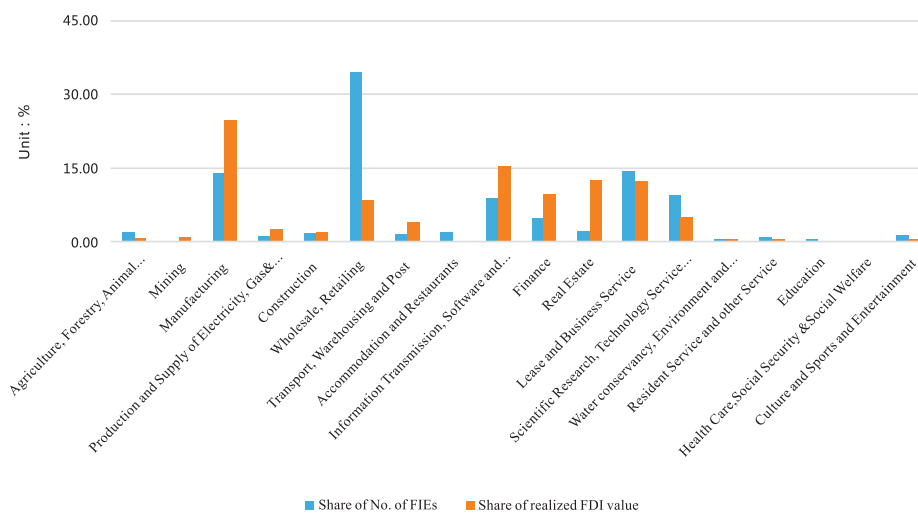
Table 14 Industrial Structure of FDI in 2017

Unit: US\$ 100 million

Industry	No. of FIEs	Share%	Realized Value	Share%
Total	35662	100	1363.2	100
Primary Industry	579	1.6	7.9	0.6
Secondary Industry	6017	16.9	409.5	30.0
Tertiary Industry	29066	81.5	945.8	69.4

Sources: MOFCOM FDI Statistics

In 2017, FDI mainly focused on wholesale and retailing, lease and business services, manufacturing, scientific research and technology services, information transmission, software and information technology services, financial and real estate industries. The number of FIEs in these seven industries accounted for 88.1%, and the amount of realized FDI accounted for 87.7%. (see Appendix 20 for details)

**Figure 20 Industrial Structure of FDI in 2017**

Sources: MOFCOM FDI Statistics

In 2017, FDI in high-tech industries was mainly concentrated on the high-tech services sector, 5590 FIEs were newly established, accounting for 16.8% of the national total number. Realized FDI was US\$26.7 billion, accounting for 19.1% of the national total amount. When it comes to high-tech manufacturing industries, 1032 FIEs were newly established in 2017, accounting for 2.9% of the national total number. Realized FDI was US\$9.9 billion, accounting for 7.3% of the national total amount.

4. Distribution of Foreign Investment Sources

4.1. Forms of Foreign Investment

As of December 2017, the major form of FDI was wholly foreign-owned enterprises. Among them, the number of wholly foreign-owned enterprises was 506156, accounting for 56.2% of all FIEs, and the amount of realized FDI was US\$1244.4 billion, accounting for 61.9% of the national total amount. The number of equity joint ventures was 331829, accounting for 36.9%, and the amount of realized FDI was US\$498.3 billion, accounting for 24.8% of the national total amount. The number of contractual joint ventures was 60912, accounting for 6.8%, and the amount of realized FDI was US\$111.6 billion, accounting for 5.6% of the national total amount.

Table 13 Statistics of FDI by Form as of December in 2017

Unit: US\$ 100 million

Form	No. of FIEs		Realized FDI Value	
	No.	Share %	Value	Share %
Total	900165	100	20109.3	100
Equity Joint Venture	331829	36.9	4982.7	24.8
Contractual Joint Venture	60912	6.8	1116.4	5.6
Wholly Foreign-owned Enterprise	506156	56.2	12444.0	61.9
Foreign Invested Share Limited Corporation	802	0.1	339.7	1.7
Joint Exploration	193	0.0	86.9	0.4
Others	273	0.0	1139.7	5.7

Sources: MOFCOM FDI Statistics

4.2. Industries of Foreign Investment

In 2017, among the three major industries, the tertiary industry is the main direction of FDI. Newly established FIEs accounted for 81.5%, realized FDI accounted for 69.4% of the national total.

In 2017, the top 5 investment sectors from countries along the Belt and Road were manufacturing, real estate, lease and business services, wholesale and retailing, information transmission, software and information technology services. Newly established FIEs of this 5 sectors accounted for 86.0% of the total number by countries along the Belt and Road, which attained a share of 78.5% of the total realized FDI from countries along the Belt and Road.

Table 12 Top 5 Investment Sectors from Countries along the Belt and Road in 2017

Unit: US\$ 10,000

Industry	No. of FIEs	Share %	Realized FDI Value	Share %
Total	3827	100	543360	100
Manufacturing	314	8.2	152759	28.1
Real Estate	24	0.6	105218	19.4
Lease and Business Services	380	9.9	73956	13.6
Wholesale and Retailing	2416	63.1	49795	9.2
Information Transmission, Software and Information Technology Services	159	4.2	44961	8.3

Sources: MOFCOM FDI Statistics

In 2017, the top 5 investment sectors from BRICS were manufacturing, information transmission, software and information technology services, wholesale and retailing, mining, transportation, warehousing and postal services and real estate. Newly established FIEs of this 5 sectors accounted for 80.1% of the total number by the BRICS, which attained a share of 99.4% of the total realized FDI from BRICS.

Table 11 Top 5 BRICS Investment Sectors in 2017

Unit: US\$ 10,000

Industry	No. of FIEs	Share %	Realized FDI Value	Share %
Total	568	100	28902	100
Manufacturing	47	8.3	15291	52.9
Information Transmission, Software and Information Technology Services	27	4.8	12675	43.9
Wholesale and Retailing	369	65.0	336	1.2
Mining	1	0.2	247	0.9
Transportation, Warehousing and Postal Services	11	1.9	194	0.7

Sources: MOFCOM FDI Statistics

3.12. Investment from Countries along the Belt and Road

In 2017, 3827 FIEs were newly established by countries along the Belt and Road, increased 32.6% year-on-year, accounting for 10.7% of the national total. Realized FDI was 5.43 billion US dollars, decreased 19.9% year-on-year, accounting for 4.0% of the national total. (See Appendix 19 for details)

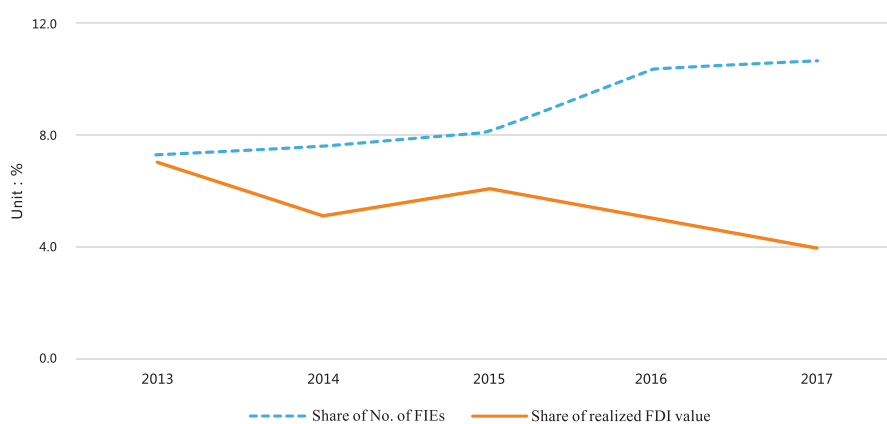


Figure 19 Investment from Countries along the Belt and Road, 2013-2017

Sources: MOFCOM FDI Statistics

In 2017, the top 5 investment sectors from ASEAN were manufacturing, real estate, lease and business services, wholesale and retailing, transportation, warehousing and postal services. Newly established FIEs of this 5 sectors accounted for 70.5% of the total number by the ASEAN, which attained a share of 78.9% of the total realized FDI from ASEAN.

Table 10 Top 5 ASEAN Investment Sectors in 2017

Unit: US\$ 10,000

Industry	No. of FIEs	Share %	Realized FDI Value	Share %
Total	1261	100	508436	100
Manufacturing	177	14.0	137439	27.0
Real Estate	23	1.8	105212	20.7
Lease and Business Services	230	18.2	71303	14.0
Wholesale and Retailing	419	33.2	48196	9.5
Transportation, Warehousing and Postal Services	40	3.2	38776	7.6

Sources: MOFCOM FDI Statistics

3.11. Investment from BRICS

In 2017, 568 FIEs were newly established by BRICS, increased 43.1% year-on-year, accounting for 1.6% of the national total. Realized FDI was US\$0.3 billion, increased 169.3% year-on-year, accounting for 0.2% of the national total. (See Appendix 18 for details)

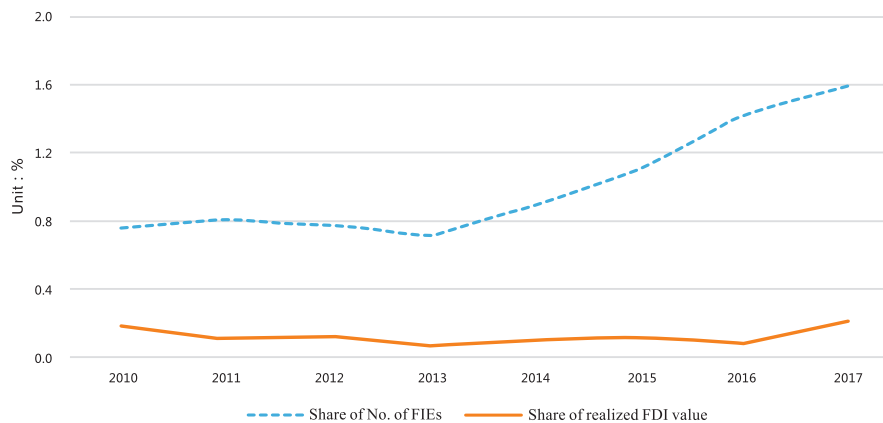


Figure 18 Investment from BRICS, 2010-2017

Sources: MOFCOM FDI Statistics

In 2017, the top 5 investment sectors from the European Union were manufacturing, lease and business services, real estate, wholesale and retailing, and finance. Newly established FIEs of this 5 sectors accounted for 72.0% of the total number by the European Union, which attained a share of 88.2% of the total realized FDI from the European Union.

Table 9 Top 5 Investment Sectors from European Union in 2017

Unit: US\$ 10,000

Industry	No. of FIEs	Share %	Realized FDI Value	Share %
Total	1817	100	828811	100
Manufacturing	382	21.0	424025	51.2
Lease and Business Services	322	17.7	100426	12.1
Real Estate	10	0.6	70662	8.5
Wholesale and Retailing	585	32.2	69114	8.3
Finance	9	0.5	67128	8.1

Sources: MOFCOM FDI Statistics

3.10. Investment from ASEAN

In 2017, 1261 FIEs were newly established by ASEAN, increased 10.4% year-on-year, accounting for 3.5% of the national total. Realized FDI was US\$5.1 billion, decreased 22.2% year-on-year, accounting for 3.7% of the national total. (See Appendix 17 for details)

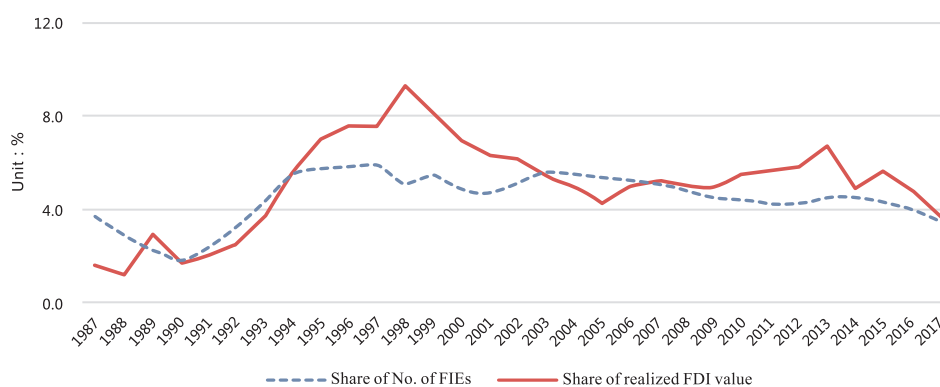


Figure 17 Investment from ASEAN, 1987-2017

Sources: MOFCOM FDI Statistics

In 2017, the top 5 investment sectors from the United States were manufacturing, scientific research and technology services, mining, lease and business services, information transmission, software and information technology services. Newly established FIEs of this 5 sectors accounted for 71.1% of the total number by the United States, which attained a share of 90.9% of the total realized FDI from the United States.

Table 8 Top 5 investment Sectors from the United States in 2017

Unit: US\$ 10,000

Industry	No. of FIEs	Share %	Realized FDI Value	Share %
Total	1346	100	264905	100
Manufacturing	259	19.2	93440	35.3
Scientific Research and Technology Services	304	22.6	56337	21.3
Mining	1	0.1	38641	14.6
Lease and Business Services	215	16.0	32873	12.4
Information Transmission, Software and Information Technology Services	178	13.2	19395	7.3

Sources: MOFCOM FDI Statistics

3.9. Investment from European Union

In 2017, 1817 FIEs were newly established by European Union, increased 8.2% year-on-year, accounting for 5.1% of the national total. Realized FDI was US\$8.3 billion, decreased 5.8% year-on-year, accounting for 6.1% of the national total. (See Appendix 16 for details)



Figure 16 Investment from European Union, 1987-2017

Sources: MOFCOM FDI Statistics

In 2017, the top 5 investment sectors from South Korea were manufacturing, wholesale and retailing, lease and business services, real estate, scientific research and technology services. Newly established FIEs of this 5 sectors accounted for 78.1% of the total number by South Korea, which attained a share of 96.6% of the total realized FDI from South Korea.

Table 7 Top 5 Investment Sectors from South Korea in 2017

Unit: US\$ 10,000

Industry	No. of FIEs	Share %	Realized FDI Value	Share %
Total	1627	100	367253	100
Manufacturing	364	22.4	282856	77.0
Wholesale and Retailing	665	40.9	28059	7.6
Lease and Business Services	128	7.9	25754	7.0
Real Estate	8	0.5	10527	2.9
Scientific Research and Technology Services	106	6.5	7571	2.1

Sources: MOFCOM FDI Statistics

3.8. Investment from the United States

In 2017, 1346 FIEs were newly established by the United States, increased 8.7% year-on-year, accounting for 3.8% of the national total. Realized FDI was US\$2.7 billion, increased 11.0% year-on-year, accounting for 1.9% of the national total. (See Appendix 15 for details)

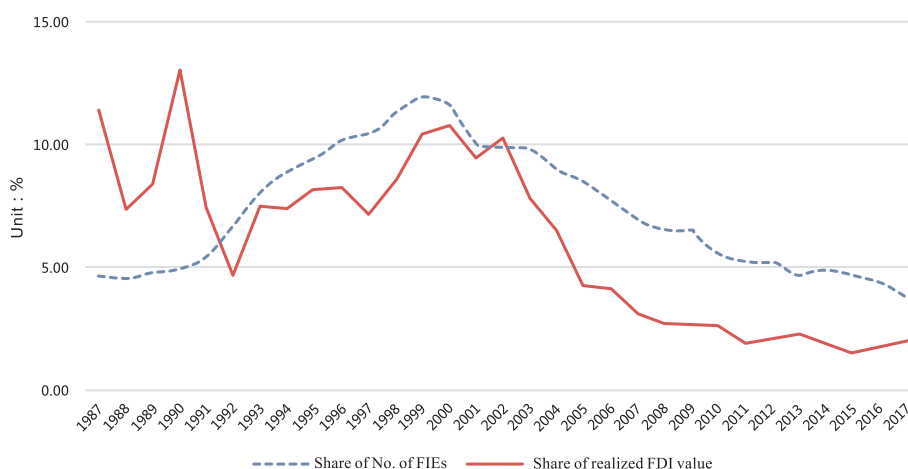


Figure 15 Investment from the United States, 1987-2017

Sources: MOFCOM FDI Statistics

In 2017, the top 5 investment sectors from Singapore were manufacturing, real estate, lease and business services, wholesale and retailing, transport, warehousing and postal services. Newly established FIEs of this 5 sectors accounted for 68.6% of the total number by Singapore, which attained a share of 77.9% of the total realized FDI from Singapore.

Table 6 Top 5 Investment Sectors from Singapore in 2017

Unit: US\$ 10,000

Industry	No. of FIEs	Share %	Realized FDI Value	Share %
Total	706	100	476318	100
Manufacturing	111	15.7	122627	25.7
Real Estate	19	2.7	103484	21.7
Lease and Business Services	159	22.5	64208	13.5
Wholesale and Retailing	160	22.7	42072	8.8
Transport, Warehousing and Postal Services	35	5.0	38715	8.1

Sources: MOFCOM FDI Statistics

3.7. Investment from South Korea

In 2017, 1627 FIEs were newly established by South Korea, decreased 19.4% year-on-year, accounting for 4.7% of the national total. Realized FDI was US\$3.7 billion, decreased 22.7% year-on-year, accounting for 2.7% of the national total. (See Appendix 14 for details)

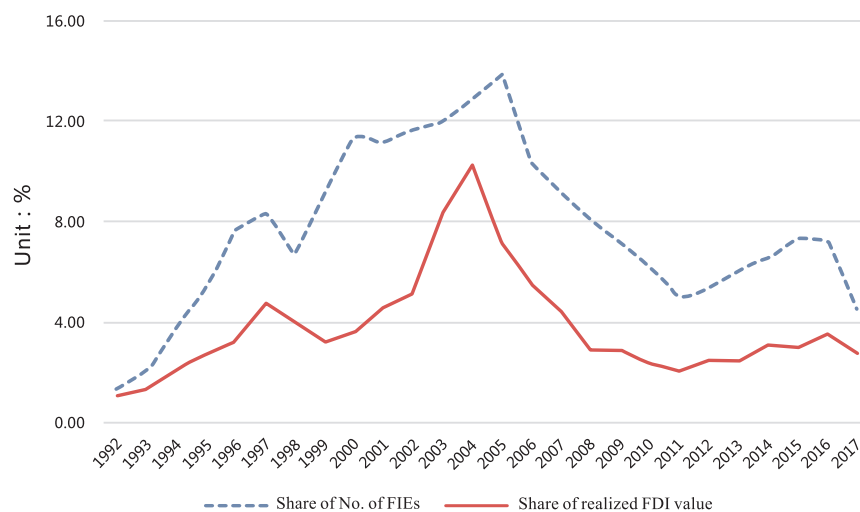


Figure 14 Investment from South Korea, 1992-2017

Sources: MOFCOM FDI Statistics

In 2017, top 5 investment sectors from Japan were manufacturing, lease and business services, wholesale and retailing, transport, warehousing and postal services, and finance. Newly established FIEs of this 5 sectors accounted for 73.1% of the total number by Japan, which attained a share of 93.9% of the total realized FDI from Japan.

Table 5 Top 5 Investments Sectors from Japan in 2017

Unit: US\$ 10,000

Industry	No. of FIEs	Share %	Realized FDI Value	Share %
Total	590	100	326100	100
Manufacturing	155	26.3	194317	59.6
Lease and Business Services	84	14.2	57989	17.8
Wholesale and Retailing	182	30.8	44233	13.6
Transport, Warehousing and Postal Services	7	1.2	5199	1.6
Finance	3	0.5	4476	1.4

Sources: MOFCOM FDI Statistics

3.6. Investment from Singapore

In 2017, 706 FIEs were newly established by Singapore, increased 3.2% year-on-year, accounting for 2.0% of the national total. Realized FDI was US\$4.8 billion US dollars, decreased 21.2% year-on-year, accounting for 3.5% of the national total. (See Appendix 13 for details)

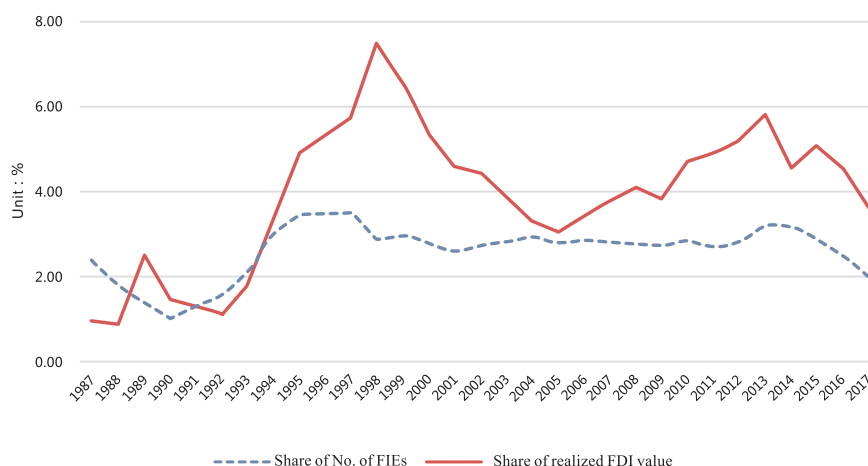


Figure 13 Investment from Singapore, 1987-2017

Sources: MOFCOM FDI Statistics

In 2017, the top 5 investment sectors from Taiwan Province of China were manufacturing, wholesale and retailing, lease and business services, real estate, scientific research and technology services. Newly established FIEs of this five industries accounted for 77.8% of the total by Taiwan Province of China, which attained a share of 91.1% of the total realized FDI from Taiwan Province of China.

Table 4 Top 5 Investment Sectors from Taiwan Province of China in 2017

Unit: US\$ 10,000

Industry	No. of FIEs	Share %	Realized FDI Value	Share %
Total	3464	100	177247	100
Manufacturing	519	15.0	118656	66.9
Wholesale and Retailing	1108	32.0	15185	8.6
Lease and Business Services	489	14.1	11008	6.2
Real Estate	36	1.0	8579	4.8
Scientific Research and Technology Services	542	15.6	8000	4.5

Sources: MOFCOM FDI Statistics

3.5. Investment from Japan

In 2017, 590 FIEs were newly established by Japan, increased 2.4% year-on-year, accounting for 1.7% of the national total. Realized FDI was US\$3.3 billion US dollars, decreased 2.4% year-on-year, accounting for 2.4% of the national total. (See Appendix 12 for details)

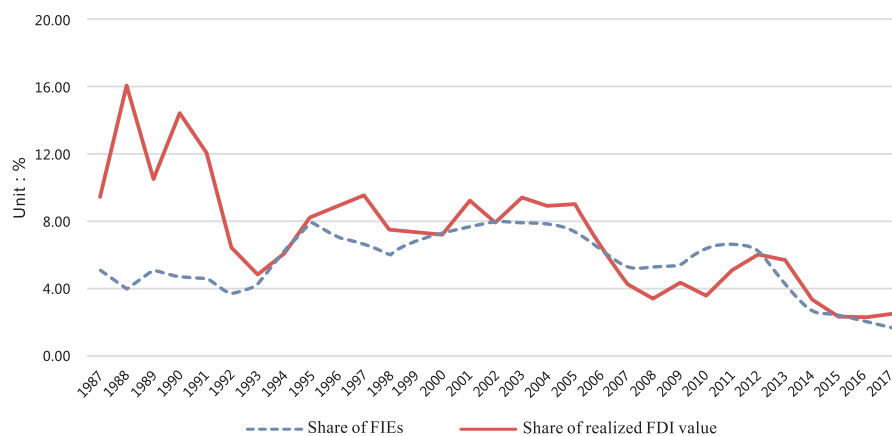


Figure 12 Investment from Japan, 1987-2017

Sources: MOFCOM FDI Statistics

In 2017, the top 5 investment sectors from Hong Kong, China, China were information transmission, software and information technology services, manufacturing, real estate, lease and business services, wholesale and retailing. Newly established FIEs of this 5 sectors accounted for 70.8% of the total number by Hong Kong, China, which attained a share of 74.3% of the total realized FDI from Hong Kong, China.

Table 3 Top 5 Investment Sectors from Hong Kong, China in 2017

Unit: US\$ 10,000

Industry	No. of FIEs	Share %	Realized FDI Value	Share %
Total	18066	100	9450901	100
Information Transmission, Software and Information Technology Services	1909	10.6	1937808	20.5
Manufacturing	2117	11.7	1660347	17.6
Real Estate	473	2.6	1384341	14.6
Lease and Business Services	2673	14.8	1226753	13.0
Wholesale and Retailing	5615	31.1	816458	8.6

Sources: MOFCOM FDI Statistics

3.4. Investment from Taiwan Province of China

In 2017, 3464 FIEs were newly established by Taiwan Province of China, decreased 1.5% year-on-year, accounting for 9.7% of the national total. Realized FDI was US\$1.8 billion, decreased 9.7% year-on-year, accounting for 1.3% of the national total. (See Appendix 11 for details)

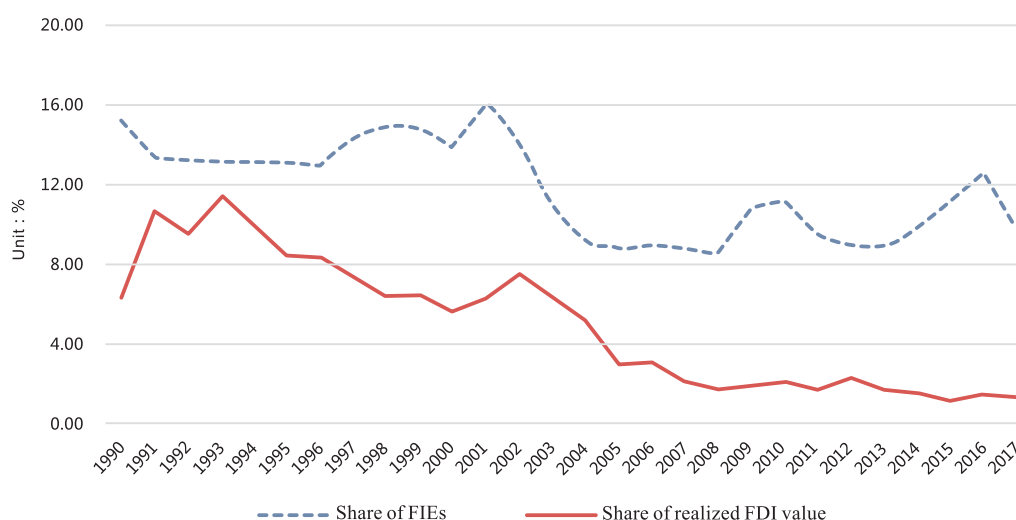


Figure 11 Investment from Taiwan Province of China, 1990-2017

Sources: MOFCOM FDI Statistics

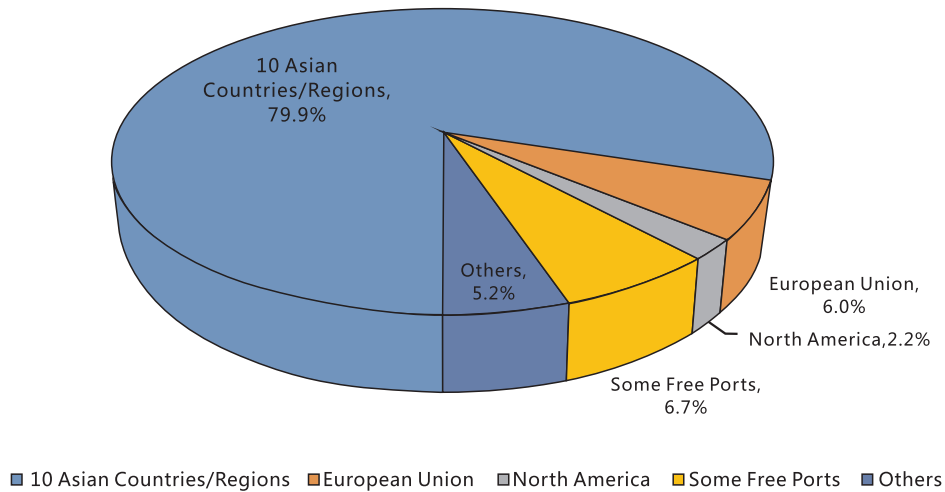


Figure 9 Source area of Realized FDI in 2017

Sources: MOFCOM FDI Statistics

3.3. Investment from Hong Kong, China

In 2017, 18066 FIEs were newly established by Hong Kong, China, increased 41.7% year-on-year, accounting for 50.7% of the national total. Realized FDI by Hong Kong, China was 94.51 billion US dollars, increased 16.0% year-on-year, accounting for 69.3% of the national total. (See Appendix 10 for details)

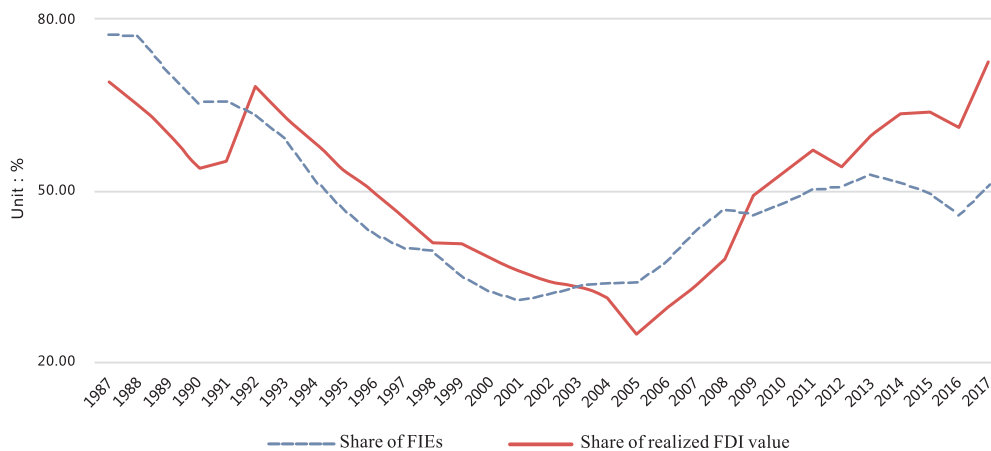


Figure 10 Investment from Hong Kong, China, 1987-2017

Sources: MOFCOM FDI Statistics

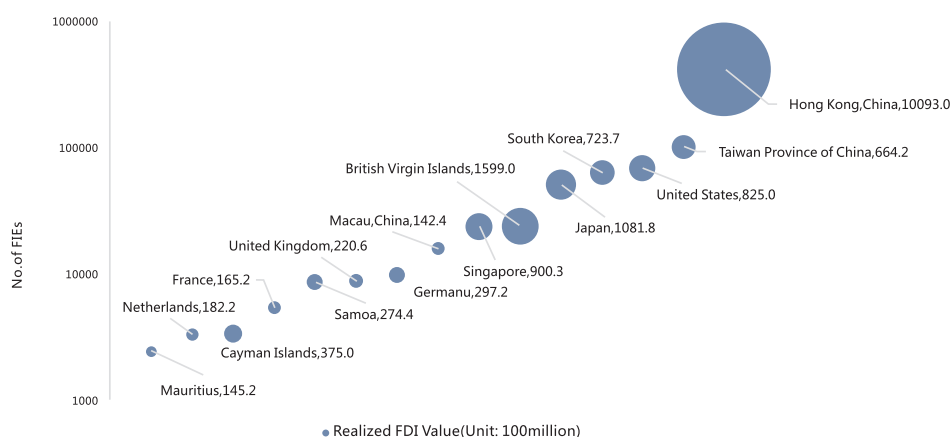


Figure 7 Top 15 Investors in China as of 2017

Sources: MOFCOM FDI Statistics

3.2. Major Foreign Investors of China

The main sources of investment in China are Asia, the European Union, North America and some free port areas. In 2017, Asia's ten countries/regions (Hong Kong, China, Indonesia, Japan, Macau, China, Malaysia, the Philippines, Singapore, South Korea, Thailand, and Taiwan Province of China) accounted for 72.3% of the newly established FIEs in China, and realized FDI accounted for 79.8%. Main members of the EU (Belgium, Denmark, Britain, Germany, France, Ireland, Italy, Luxembourg, the Netherlands, Greece, Portugal, Spain, Austria, Finland, Sweden) accounted for 4.8% of the newly established FIEs in China, and realized FDI accounted for 6.0%. North America (United States, Canada) accounted for 5.1% of newly established FIEs in China, and realized FDI accounted for 2.2%. Some free port areas (Mauritius, Barbados, Cayman Islands, British Virgin Islands, Bermuda, Samoa) accounted for 1.9% of the newly established FIEs in China, and realized FDI accounted for 6.7%. (See Appendix 8 for details)

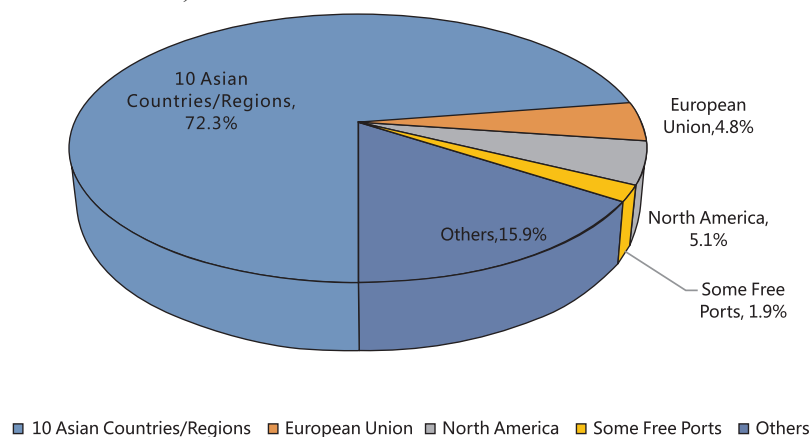


Figure 8 Source area of FIEs in 2017

Sources: MOFCOM FDI Statistics

3. Distribution of Foreign Investment Sources

3.1. Top 15 Investors of China

In 2017, Hong Kong, China, Taiwan Province of China and South Korea ranked as top 3 according to the number of newly established FIEs, In the meantime, Hong Kong, China, Singapore and the British Virgin Islands ranked as top 3 according to realized FDI value.

Table 2 Top 15 Investors of China in 2017

Unit: US\$ 10,000

Country/Region	No. of FIEs	Share %	Realized FDI Value	Share %
Total	35662	100	13631513	100
Hong Kong, China	18066	50.7	9450901	69.3
Singapore	706	2.0	476318	3.5
British Virgin Islands	309	0.9	399076	2.9
South Korea	1627	4.6	367253	2.7
Japan	590	1.7	326100	2.4
United States	1346	3.8	264905	1.9
Cayman Islands	105	0.3	217690	1.6
Netherlands	122	0.3	217398	1.6
Taiwan Province of China	3464	9.7	177247	1.3
German	387	1.1	154163	1.1
Bermuda	6	0.0	134213	1.0
Samoa	250	0.7	122943	0.9
United Kingdom	393	1.1	100333	0.7
Denmark	57	0.2	81947	0.6
France	209	0.6	79018	0.6
others	8025	22.5	1062008	7.8

Sources: MOFCOM FDI Statistics

As of December 2017, Hong Kong, China, Taiwan Province of China and the United States ranked as top 3 according to the number of FIEs. In the meantime, Hong Kong, China, the British Virgin Islands and Japan ranked as top 3 according to realized FDI value. (See Appendix 7 for details)

2.4. Import and Export

In 2017, national total value of imports and exports commodities reached US\$4104.5 billion increased 11.4% year-on-year. Total value of imports and exports by FIEs was US\$1839.1 billion, increased 9.0% year-on-year, accounting for 44.8% of the national total. National total value of imports was US\$1841.0 billion increased 15.9% year-on-year. Total value of imports by FIEs was US\$861.6 billion, increased 11.8% year-on-year, accounting for 46.8% of the national total. National total value of exports was US\$2263.5 billion, increased 7.9% year-on-year. Total value of exports by FIEs was US\$977.6 billion, increased 6.6% year-on-year, accounting for 43.2% of the national total. (See Appendix 5 for details)

In the past 20 years, total value of imports and exports by FIEs accounted as a steady level of more than 40% of the national. (See Appendix 6 for details)

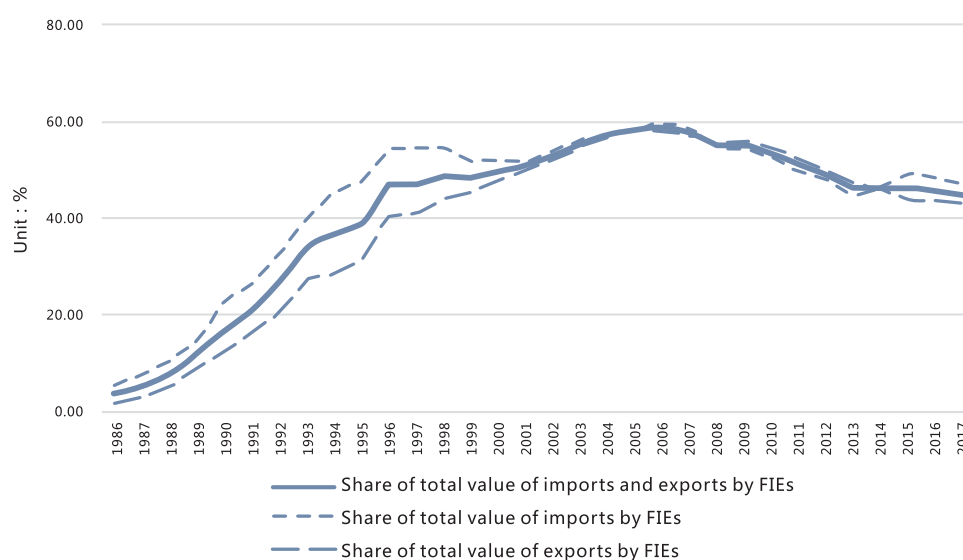


Figure 6 Share of FIEs' Total Value of Imports and Exports Commodities, 1986-2017

Source: General Administration of Customs Statistics

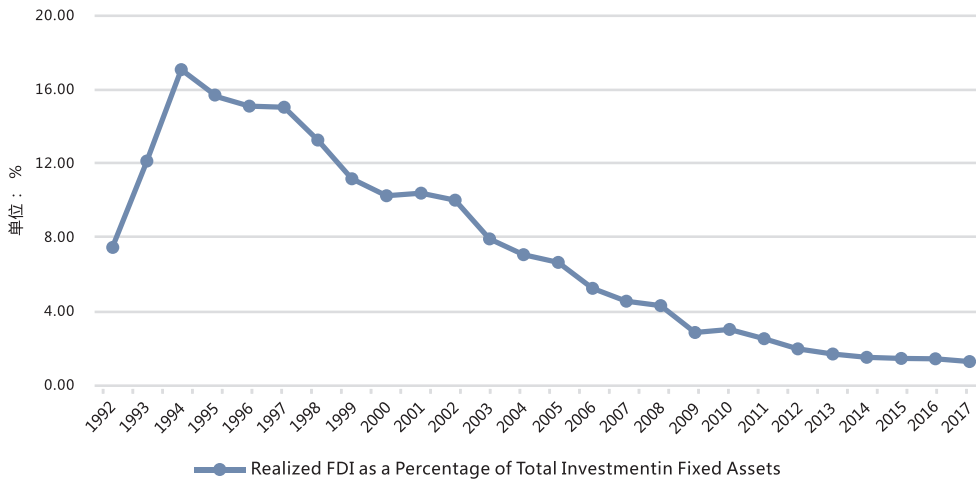


Figure 4 Realized FDI as a Percentage of Total Investment in Fixed Assets, 1992-2017

Sources: China Statistical Yearbook & MOFCOM FDI Statistics

2.3. Tax Revenue of FIEs

In 2017, national tax revenue was 15573.9 billion yuan, with an increase of 10.8%. Tax revenue from FIEs, was 2918.5 billion yuan, with an increase of 13.7%, accounting for 18.7% of the national tax revenue. From 1992 to 2017, the total amount of tax revenue from FIEs accounted for an average of 18.1% of the national tax revenue. (See Appendix 4 for details)

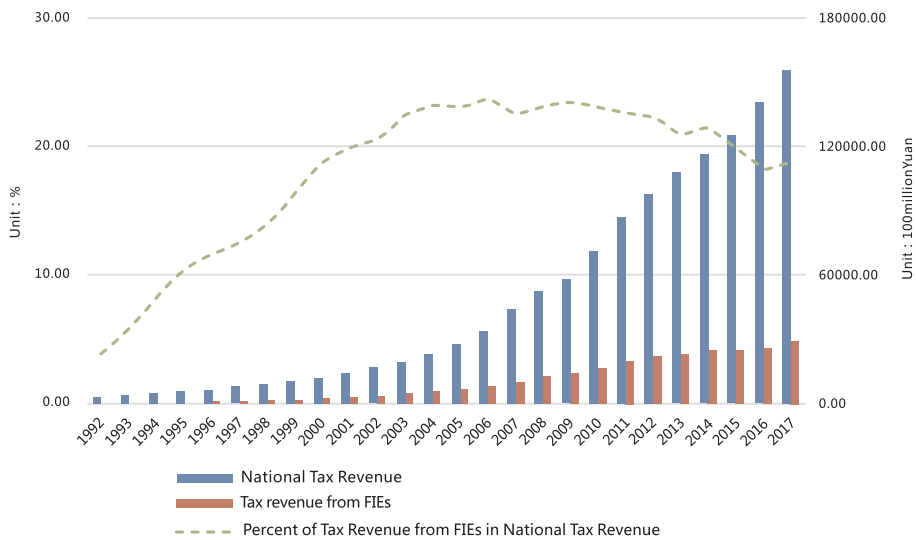


Figure 5 Tax Revenue from FIEs, 1992-2017

Sources: China Statistical Yearbook & relevant departments, State Administration of Taxation

2. Performance of Foreign Investment Economy

2.1. Value-added of Foreign Invested Industrial Enterprises above Designed Size

In 2017, foreign-invested economies remained in good shape. The national industrial added value increased by 6.4%, and the industrial added value of foreign-invested enterprises above designated size increased by 6.6% which was higher than national average. From 1992 to 2017, the national industrial added value increased by an average of 11.1%, while the industrial added value of foreign-invested enterprises above designated size increased by an average of 15.0%. (See Appendix 2 for details)

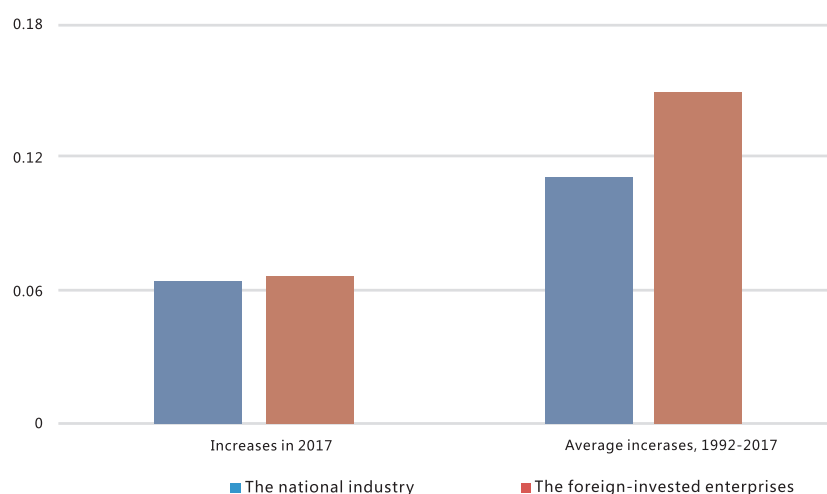


Figure 3 Increase of Value-added of Foreign Invested Industrial Enterprises above Designed Size in 2017

Source: Statistical Communiqué of the People's Republic of China on National Economic and Social Development of relevant years.

Note: Value added is calculated at current prices whereas growth rates are at constant prices.

2.2. Realized FDI as a Percentage of Total Investment in Fixed Assets

In 2017, fixed assets investment was US\$9497.3 billion. The proportion of realized FDI in fixed assets investment of the whole society was 1.4%, which was the lowest since 1992. (See Appendix 3 for details)

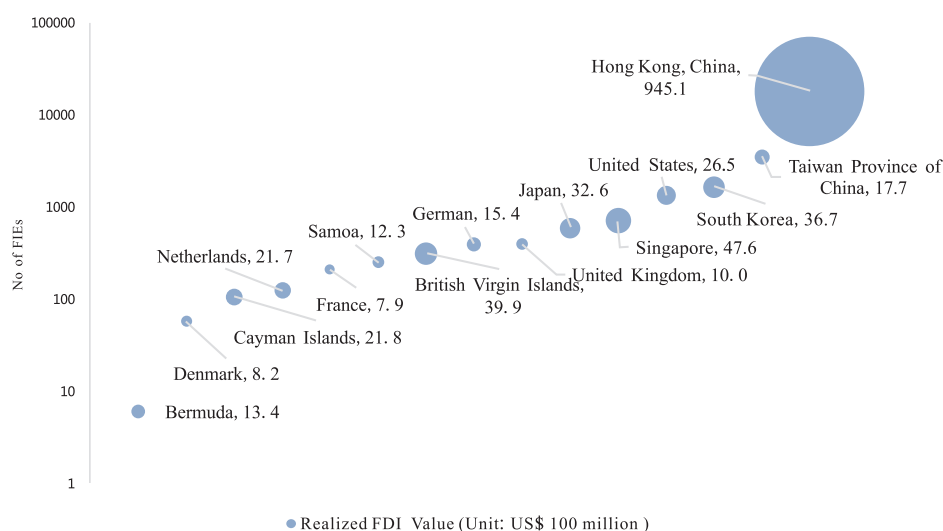


Figure 2 Top 15 Investors in China in 2017

Sources: MOFCOM FDI Statistics

In 2017, FDI was dominated by wholly foreign-owned enterprises. Among them, 27007 newly established enterprises accounting for 75.7% of FIE number, and realized US\$91.34 billion FDI, accounting for 67.0%. 8364 equity joint ventures were established, which was the secondary factor of FDI in China 2017, accounting for 23.5% of FIE number, and realized US\$29.74 billion FDI accounting for 21.8%.

Table 1 Statistics of FDI by Form in 2017

Unit: US\$ 100 million

Form	No. of FIEs		Realized FDI Value	
	FIEs	Share%	Value	FIEs
Total	35662	100	1363.2	100
Equity Joint Venture	8364	23.5	297.4	21.8
Contractual Joint Venture	124	0.4	8.1	0.6
Wholly Foreign-owned Enterprise	27007	75.7	913.4	67.0
Foreign Invested Share Limited Corporation	125	0.4	64.8	4.8
Others	42	0.1	79.5	5.8

Note: Other FIEs include partnerships and cooperative development projects, etc.

Sources: MOFCOM FDI Statistics

In 2017, China regained its position as the second largest recipient of FDI in the world, with US\$136.3 billion FDI and 2.0% year-on-year growth accounting for 9.5% of the global FDI inflows.

Contrary to the falling by 23.4% of global FDI, China's realized FDI increased. There were 35662 newly established foreign investment enterprises (FIEs), which was increased by 27.8%. Also, there was US\$136.3 billion FDI realized, which increased by 2%, reached a historic peak level. The steadily and continuously growing trend of FDI inflows will make new contribution to the high quality development of China's economy.

1. Summary of Foreign Direct Investment (FDI) in 2017

In 2017, the realized FDI value in China was US\$136.3 billion, with an increase of 2.0% over 2016. As of 2017, FDI stock in China exceeded \$2 trillion, reaching US\$2010.9 billion.

In 2017, 35662 new FIEs were established in China, an increase of 27.8% compared with 2016. As of December 2017, 900165 FIEs were established in China. (See Appendix 1 for details)

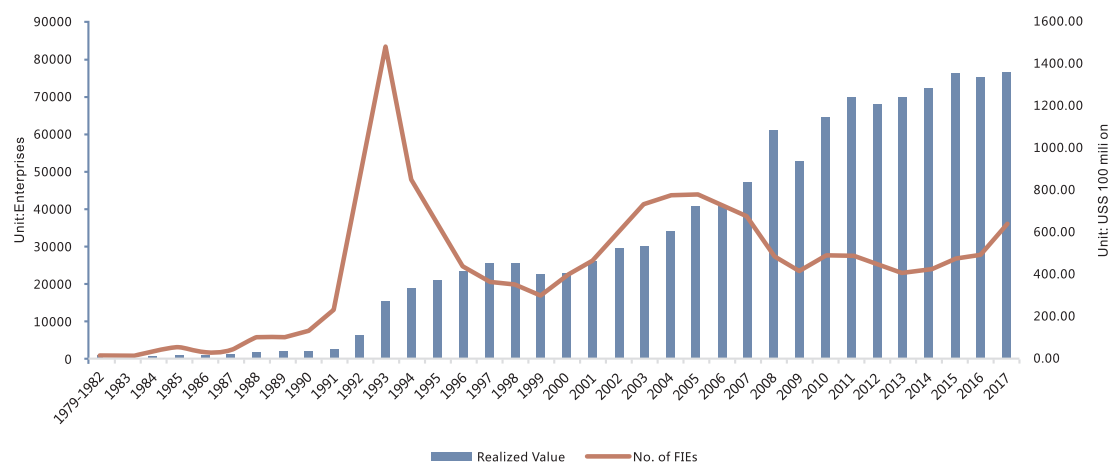


Figure 1 Foreign Direct Investment in China, 1979-2017

Sources: MOFCOM FDI Statistics

In 2017, US\$125.7 billion FDI were realized in China by the top 15 countries/regions, accounting for 92.2% of the total. 27637 FIEs were established, accounting for 77.5% of the total FIE amount in 2017. (see Appendix 7 for details)

Table Contents

Table 1	Statistics of FDI by Form in 2017.....	2
Table 2	Top 15 Investors of China in 2017.....	6
Table 3	Top 5 Investment Sectors from Hong Kong, China in 2017.....	9
Table 4	Top 5 Investment Sectors from Taiwan Province of China in 2017	10
Table 5	Top 5 Investments Sectors from Japan in 2017	11
Table 6	Top 5 Investment Sectors from Singapore in 2017.....	12
Table 7	Top 5 Investment Sectors from South Korea in 2017.....	13
Table 8	Top 5 investment Sectors from the United States in 2017	14
Table 9	Top 5 Investment Sectors from European Union in 2017.....	15
Table 10	Top 5 ASEAN Investment Sectors in 2017.....	16
Table 11	Top 5 BRICS Investment Sectors in 2017	17
Table 12	Top 5 Investment Sectors from Countries along the Belt and Road in 2017	18
Table 13	Statistics of FDI by Form as of December in 2017.....	19
Table 14	Industrial Structure of FDI in 2017.....	20
Table 15	Statistics of FDI in High-tech Industry in 2017.....	21
Table 16	FDI Inflow to East, Central and West Parts of China in 2017	21
Table 17	Top 10 Countries/Regions of FDI Inflows in 2017.....	23
Table 18	Top 10 Countries/Regions of FDI Outflows in 2017	23
Table 19	FDI inflows, by Region and Economy in 2017	24
Table 20	FDI inflows, by Region and Economy, 2017.....	24
Table 21	Outflows from Top 10 FDI Participants of China in 2017.....	25
Table 22	FDI Flows of BRICS in 2017	28
Table 23	Net FDI Flows of Developing Economies in 2017.....	28

Figure Contents

Figure 1	Foreign Direct Investment in China, 1979-2017	1
Figure 2	Top 15 Investors in China in 2017	2
Figure 3	Increase of Value-added of Foreign Invested Industrial Enterprises above Designed Size in 2017.....	3
Figure 4	Realized FDI as a Percentage of Total Investment in Fixed Assets, 1992-2017	4
Figure 5	Tax Revenue from FIEs, 1992-2017	4
Figure 6	Share of FIEs' Total Value of Imports and Exports Commodities, 1986-2017	5
Figure 7	Top 15 Investors in China as of 2017.....	7
Figure 8	Source area of FIEs in 2017	7
Figure 9	Source area of Realized FDI in 2017	8
Figure 10	Investment from Hong Kong, China, 1987-2017.....	8
Figure 11	Investment from Taiwan Province of China, 1990-2017.....	9
Figure 12	Investment from Japan, 1987-2017.....	10
Figure 13	Investment from Singapore, 1987-2017.....	11
Figure 14	Investment from South Korea, 1992-2017.....	12
Figure 15	Investment from the United States, 1987-2017.....	13
Figure 16	Investment from European Union, 1987-2017.....	14
Figure 17	Investment from ASEAN, 1987-2017.....	15
Figure 18	Investment from BRICS, 2010-2017.....	16
Figure 19	Investment from Countries along the Belt and Road, 2013-2017.....	17
Figure 20	Industrial Structure of FDI in 2017	20
Figure 21	Global FDI Flows, 2004-2017	22
Figure 22	FDI Inflows of Countries along the Belt and Road in 2017.....	26
Figure 23	FDI Ourflows of Countries along the Belt and Road in 2017.....	27

5.2. Top 10 Countries/Regions of FDI Inflows.....	22
5.3. Top 10 Countries/Regions of FDI Outflows.....	23
5.4. FDI Inflows by Region.....	24
5.5. FDI Outflows by Region.....	24
5.6. Outflows from Major FDI Participants of China.....	25
5.7. FDI Flows of Countries along the Belt and Road.....	25
5.8. FDI Flows of BRICS.....	28
5.9. FDI Flows of Developing Economies.....	28
Appendix:	29
Appendix 1 FDI Stock as of 2017.....	29
Appendix 2 Growth Rate of Value-added of Industrial Enterprises and Foreign Invested Industrial Enterprises above the Designated Size, 1992-2017.....	30
Appendix 3 Realized FDI as a Percentage of Total Investment in Fixed Assets, 1992-2017.....	31
Appendix 4 Tax Revenue of FIEs, 1992-2017 (Excluding Customs Duty and Land Fees).....	32
Appendix 5 Total Imports and Exports by FIEs in 2017.....	33
Appendix 6 Total Imports and Exports by FIEs, 1986-2017.....	34
Appendix 7 Top 15 Investors of China as of 2017.....	35
Appendix 8 Statistics of FDI from Selected Countries/Regions in 2017.....	36
Appendix 9 Statistics of FDI from Selected Countries/Regions as of 2017.....	37
Appendix 10 Investment from Hong Kong, China, 1987-2017.....	38
Appendix 11 Investment from Taiwan Province of China, 1990-2017.....	39
Appendix 12 Investment from Japan, 1987-2017.....	40
Appendix 13 Investment from Singapore, 1987-2017.....	41
Appendix 14 Investment from Korea, 1987-2017.....	42
Appendix 15 Investment from United States, 1987-2017.....	43
Appendix 16 Investment from European Union, 1987-2017.....	44
Appendix 17 Investment from ASEAN, 1987-2017.....	45
Appendix 18 Investment from BRICS, 2010-2017.....	46
Appendix 19 Investment from Countries along the Belt and Road, 1987-2017.....	46
Appendix 20 Reference Data on FDI Distribution in Major Sectors in 2017.....	47
Appendix 21 Investment in China by Top 5 FDI Outflow Countries/Regions, EU and ASEAN in 2017..	49
Appendix 22 FDI Flows of Countries Along the Belt and Road in 2017.....	50

Contents

1. Summary of Foreign Direct Investment (FDI) in 2017.....	1
2. Performance of Foreign Investment Economy.....	3
2.1. Value-added of Foreign Invested Industrial Enterprises above Designed Size.....	3
2.2. Realized FDI as a Percentage of Total Investment in Fixed Assets.....	3
2.3. Tax Revenue of FIEs	4
2.4. Import and Export.....	5
3. Distribution of Foreign Investment Sources.....	6
3.1. Top 15 Investors of China.....	6
3.2. Major Foreign Investors of China.....	7
3.3. Investment from Hong Kong, China	8
3.4. Investment from Taiwan Province of China	9
3.5. Investment from Japan.....	10
3.6. Investment from Singapore.....	11
3.7. Investment from South Korea.....	12
3.8. Investment from the United States.....	13
3.9. Investment from European Union	14
3.10. Investment from ASEAN.....	15
3.11. Investment from BRICS	16
3.12. Investment from Countries along the Belt and Road.....	17
4. Distribution of Foreign Investment Sources.....	19
4.1. Forms of Foreign Investment.....	19
4.2. Industries of Foreign Investment.....	19
4.3. Investment of East, Central and West parts of China	21
5. Global Foreign Direct Investment.....	22
5.1. Global FDI Flows.....	22

STATISTICAL BULLETIN OF FDI IN CHINA 2018



INvest in China

MINISTRY OF COMMERCE OF THE PEOPLE'S REPUBLIC OF CHINA

中华人民共和国商务部